

Pan DiMethyl-lysine Antibody

CAB5870

Description

This Pan DiMethyl-lysine Antibody is supplied as a kit for advanced applications. The kit includes Bradford Reagent to quantify total protein concentration for accurate sample normalization (Optional).

Product Information

SKU:	CAB5870
Contents:	20 μ L, 100 μ L Bradford Reagent: 1 vial (2ml)
Category:	Polyclonal Antibody
Synonyms:	-
Clone:	-
Applications:	WB IHC-P IF/ICC ELISA
Conjugation:	Unconjugated
Reactivity:	Human, Mouse, Rat, Other (Wide Range Predicted)

Antibody Data

Gene ID:	-
Uniprot:	AB_2766619
Host Species:	Rabbit
Purification:	Affinity purification
Observed MW:	15-60kDa
Calculated MW:	-

Preparation & Storage

Storage: Store at -20°C. Avoid freeze / thaw cycles. Buffer: PBS containing 50% glycerol, preserved with proclin300 or sodium azide (as specified on the Certificate of Analysis), pH 7.3.

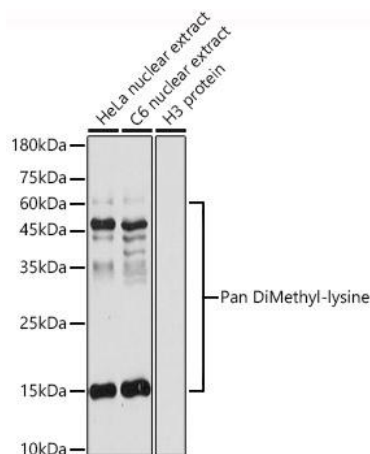
Store Bradford Reagent at Room Temperature for 1 Year.

Positive Sample: HeLa acid extract, C6 acid extract, H3 protein

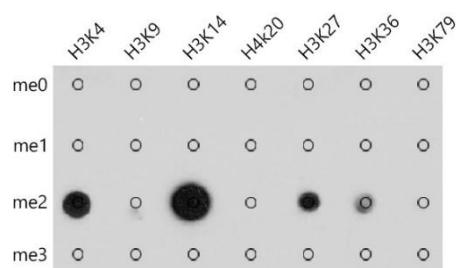
Recommended Dilutions:	WB	1:500 - 1:1000
	IHC-P	1:50 - 1:100
	IF/ICC	1:50 - 1:100
	ELISA	Recommended starting concentration is 1 µg/mL. Please optimize the concentration based on your specific assay requirements.

Protein Quantification (Optional): To quantify total protein levels, use the Bradford Reagent included in this kit. Visit <https://www.assaygenie.com/bradford-protein-assay-protocol/> to view the full protocol

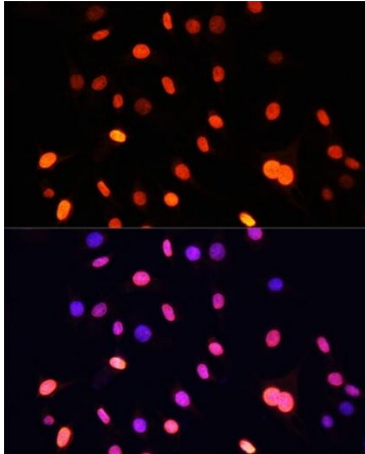
Validation Data



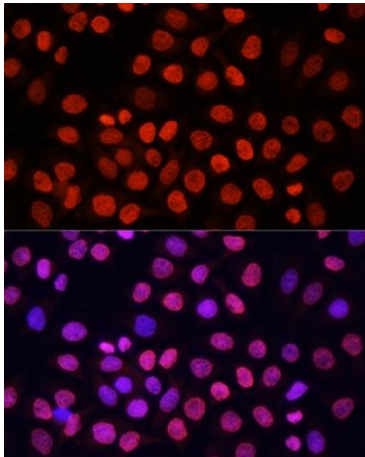
Western blot analysis of various lysates using Pan DiMethyl-lysine Rabbit pAb (CAB5870) at 1:500 dilution. Secondary antibody: HRP-conjugated Goat anti-Rabbit IgG (H+L) (CABS014) at 1:10000 dilution. Lysates/proteins: 25µg per lane. Blocking buffer: 3% nonfat dry milk in TBST. Detection: ECL Basic Kit (AbGn00020). Exposure time: 10s.



Dot-blot analysis of all sorts of methylation peptides using Pan DiMethyl-lysine antibody (CAB5870) at 1:1000 dilution.



Immunofluorescence analysis of cells using Pan DiMethyl-lysine Rabbit pAb (CAB5870) at dilution of 1:100. Secondary antibody: Cy3-conjugated Goat anti-Rabbit IgG (H+L) (CABS007) at 1:500 dilution. Blue: DAPI for nuclear staining.



Immunofluorescence analysis of HeLa cells using Pan DiMethyl-lysine Rabbit pAb (CAB5870) at dilution of 1:100. Secondary antibody: Cy3-conjugated Goat anti-Rabbit IgG (H+L) (CABS007) at 1:500 dilution. Blue: DAPI for nuclear staining.