

[KO Validated] SMARCC1/BAF155 Antibody

CAB6128

Description

This [KO Validated] SMARCC1/BAF155 Antibody is supplied as a kit for advanced applications. The kit includes Bradford Reagent to quantify total protein concentration for accurate sample normalization (Optional).

Product Information

SKU:	CAB6128
Contents:	20 µL, 100 µL Bradford Reagent: 1 vial (2ml)
Category:	Polyclonal Antibody
Synonyms:	HYC5, Rsc8, SRG3, SWI3, BAF155, CRACC1, 55
Clone:	-
Applications:	WB IP ELISA
Conjugation:	Unconjugated
Reactivity:	Human

Antibody Data

Gene ID:	6599
Uniprot:	AB_2863524
Host Species:	Rabbit
Purification:	Affinity purification
Observed MW:	155kDa
Calculated MW:	123kDa

Preparation & Storage

Storage: Store at -20°C. Avoid freeze / thaw cycles. Buffer: PBS containing 50% glycerol, preserved with proclin300 or sodium azide (as specified on the Certificate of Analysis), pH 7.3.

Store Bradford Reagent at Room Temperature for 1 Year.

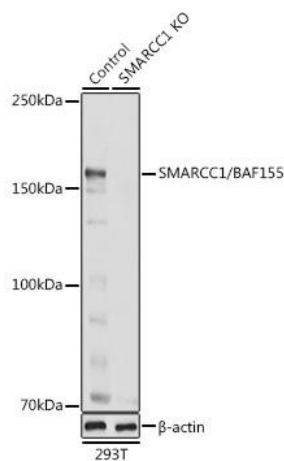
Positive Sample: 293T

Recommended Dilutions:

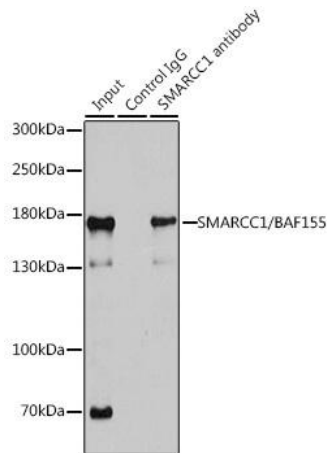
WB	1:500 - 1:1000
IP	0.5µg-4µg antibody for 200µg-400µg extracts of whole cells
ELISA	Recommended starting concentration is 1 µg/mL. Please optimize the concentration based on your specific assay requirements.

Protein Quantification (Optional): To quantify total protein levels, use the Bradford Reagent included in this kit. Visit <https://www.assaygenie.com/bradford-protein-assay-protocol/> to view the full protocol

Validation Data



Western blot analysis of lysates from wild type (WT) and SMARCC1/ knockout (KO) 293T cells, using [KO Validated] SMARCC1/ Rabbit pAb (CAB6128) at 1:1000 dilution. Secondary antibody: HRP-conjugated Goat anti-Rabbit IgG (H+L) (CABS014) at 1:10000 dilution. Lysates/proteins: 25µg per lane. Blocking buffer: 3% nonfat dry milk in TBST. Detection: ECL Basic Kit (AbGn00020). Exposure time: 1s.



Immunoprecipitation analysis of 200 µg extracts of 293T cells using 1 µg SMARCC1/ antibody (CAB6128). Western blot was performed from the immunoprecipitate using SMARCC1/ antibody (CAB6128) at a dilution of 1:1000.