

Synaptophysin Antibody

CAB6344

Description

This Synaptophysin Antibody is supplied as a kit for advanced applications. The kit includes Bradford Reagent to quantify total protein concentration for accurate sample normalization (Optional).

Product Information

SKU:	CAB6344
Contents:	20 µL, 100 µL Bradford Reagent: 1 vial (2ml)
Category:	Polyclonal Antibody
Synonyms:	MRX96, MRXSYP, XLID96, Synaptophysin
Clone:	-
Applications:	WB IHC-P IF/ICC IP ELISA IF-P
Conjugation:	Unconjugated
Reactivity:	Human, Mouse, Rat

Antibody Data

Gene ID:	6855
Uniprot:	AB_2766946
Host Species:	Rabbit
Purification:	Affinity purification
Observed MW:	38kDa
Calculated MW:	34kDa

Preparation & Storage

Storage: Store at -20°C. Avoid freeze / thaw cycles. Buffer: PBS with 0.09% Sodium azide, 50% glycerol, pH 7.3.

Store Bradford Reagent at Room Temperature for 1 Year.

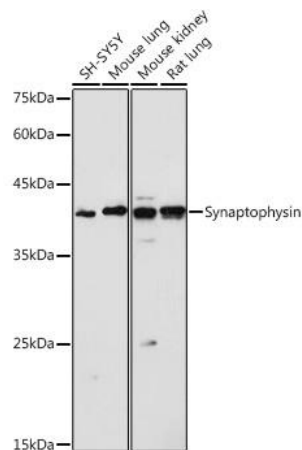
Positive Sample: SH-SY5Y, Mouse lung, Mouse kidney, Rat lung

Recommended Dilutions:

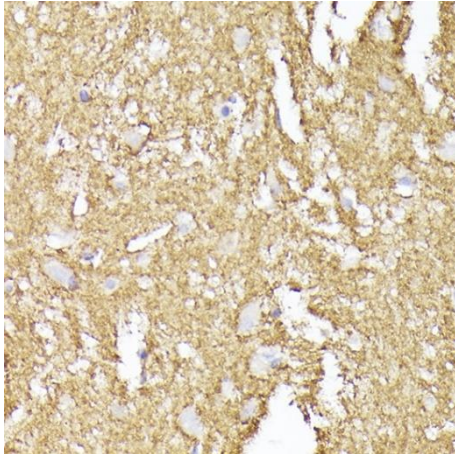
WB	1:500 - 1:1000
IP	0.5µg-4µg antibody for 400µg-600µg extracts of whole cells
IF/ICC	1:50 - 1:200
IF-P	1:50 - 1:200
IHC-P	1:50 - 1:200
ELISA	Recommended starting concentration is 1 µg/mL. Please optimize the concentration based on your specific assay requirements.

Protein Quantification (Optional): To quantify total protein levels, use the Bradford Reagent included in this kit. Visit <https://www.assaygenie.com/bradford-protein-assay-protocol/> to view the full protocol

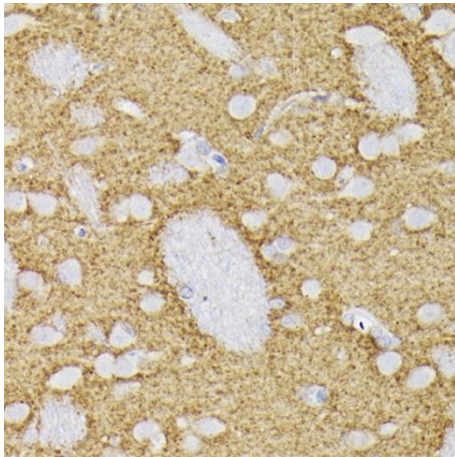
Validation Data



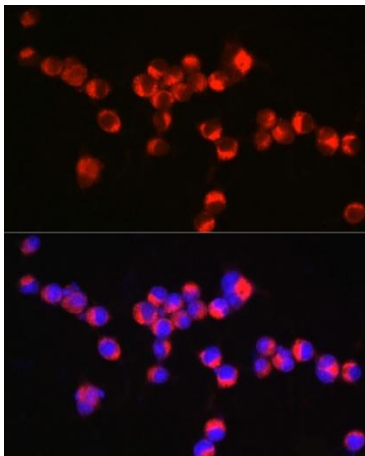
Western blot analysis of various lysates using Synaptophysin Rabbit pAb (CAB6344) at 1:1000 dilution. Secondary antibody: HRP-conjugated Goat anti-Rabbit IgG (H+L) (CABS014) at 1:10000 dilution. Lysates/proteins: 25µg per lane. Blocking buffer: 3% nonfat dry milk in TBST. Detection: ECL Basic Kit (AbGn00020). Exposure time: 1s.



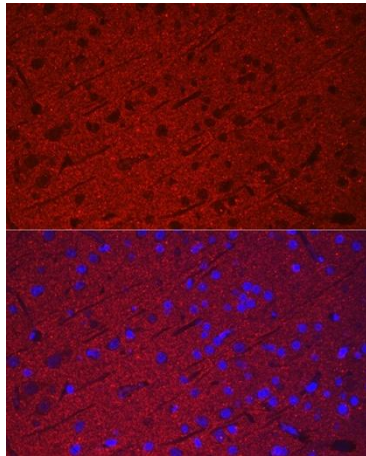
Immunohistochemistry analysis of paraffin-embedded Human brain using Synaptophysin Rabbit pAb (CAB6344) at dilution of 1:200 (40x lens). High pressure antigen retrieval performed with 0.01M Citrate buffer (pH 6.0) prior to IHC staining.



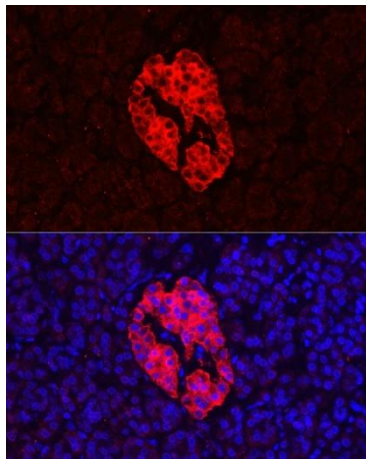
Immunohistochemistry analysis of paraffin-embedded Rat brain using Synaptophysin Rabbit pAb (CAB6344) at dilution of 1:200 (40x lens). High pressure antigen retrieval performed with 0.01M Citrate buffer (pH 6.0) prior to IHC staining.



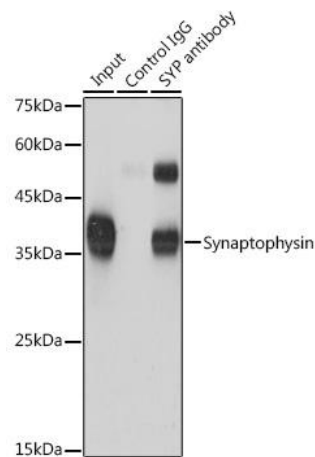
Immunofluorescence analysis of Neuro-2a cells using Synaptophysin Rabbit pAb (CAB6344) at dilution of 1:100 (40x lens). Secondary antibody: Cy3-conjugated Goat anti-Rabbit IgG (H+L) (CABS007) at 1:500 dilution. Blue: DAPI for nuclear staining.



Immunofluorescence analysis of paraffin-embedded rat brain using Synaptophysin Rabbit pAb (CAB6344) at dilution of 1:100 (40x lens). Secondary antibody: Cy3-conjugated Goat anti-Rabbit IgG (H+L) (CABS007) at 1:500 dilution. Blue: DAPI for nuclear staining.



Immunofluorescence analysis of paraffin-embedded human pancreas using Synaptophysin Rabbit pAb (CAB6344) at dilution of 1:100 (40x lens). Secondary antibody: Cy3-conjugated Goat anti-Rabbit IgG (H+L) (CABS007) at 1:500 dilution. Blue: DAPI for nuclear staining.



Immunoprecipitation analysis of 600 μ g extracts of Mouse brain cells using 3 μ g Synaptophysin antibody (CAB6344). Western blot was performed from the immunoprecipitate using Synaptophysin antibody (CAB6344) at a dilution of 1:1000.