

PSG1 Antibody

CAB6399

Description

This PSG1 Antibody is supplied as a kit for advanced applications. The kit includes Bradford Reagent to quantify total protein concentration for accurate sample normalization (Optional).

Product Information

SKU:	CAB6399
Contents:	20 µL, 100 µL Bradford Reagent: 1 vial (2ml)
Category:	Polyclonal Antibody
Synonyms:	SP1, B1G1, PBG1, CD66f, PSBG1, PSG95, PSGGA, DHFRP2, PSBG-1, PSGIIA, FL-NCA-1/2, PS-beta-C/D, PS-beta-G-1, PSG1
Clone:	-
Applications:	WB IHC-P ELISA IF-P
Conjugation:	Unconjugated
Reactivity:	Human

Antibody Data

Gene ID:	5669
Uniprot:	AB_2767001
Host Species:	Rabbit
Purification:	Affinity purification
Observed MW:	55-72kDa
Calculated MW:	47kDa

Preparation & Storage

Storage: Store at -20°C. Avoid freeze / thaw cycles. Buffer: PBS containing 50% glycerol, preserved with proclin300 or sodium azide (as specified on the Certificate of Analysis), pH 7.3.

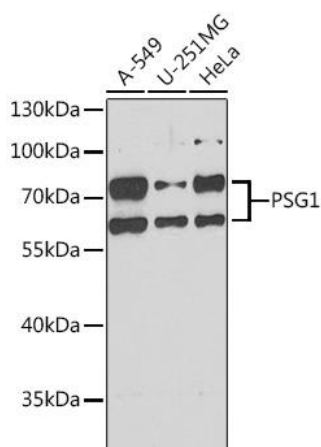
Store Bradford Reagent at Room Temperature for 1 Year.

Positive Sample: A-549, U-251MG, HeLa

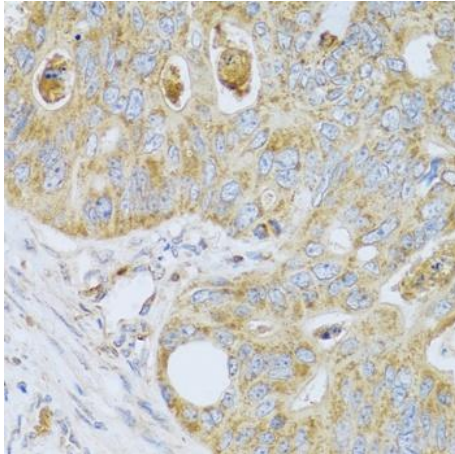
Recommended Dilutions:	WB	1:500 - 1:2000
	IF-P	1:50 - 1:200
	IHC-P	1:50 - 1:100
	ELISA	Recommended starting concentration is 1 µg/mL. Please optimize the concentration based on your specific assay requirements.

Protein Quantification (Optional): To quantify total protein levels, use the Bradford Reagent included in this kit. Visit <https://www.assaygenie.com/bradford-protein-assay-protocol/> to view the full protocol

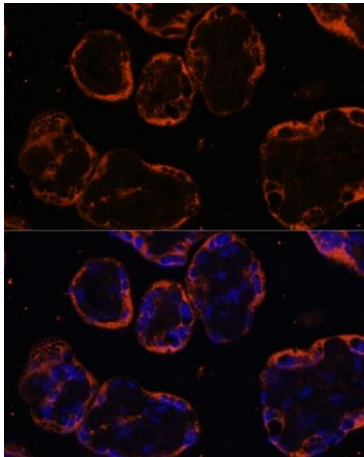
Validation Data



Western blot analysis of various lysates using Rabbit pAb (CAB6399) at 1:1000 dilution. Secondary antibody: HRP-conjugated Goat anti-Rabbit IgG (H+L) (CABS014) at 1:10000 dilution. Lysates/proteins: 25µg per lane. Blocking buffer: 3% nonfat dry milk in TBST. Detection: ECL Basic Kit (AbGn00020). Exposure time: 90s.



Immunohistochemistry analysis of paraffin-embedded Human colon carcinoma using Rabbit pAb (CAB6399) at dilution of 1:100 (40x lens). Microwave antigen retrieval performed with 0.01M PBS Buffer (pH 7.2) prior to IHC staining.



Immunofluorescence analysis of paraffin-embedded human placenta using Rabbit pAb (CAB6399) at dilution of 1:100. Secondary antibody: Cy3-conjugated Goat anti-Rabbit IgG (H+L) (CABS007) at 1:500 dilution. Blue: DAPI for nuclear staining.