

CD1B Antibody

CAB6551

Description

This CD1B Antibody is supplied as a kit for advanced applications. The kit includes Bradford Reagent to quantify total protein concentration for accurate sample normalization (Optional).

Product Information

| | |
|----------------------|---|
| SKU: | CAB6551 |
| Contents: | 20 μ L, 100 μ L Bradford Reagent: 1 vial (2ml) |
| Category: | |
| Synonyms: | - |
| Clone: | - |
| Applications: | [App] |
| Conjugation: | - |
| Reactivity: | - |

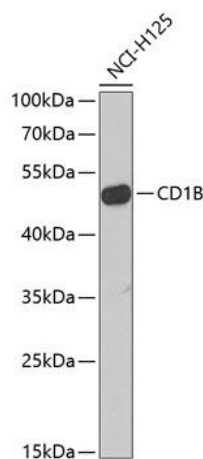
Antibody Data

| | |
|-----------------------|---|
| Gene ID: | - |
| Uniprot: | - |
| Host Species: | |
| Purification: | - |
| Observed MW: | - |
| Calculated MW: | - |

Preparation & Storage

| | |
|---|--|
| Storage: | - Store Bradford Reagent at Room Temperature for 1 Year. |
| Positive Sample: | - |
| Recommended Dilutions: | N/A |
| Protein Quantification (Optional): | To quantify total protein levels, use the Bradford Reagent included in this kit. Visit https://www.assaygenie.com/bradford-protein-assay-protocol/ to view the full protocol |

Validation Data



Western blot analysis of lysates from NCI- cells, using CD1B Rabbit pAb (CAB6551) at 1:1000 dilution. Secondary antibody: HRP-conjugated Goat anti-Rabbit IgG (H+L) (CABS014) at 1:10000 dilution. Lysates/proteins: 25µg per lane. Blocking buffer: 3% nonfat dry milk in TBST. Detection: ECL Basic Kit (AbGn00020). Exposure time: 90s.