

CMPK1 Antibody

CAB6561

Description

This CMPK1 Antibody is supplied as a kit for advanced applications. The kit includes Bradford Reagent to quantify total protein concentration for accurate sample normalization (Optional).

Product Information

SKU:	CAB6561
Contents:	20 μ L, 100 μ L Bradford Reagent: 1 vial (2ml)
Category:	
Synonyms:	-
Clone:	-
Applications:	[App]
Conjugation:	-
Reactivity:	-

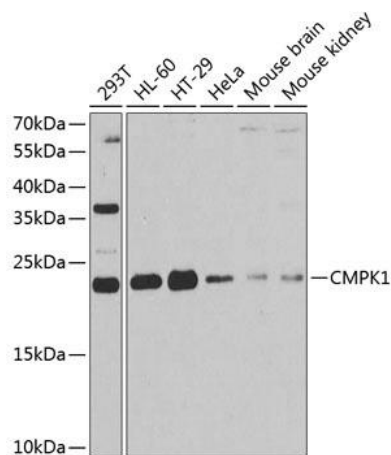
Antibody Data

Gene ID:	-
Uniprot:	-
Host Species:	
Purification:	-
Observed MW:	-
Calculated MW:	-

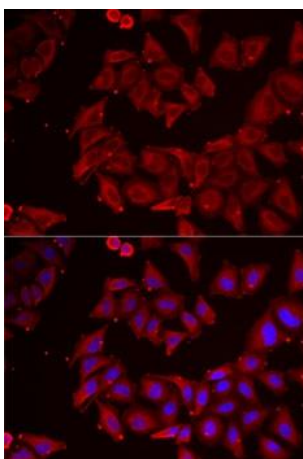
Preparation & Storage

Storage:	- Store Bradford Reagent at Room Temperature for 1 Year.
Positive Sample:	-
Recommended Dilutions:	N/A
Protein Quantification (Optional):	To quantify total protein levels, use the Bradford Reagent included in this kit. Visit https://www.assaygenie.com/bradford-protein-assay-protocol/ to view the full protocol

Validation Data



Western blot analysis of various lysates using CMPK1 Rabbit pAb (CAB6561) at 1:1000 dilution. Secondary antibody: HRP-conjugated Goat anti-Rabbit IgG (H+L) (CABS014) at 1:10000 dilution. Lysates/proteins: 25µg per lane. Blocking buffer: 3% nonfat dry milk in TBST. Detection: ECL Basic Kit (AbGn00020). Exposure time: 90s.



Immunofluorescence analysis of cells using CMPK1 Rabbit pAb (CAB6561). Secondary antibody: Cy3-conjugated Goat anti-Rabbit IgG (H+L) (CABS007) at 1:500 dilution. Blue: DAPI for nuclear staining.