

## HSPA2 Monoclonal Antibody

CAB6652

### Description

---

This HSPA2 Monoclonal Antibody is supplied as a kit for advanced applications. The kit includes Bradford Reagent to quantify total protein concentration for accurate sample normalization (Optional).

### Product Information

---

|                      |  |
|----------------------|--|
| <b>SKU:</b>          | CAB6652  |
| <b>Contents:</b>     | 20 $\mu$ L, 100 $\mu$ L<br>Bradford Reagent: 1 vial (2ml)                |
| <b>Category:</b>     | Monoclonal Antibody  |
| <b>Synonyms:</b>     | HSP70-2, HSP70-3, HSPA2  |
| <b>Clone:</b>        | ARC1415  |
| <b>Applications:</b> | <span>WB</span> <span>IF/ICC</span> <span>ELISA</span> <span>IF-P</span> |
| <b>Conjugation:</b>  | Unconjugated   |
| <b>Reactivity:</b>   | Human, Mouse, Rat  |

### Antibody Data

---

|                       |                       |
|-----------------------|-----------------------|
| <b>Gene ID:</b>       | 3306                  |
| <b>Uniprot:</b>       | AB_2863532            |
| <b>Host Species:</b>  | Rabbit                |
| <b>Purification:</b>  | Affinity purification |
| <b>Observed MW:</b>   | 70kDa                 |
| <b>Calculated MW:</b> | 70kDa                 |

## Preparation & Storage

**Storage:** Store at -20°C. Avoid freeze / thaw cycles. Buffer: PBS containing 50% glycerol and 0.05% BSA, preserved with proclin300 or sodium azide (as specified on the Certificate of Analysis), pH 7.3.

Store Bradford Reagent at Room Temperature for 1 Year.

**Positive Sample:** Mouse lung, Mouse brain, A-431, Rat brain

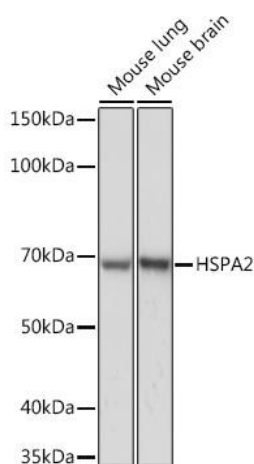
**Recommended Dilutions:**

|               |   |
|---------------|---|
| <b>WB</b>     | 1:500 - 1:2000  |
| <b>IF/ICC</b> | 1:50 - 1:200  |
| <b>IF-P</b>   | 1:50 - 1:200  |
| <b>ELISA</b>  | Recommended starting concentration is 1 µg/mL. Please optimize the concentration based on your specific assay requirements. |

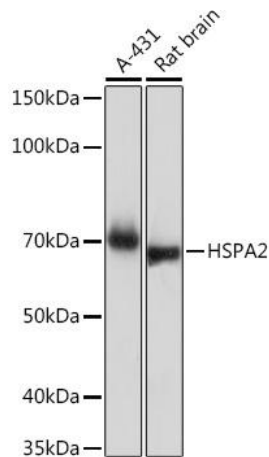
**Protein Quantification (Optional):**

To quantify total protein levels, use the Bradford Reagent included in this kit. Visit <https://www.assaygenie.com/bradford-protein-assay-protocol/> to view the full protocol

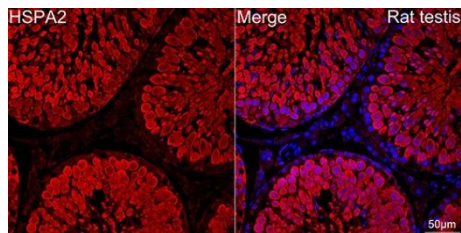
## Validation Data



Western blot analysis of various lysates using HSPA2 Rabbit mAb (CAB6652) at 1:1000 dilution. Secondary antibody: HRP-conjugated Goat anti-Rabbit IgG (H+L) (CABS014) at 1:10000 dilution. Lysates/proteins: 25µg per lane. Blocking buffer: 3% nonfat dry milk in TBST. Detection: ECL Basic Kit (AbGn00020). Exposure time: 1s.



Western blot analysis of various lysates using HSPA2 Rabbit mAb (CAB6652) at 1:1000 dilution. Secondary antibody: HRP-conjugated Goat anti-Rabbit IgG (H+L) (CABS014) at 1:10000 dilution. Lysates/proteins: 25µg per lane. Blocking buffer: 3% nonfat dry milk in TBST. Detection: ECL Basic Kit (AbGn00020). Exposure time: 30s.



Confocal imaging of paraffin-embedded Rat testis tissue using HSPA2 Rabbit mAb (CAB6652, dilution 1:100) followed by a further incubation with Cy3 Goat Anti-Rabbit IgG (H+L) (CABS007, dilution 1:500) (Red). DAPI was used for nuclear staining (Blue). Objective: 40x. Perform high pressure antigen retrieval with 0.01 M citrate buffer (pH 6.0) prior to IF staining.