

## TEAD1 Antibody

CAB6768

### Description

---

This TEAD1 Antibody is supplied as a kit for advanced applications. The kit includes Bradford Reagent to quantify total protein concentration for accurate sample normalization (Optional).

### Product Information

---

|                      |   |
|----------------------|---|
| <b>SKU:</b>          | CAB6768   |
| <b>Contents:</b>     | 20 $\mu$ L, 100 $\mu$ L<br>Bradford Reagent: 1 vial (2ml) |
| <b>Category:</b>     | Polyclonal Antibody                                       |
| <b>Synonyms:</b>     | AA, REF1, TCF13, TEF-1, NTEF-1, TCF-13, TEAD-1, TEAD1     |
| <b>Clone:</b>        | -   |
| <b>Applications:</b> | WB IHC-P IF/ICC IP ChIP ELISA                             |
| <b>Conjugation:</b>  | Unconjugated  |
| <b>Reactivity:</b>   | Human, Mouse, Rat   |

### Antibody Data

---

|                       |                       |
|-----------------------|-----------------------|
| <b>Gene ID:</b>       | 7003                  |
| <b>Uniprot:</b>       | AB_2767351            |
| <b>Host Species:</b>  | Rabbit                |
| <b>Purification:</b>  | Affinity purification |
| <b>Observed MW:</b>   | 60kDa/50kDa           |
| <b>Calculated MW:</b> | 48kDa                 |

## Preparation & Storage

**Storage:** Store at -20°C. Avoid freeze / thaw cycles. Buffer: PBS containing 50% glycerol, preserved with proclin300 or sodium azide (as specified on the Certificate of Analysis), pH 7.3.

Store Bradford Reagent at Room Temperature for 1 Year.

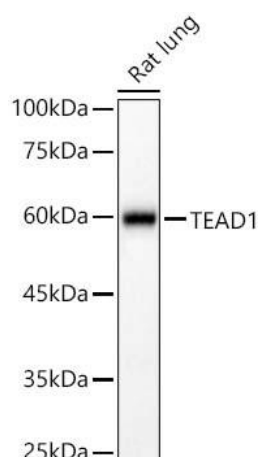
**Positive Sample:** Rat lung, Mouse lung, Mouse heart

**Recommended Dilutions:**

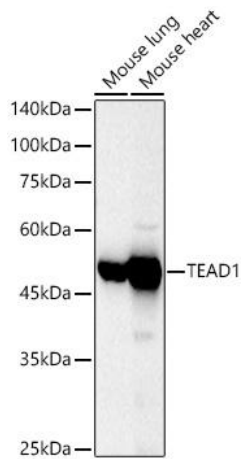
|               |  |
|---------------|--|
| <b>WB</b>     | 1:1000 - 1:5000  |
| <b>IHC-P</b>  | 1:50 - 1:200   |
| <b>IF/ICC</b> | 1:50 - 1:200   |
| <b>IP</b>     | 0.5µg-4µg antibody for 400µg-600µg extracts of whole cells   |
| <b>ELISA</b>  | Recommended starting concentration is 1 µg/mL. Please optimize the concentration based on your specific assay requirements. ChIP 5µg antibody for 10µg-15µg of Chromatin |

**Protein Quantification (Optional):** To quantify total protein levels, use the Bradford Reagent included in this kit. Visit <https://www.assaygenie.com/bradford-protein-assay-protocol/> to view the full protocol

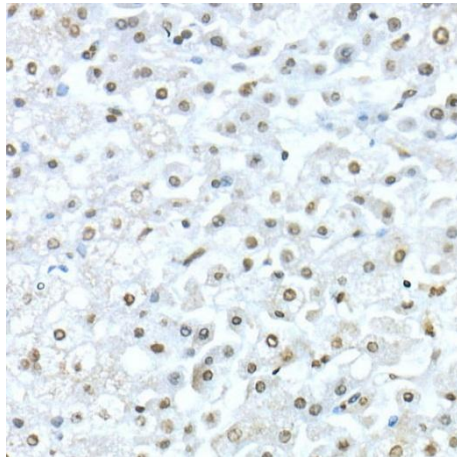
## Validation Data



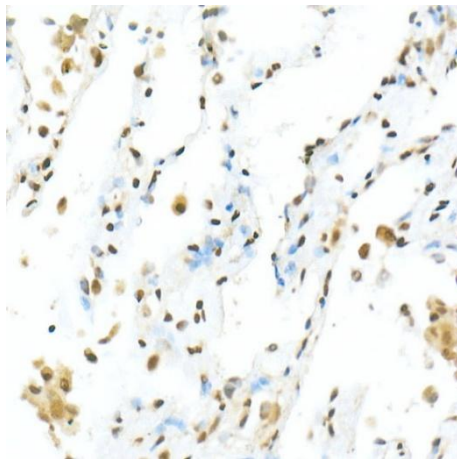
Western blot analysis of lysates from Rat lung using TEAD1 Rabbit pAb (CAB6768) at 1:2000 dilution. Secondary antibody: HRP-conjugated Goat anti-Rabbit IgG (H+L) (CABS014) at 1:10000 dilution. Lysates/proteins: 25 µg per lane. Blocking buffer: 3% nonfat dry milk in TBST. Detection: ECL Basic Kit (AbGn00020). Exposure time: 90s.



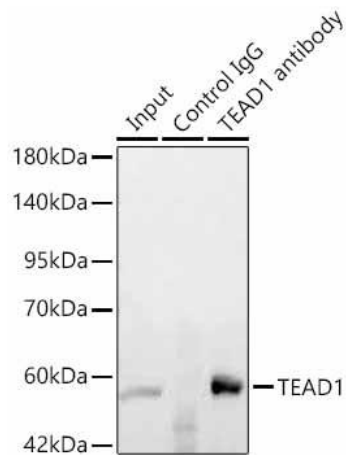
Immunohistochemistry analysis of paraffin-embedded Human liver using TEAD1 Rabbit pAb (CAB6768) at dilution of 1:50 (40x lens). High pressure antigen retrieval performed with 0.01M Citrate buffer (pH 6.0) prior to IHC staining.



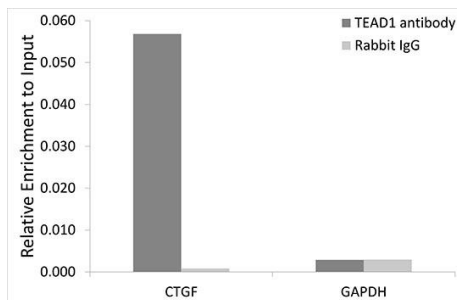
Immunohistochemistry analysis of paraffin-embedded Human liver using TEAD1 Rabbit pAb (CAB6768) at dilution of 1:50 (40x lens). High pressure antigen retrieval performed with 0.01M Citrate buffer (pH 6.0) prior to IHC staining.



Immunohistochemistry analysis of paraffin-embedded Human lung using TEAD1 Rabbit pAb (CAB6768) at dilution of 1:50 (40x lens). High pressure antigen retrieval performed with 0.01M Citrate buffer (pH 6.0) prior to IHC staining.



Immunoprecipitation of TEAD1 in 600 µg extracts from mouse heart using 3 µg TEAD1 Rabbit pAb (CAB6768). Western blot analysis was performed using TEAD1 Rabbit pAb (CAB6768) at 1:200 dilution.



Chromatin immunoprecipitation analysis of extracts of HeLa cells, using TEAD1 antibody (CAB6768) and rabbit IgG. The amount of immunoprecipitated DNA was checked by quantitative PCR. Histogram was constructed by the ratios of the immunoprecipitated DNA to the input.