

## Exportin 5 (XPO5) Antibody

CAB6790

### Description

---

This Exportin 5 (XPO5) Antibody is supplied as a kit for advanced applications. The kit includes Bradford Reagent to quantify total protein concentration for accurate sample normalization (Optional).

### Product Information

---

|                      |   |
|----------------------|---|
| <b>SKU:</b>          | CAB6790   |
| <b>Contents:</b>     | 20 µL, 100 µL<br>Bradford Reagent: 1 vial (2ml) |
| <b>Category:</b>     | Polyclonal Antibody                             |
| <b>Synonyms:</b>     | exp5, Exportin 5 (XPO5)                         |
| <b>Clone:</b>        | -   |
| <b>Applications:</b> | WB IF/ICC IP ELISA                              |
| <b>Conjugation:</b>  | Unconjugated                                    |
| <b>Reactivity:</b>   | Human, Mouse, Rat                               |

### Antibody Data

---

|                       |                       |
|-----------------------|-----------------------|
| <b>Gene ID:</b>       | 57510                 |
| <b>Uniprot:</b>       | AB_2767373            |
| <b>Host Species:</b>  | Rabbit                |
| <b>Purification:</b>  | Affinity purification |
| <b>Observed MW:</b>   | 136kDa                |
| <b>Calculated MW:</b> | 136kDa                |

## Preparation & Storage

**Storage:** Store at -20°C. Avoid freeze / thaw cycles. Buffer: PBS containing 50% glycerol, preserved with proclin300 or sodium azide (as specified on the Certificate of Analysis), pH 7.3.

Store Bradford Reagent at Room Temperature for 1 Year.

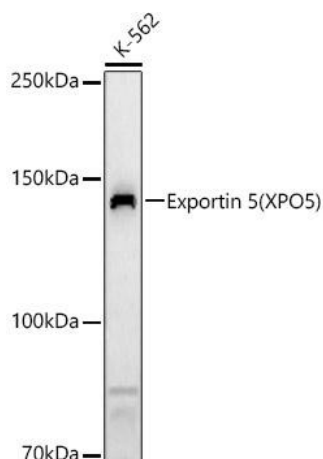
**Positive Sample:** K-562

**Recommended Dilutions:**

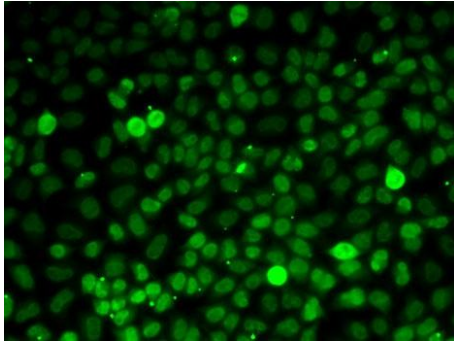
|               |   |
|---------------|---|
| <b>WB</b>     | 1:2000 - 1:10000  |
| <b>IF/ICC</b> | 1:100 - 1:500   |
| <b>IP</b>     | 0.5µg-4µg antibody for 200µg-400µg extracts of whole cells  |
| <b>ELISA</b>  | Recommended starting concentration is 1 µg/mL. Please optimize the concentration based on your specific assay requirements. |

**Protein Quantification (Optional):** To quantify total protein levels, use the Bradford Reagent included in this kit. Visit <https://www.assaygenie.com/bradford-protein-assay-protocol/> to view the full protocol

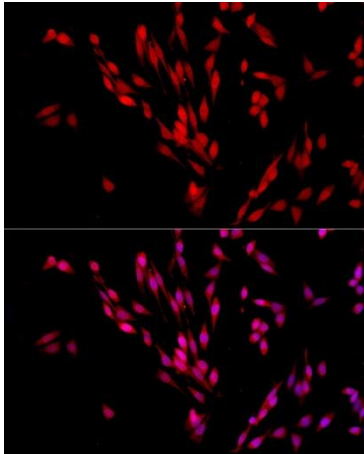
## Validation Data



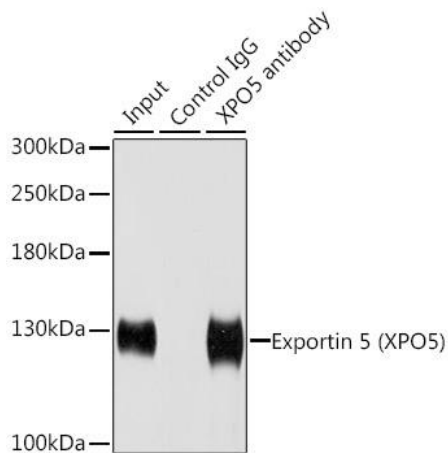
Western blot analysis of various lysates, using Exportin 5 Rabbit pAb (CAB6790) at 1:10000 dilution. Secondary antibody: HRP-conjugated Goat anti-Rabbit IgG (H+L) (CABS014) at 1:10000 dilution. Lysates/proteins: 25µg per lane. Blocking buffer: 3% nonfat dry milk in TBST. Detection: ECL Basic Kit (AbGn00020). Exposure time: 90s.



Immunofluorescence analysis of cells using Exportin 5 Rabbit pAb (CAB6790). Secondary antibody: Cy3-conjugated Goat anti-Rabbit IgG (H+L) (CABS007) at 1:500 dilution.



Immunofluorescence analysis of PC-12 cells using Exportin 5 Rabbit pAb (CAB6790) at dilution of 1:500 (40x lens). Secondary antibody: Cy3-conjugated Goat anti-Rabbit IgG (H+L) (CABS007) at 1:500 dilution. Blue: DAPI for nuclear staining.



Immunoprecipitation analysis of 200  $\mu$ g extracts of HeLa cells using 1  $\mu$ g Exportin 5 (Exportin 5) antibody (CAB6790). Western blot was performed from the immunoprecipitate using Exportin 5 (Exportin 5) antibody (CAB6790) at a dilution of 1:1000.