

DCP1A Monoclonal Antibody

CAB6824

Description

This DCP1A Monoclonal Antibody is supplied as a kit for advanced applications. The kit includes Bradford Reagent to quantify total protein concentration for accurate sample normalization (Optional).

Product Information

SKU:	CAB6824
Contents:	20 µL, 100 µL Bradford Reagent: 1 vial (2ml)
Category:	Monoclonal Antibody
Synonyms:	SMIF, SMAD4IP1, HSA275986, Nbla00360, DCP1A
Clone:	ARC1421
Applications:	WB IHC-P IF/ICC ELISA
Conjugation:	Unconjugated
Reactivity:	Human, Mouse

Antibody Data

Gene ID:	55802
Uniprot:	AB_2863539
Host Species:	Rabbit
Purification:	Affinity purification
Observed MW:	73kDa
Calculated MW:	63kDa

Preparation & Storage

Storage: Store at -20°C. Avoid freeze / thaw cycles. Buffer: PBS containing 50% glycerol and 0.05% BSA, preserved with proclin300 or sodium azide (as specified on the Certificate of Analysis), pH 7.3.

Store Bradford Reagent at Room Temperature for 1 Year.

Positive Sample: HeLa, 293T, HepG2, SH-SY5Y

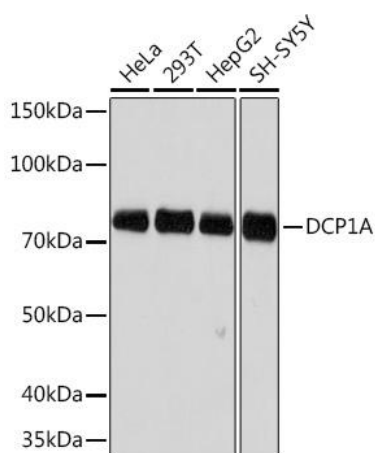
Recommended Dilutions:

WB	1:500 - 1:2000
IHC-P	1:100 - 1:1000
IF/ICC	1:50 - 1:200
ELISA	Recommended starting concentration is 1 µg/mL. Please optimize the concentration based on your specific assay requirements.

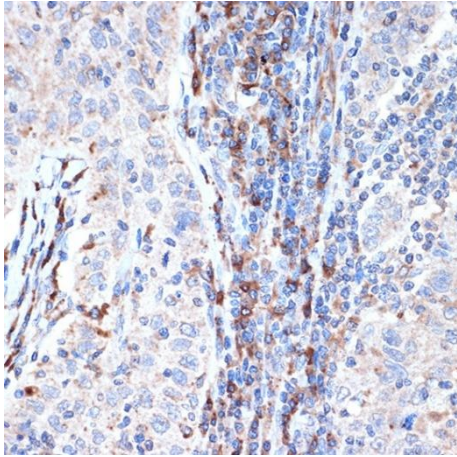
Protein Quantification (Optional):

To quantify total protein levels, use the Bradford Reagent included in this kit. Visit <https://www.assaygenie.com/bradford-protein-assay-protocol/> to view the full protocol

Validation Data



Western blot analysis of various lysates using DCP1A Rabbit mAb (CAB6824) at 1:500 dilution. Secondary antibody: HRP-conjugated Goat anti-Rabbit IgG (H+L) (CABS014) at 1:10000 dilution. Lysates/proteins: 25µg per lane. Blocking buffer: 3% nonfat dry milk in TBST. Detection: ECL Basic Kit (AbGn00020). Exposure time: 3min.



Immunohistochemistry analysis of paraffin-embedded Human esophageal cancer using DCP1A Rabbit mAb (CAB6824) at dilution of 1:100 (40x lens). Microwave antigen retrieval performed with 0.01M Tris/EDTA Buffer (pH 9.0) prior to IHC staining.