

FKBP38/FKBP8 Antibody

CAB7085

Description

This FKBP38/FKBP8 Antibody is supplied as a kit for advanced applications. The kit includes Bradford Reagent to quantify total protein concentration for accurate sample normalization (Optional).

Product Information

SKU:	CAB7085
Contents:	20 µL, 100 µL Bradford Reagent: 1 vial (2ml)
Category:	Polyclonal Antibody
Synonyms:	FKBP38, FKBP38, FKBP38/FKBP8
Clone:	-
Applications:	WB IF/ICC IP ELISA
Conjugation:	Unconjugated
Reactivity:	Human, Mouse, Rat

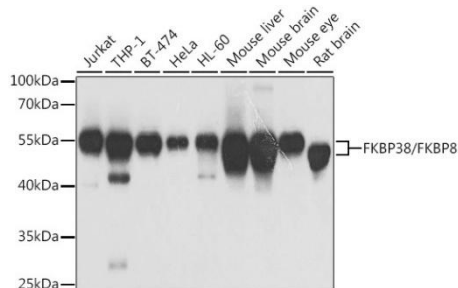
Antibody Data

Gene ID:	23770
Uniprot:	AB_2767640
Host Species:	Rabbit
Purification:	Affinity purification
Observed MW:	55kDa
Calculated MW:	45kDa

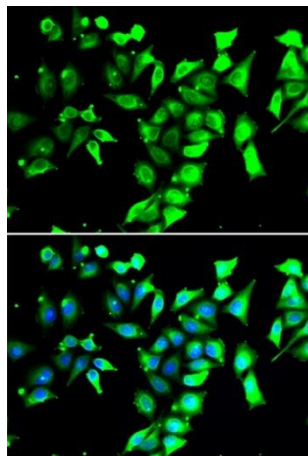
Preparation & Storage

Storage:	Store at -20°C. Avoid freeze / thaw cycles. Buffer: PBS containing 50% glycerol, preserved with proclin300 or sodium azide (as specified on the Certificate of Analysis), pH 7.3. Store Bradford Reagent at Room Temperature for 1 Year.								
Positive Sample:	Jurkat, THP-1, BT-474, HeLa, HL-60, Mouse liver, Mouse brain, Mouse eye, Rat brain								
Recommended Dilutions:	<table border="1"> <tr> <td>WB</td><td>1:500 - 1:2000</td></tr> <tr> <td>IF/ICC</td><td>1:50 - 1:100</td></tr> <tr> <td>IP</td><td>0.5µg-4µg antibody for 200µg-400µg extracts of whole cells</td></tr> <tr> <td>ELISA</td><td>Recommended starting concentration is 1 µg/mL. Please optimize the concentration based on your specific assay requirements.</td></tr> </table>	WB	1:500 - 1:2000	IF/ICC	1:50 - 1:100	IP	0.5µg-4µg antibody for 200µg-400µg extracts of whole cells	ELISA	Recommended starting concentration is 1 µg/mL. Please optimize the concentration based on your specific assay requirements.
WB	1:500 - 1:2000								
IF/ICC	1:50 - 1:100								
IP	0.5µg-4µg antibody for 200µg-400µg extracts of whole cells								
ELISA	Recommended starting concentration is 1 µg/mL. Please optimize the concentration based on your specific assay requirements.								
Protein Quantification (Optional):	To quantify total protein levels, use the Bradford Reagent included in this kit. Visit https://www.assaygenie.com/bradford-protein-assay-protocol/ to view the full protocol								

Validation Data



Western blot analysis of various lysates using FKBP38/FKBP8 Rabbit pAb (CAB7085) at 1:1000 dilution. Secondary antibody: HRP-conjugated Goat anti-Rabbit IgG (H+L) (CABS014) at 1:10000 dilution. Lysates/proteins: 25µg per lane. Blocking buffer: 3% nonfat dry milk in TBST. Detection: ECL Basic Kit (AbGn00020). Exposure time: 5s.



Immunofluorescence analysis of cells using FKBP38/FKBP8 Rabbit pAb (CAB7085). Secondary antibody: Cy3-conjugated Goat anti-Rabbit IgG (H+L) (CABS007) at 1:500 dilution. Blue: DAPI for nuclear staining.