

DPP8 Antibody

CAB7113

Description

This DPP8 Antibody is supplied as a kit for advanced applications. The kit includes Bradford Reagent to quantify total protein concentration for accurate sample normalization (Optional).

Product Information

SKU:	CAB7113
Contents:	20 µL, 100 µL Bradford Reagent: 1 vial (2ml)
Category:	Polyclonal Antibody
Synonyms:	DP8, DPRP1, DPRP-1, MST097, MSTP097, MSTP135, MSTP141, DPP8
Clone:	-
Applications:	WB ELISA
Conjugation:	Unconjugated
Reactivity:	Human, Mouse, Rat

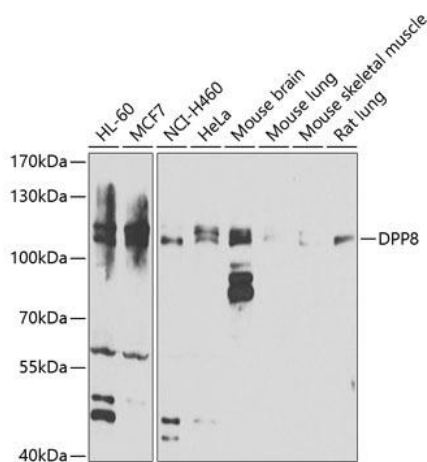
Antibody Data

Gene ID:	54878
Uniprot:	AB_2767668
Host Species:	Rabbit
Purification:	Affinity purification
Observed MW:	103kDa
Calculated MW:	103kDa

Preparation & Storage

Storage:	Store at -20°C. Avoid freeze / thaw cycles. Buffer: PBS containing 50% glycerol, preserved with proclin300 or sodium azide (as specified on the Certificate of Analysis), pH 7.3. Store Bradford Reagent at Room Temperature for 1 Year.				
Positive Sample:	HL-60, MCF7, NCI-H460, HeLa, Mouse brain, Mouse lung, Mouse skeletal muscle, Rat lung				
Recommended Dilutions:	<table border="1"> <tr> <td>WB</td><td>1:500 - 1:2000</td></tr> <tr> <td>ELISA</td><td>Recommended starting concentration is 1 µg/mL. Please optimize the concentration based on your specific assay requirements.</td></tr> </table>	WB	1:500 - 1:2000	ELISA	Recommended starting concentration is 1 µg/mL. Please optimize the concentration based on your specific assay requirements.
WB	1:500 - 1:2000				
ELISA	Recommended starting concentration is 1 µg/mL. Please optimize the concentration based on your specific assay requirements.				
Protein Quantification (Optional):	To quantify total protein levels, use the Bradford Reagent included in this kit. Visit https://www.assaygenie.com/bradford-protein-assay-protocol/ to view the full protocol				

Validation Data



Western blot analysis of various lysates using Rabbit pAb (CAB7113) at 1:1000 dilution. Secondary antibody: HRP-conjugated Goat anti-Rabbit IgG (H+L) (CABS014) at 1:10000 dilution. Lysates/proteins: 25µg per lane. Blocking buffer: 3% nonfat dry milk in TBST. Detection: ECL Basic Kit (AbGn00020). Exposure time: 30s.