

Acetyl-Histone H3-K18 Antibody

CAB7257

Description

This Acetyl-Histone H3-K18 Antibody is supplied as a kit for advanced applications. The kit includes Bradford Reagent to quantify total protein concentration for accurate sample normalization (Optional).

Product Information

SKU:	CAB7257
Contents:	20 µL, 100 µL Bradford Reagent: 1 vial (2ml)
Category:	Polyclonal Antibody
Synonyms:	H3/j, H3C1, H3C2, H3C3, H3C4, H3C6, H3C7, H3C8, H3FJ, H3C10, H3C11, HIST1H3J, Acetyl-Histone H3-K18
Clone:	-
Applications:	WB IHC-P IF/ICC ChIP ELISA DB
Conjugation:	Unconjugated
Reactivity:	Human, Mouse, Rat, Other (Wide Range Predicted)

Antibody Data

Gene ID:	8290 8350
Uniprot:	AB_2767801
Host Species:	Rabbit
Purification:	Affinity purification
Observed MW:	17kDa
Calculated MW:	15kDa

Preparation & Storage

Storage: Store at -20°C. Avoid freeze / thaw cycles. Buffer: PBS containing 50% glycerol, preserved with proclin300 or sodium azide (as specified on the Certificate of Analysis), pH 7.3.

Store Bradford Reagent at Room Temperature for 1 Year.

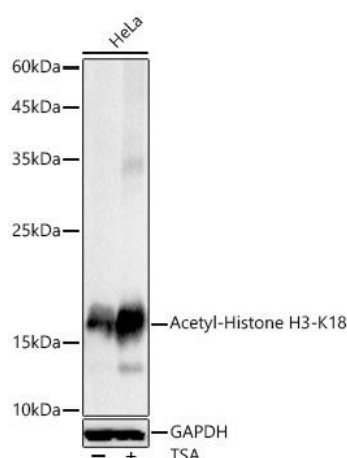
Positive Sample: HeLa treated with TSA

Recommended Dilutions:

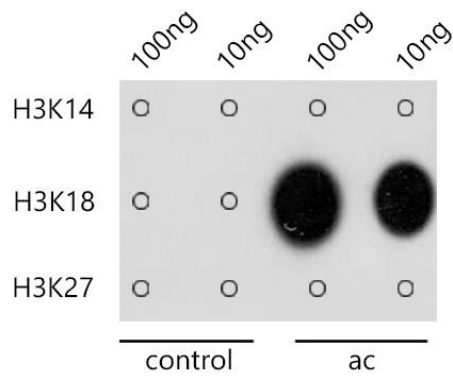
WB	1:500 - 1:1000
DB	1:500 - 1:1000
IHC-P	1:50 - 1:200
IF/ICC	1:50 - 1:200
ELISA	Recommended starting concentration is 1 µg/mL. Please optimize the concentration based on your specific assay requirements. ChIP 5µg antibody for 5µg-10µg of Chromatin

Protein Quantification (Optional): To quantify total protein levels, use the Bradford Reagent included in this kit. Visit <https://www.assaygenie.com/bradford-protein-assay-protocol/> to view the full protocol

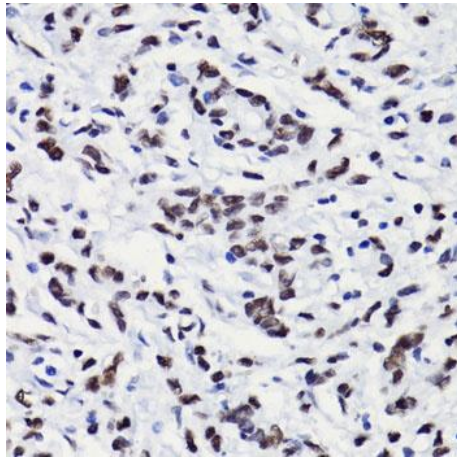
Validation Data



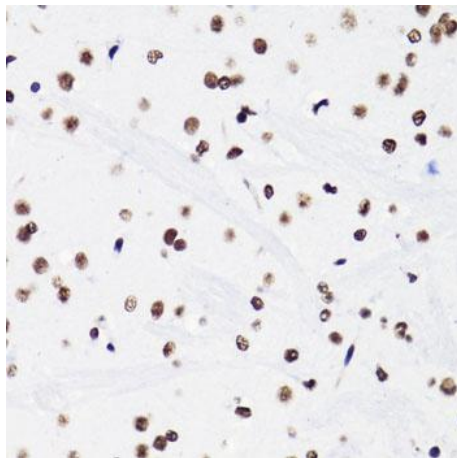
Western blot analysis of lysates from HeLa cells using Acetyl-Histone - Rabbit pAb (CAB7257) at 1:1000 dilution. HeLa cells were treated with TSA (1 µM) at 37°C for 18 hours. Secondary antibody: HRP-conjugated Goat anti-Rabbit IgG (H+L) (CABS014) at 1:10000 dilution. Lysates/proteins: 25 µg per lane. Blocking buffer: 3% nonfat dry milk in TBST. Detection: ECL Basic Kit (AbGn00020). Exposure time: 0.5s.



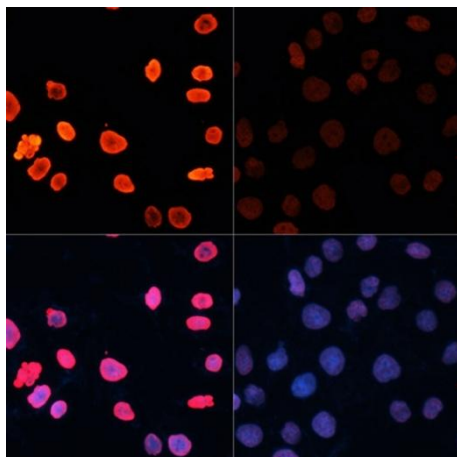
Dot-blot analysis of all sorts of methylation peptides using Acetyl-Histone - antibody (CAB7257) at 1:1000 dilution.



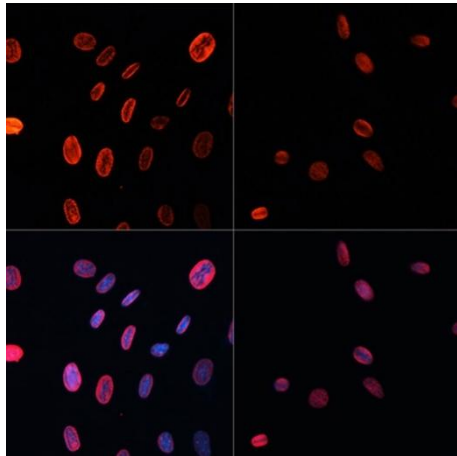
Immunohistochemistry analysis of paraffin-embedded Human gastric cancer using Acetyl-Histone - Rabbit pAb (CAB7257) at dilution of 1:100 (40x lens). Microwave antigen retrieval performed with 0.01M PBS Buffer (pH 7.2) prior to IHC staining.



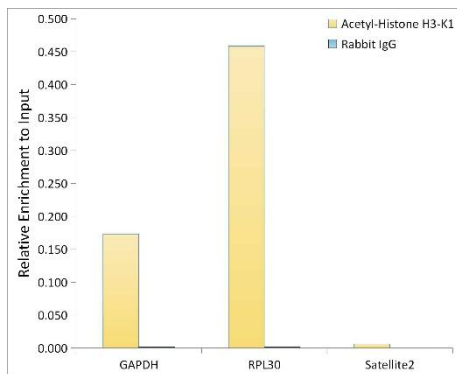
Immunohistochemistry analysis of paraffin-embedded Mouse brain using Acetyl-Histone - Rabbit pAb (CAB7257) at dilution of 1:100 (40x lens). Microwave antigen retrieval performed with 0.01M PBS Buffer (pH 7.2) prior to IHC staining.



Immunofluorescence analysis of HeLa cells using Acetyl-Histone - Rabbit pAb (CAB7257) at dilution of 1:100. HeLa cells were treated with TSA (1 uM) at 37°C for 18 hours. Blue: DAPI for nuclear staining.



Immunofluorescence analysis of NIH/3T3 cells using Acetyl-Histone - Rabbit pAb (CAB7257) at dilution of 1:100. NIH/3T3 cells were treated with TSA (1 μ M) at 37°C for 18 hours. Blue: DAPI for nuclear staining.



Chromatin immunoprecipitation analysis of extracts of cells, using Acetyl-Histone - Rabbit pAb yantibody (CAB7257) and rabbit IgG. The amount of immunoprecipitated DNA was checked by quantitative PCR. Histogram was constructed by the ratios of the immunoprecipitated DNA to the input.