

Acetyl-Histone H4-K8 Antibody

CAB7258

Description

This Acetyl-Histone H4-K8 Antibody is supplied as a kit for advanced applications. The kit includes Bradford Reagent to quantify total protein concentration for accurate sample normalization (Optional).

Product Information

SKU:	CAB7258
Contents:	20 μ L, 100 μ L Bradford Reagent: 1 vial (2ml)
Category:	Polyclonal Antibody
Synonyms:	H4C2, H4C3, H4C4, H4C5, H4C6, H4C8, H4C9, H4FA, H4-16, H4C11, H4C12, H4C13, H4C14, H4C15, H4C16, HIST1H4A, Acetyl-Histone H4-K8
Clone:	-
Applications:	WB IHC-P IF/ICC ChIP ChIP-seq ELISA
Conjugation:	Unconjugated
Reactivity:	Human, Mouse, Rat, Other (Wide Range Predicted)

Antibody Data

Gene ID:	8359
Uniprot:	AB_2767802
Host Species:	Rabbit
Purification:	Affinity purification
Observed MW:	11kDa
Calculated MW:	11kDa

Preparation & Storage

Storage: Store at -20°C. Avoid freeze / thaw cycles. Buffer: PBS containing 50% glycerol, preserved with proclin300 or sodium azide (as specified on the Certificate of Analysis), pH 7.3.

Store Bradford Reagent at Room Temperature for 1 Year.

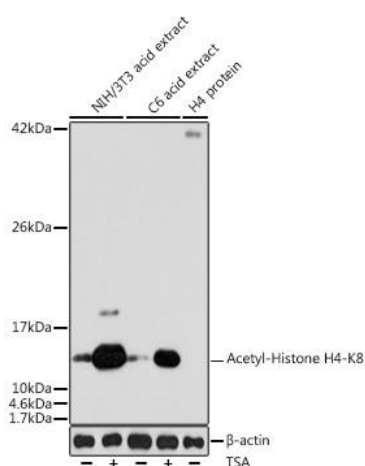
Positive Sample: NIH/3T3 treated with TSA, C6 treated with TSA

Recommended Dilutions:

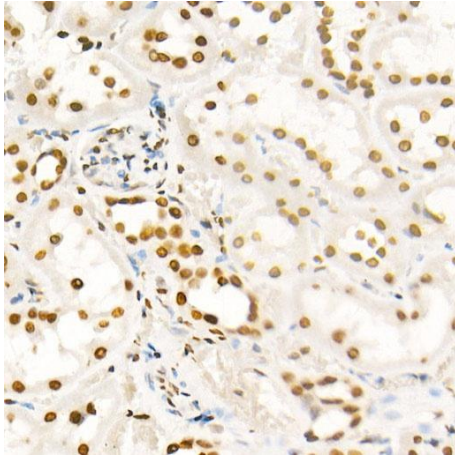
WB	1:500 - 1:1000
IHC-P	1:50 - 1:200
IF/ICC	1:500 - 1:1000
ELISA	Recommended starting concentration is 1 µg/mL. Please optimize the concentration based on your specific assay requirements. ChIP 5µg antibody for 5µg-10µg of Chromatin ChIP-seq 1:20 - 1:50

Protein Quantification (Optional): To quantify total protein levels, use the Bradford Reagent included in this kit. Visit <https://www.assaygenie.com/bradford-protein-assay-protocol/> to view the full protocol

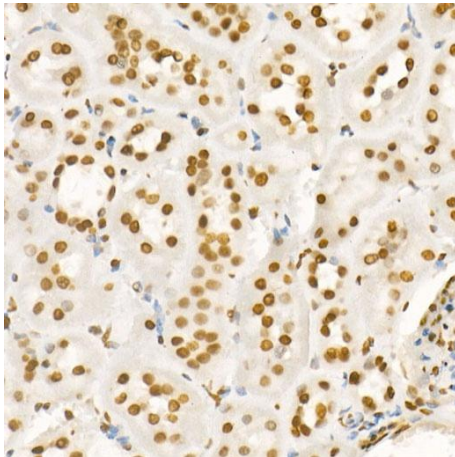
Validation Data



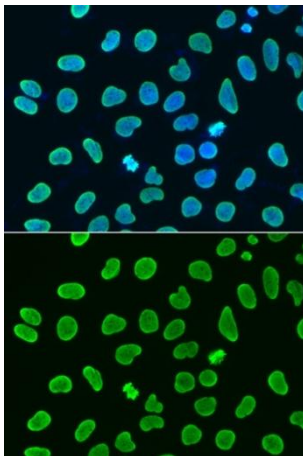
Western blot analysis of various lysates using Acetyl-Histone - Rabbit pAb (CAB7258) at 1:1000 dilution. NIH/3T3 cells and cells were treated with TSA (1 µM) at 37°C for 18 hours. Secondary antibody: HRP-conjugated Goat anti-Rabbit IgG (H+L) (CABS014) at 1:10000 dilution. Lysates/proteins: 25µg per lane. Blocking buffer: 3% nonfat dry milk in TBST. Detection: ECL Basic Kit (AbGn00020). Exposure time: 30s.



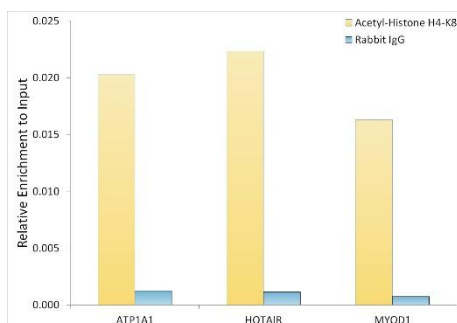
Immunohistochemistry analysis of paraffin-embedded Human kidney using Acetyl-Histone - Rabbit pAb (CAB7258) at dilution of 1:20 (40x lens). High pressure antigen retrieval performed with 0.01M Citrate buffer (pH 6.0) prior to IHC staining.



Immunohistochemistry analysis of paraffin-embedded Rat kidney using Acetyl-Histone - Rabbit pAb (CAB7258) at dilution of 1:20 (40x lens). High pressure antigen retrieval performed with 0.01M Citrate buffer (pH 6.0) prior to IHC staining.



Immunofluorescence analysis of HeLa cells using Acetyl-Histone - Rabbit pAb (CAB7258). Secondary antibody: Cy3-conjugated Goat anti-Rabbit IgG (H+L) (CABS007) at 1:500 dilution. Blue: DAPI for nuclear staining.



Chromatin immunoprecipitation was performed with 5 µg of cross-linked chromatin from HeLa cells, using 5 µg of Acetyl-Histone - Rabbit pAb (CAB7258) and Rabbit IgG isotype control (CABC042). The enrichment of immunoprecipitated DNA at different genomic loci was examined by quantitative PCR. The histogram compares the ratio of the immunoprecipitated DNA to the input at given loci.