

CCL3 Antibody

CAB7568

Description

This CCL3 Antibody is supplied as a kit for advanced applications. The kit includes Bradford Reagent to quantify total protein concentration for accurate sample normalization (Optional).

Product Information

SKU:	CAB7568
Contents:	20 μ L, 100 μ L Bradford Reagent: 1 vial (2ml)
Category:	Polyclonal Antibody
Synonyms:	MIP1A, SCYA3, G0S19-1, LD78ALPHA, MIP-1-alpha, CCL3
Clone:	-
Applications:	WB ELISA
Conjugation:	Unconjugated
Reactivity:	Human, Mouse, Rat

Antibody Data

Gene ID:	6348
Uniprot:	AB_2768091
Host Species:	Rabbit
Purification:	Affinity purification
Observed MW:	11kDa
Calculated MW:	10kDa

Preparation & Storage

Storage: Store at -20°C. Avoid freeze / thaw cycles. Buffer: PBS with 0.09% Sodium azide, 50% glycerol, pH 7.3.

Store Bradford Reagent at Room Temperature for 1 Year.

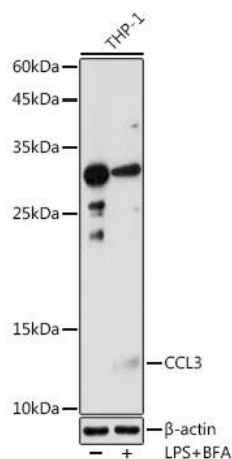
Positive Sample: THP-1 treated with LPS and Brefeldin A

Recommended Dilutions:

WB	1:500 - 1:1000
ELISA	Recommended starting concentration is 1 µg/mL. Please optimize the concentration based on your specific assay requirements.

Protein Quantification (Optional): To quantify total protein levels, use the Bradford Reagent included in this kit. Visit <https://www.assaygenie.com/bradford-protein-assay-protocol/> to view the full protocol

Validation Data



Western blot analysis of lysates from THP-1 cells, using Rabbit pAb (CAB7568) at 1:1000 dilution. THP-1 cells were treated with LPS for 6 hours and Brefeldin A for 3 hours of stimulation. Secondary antibody: HRP-conjugated Goat anti-Rabbit IgG (H+L) (CABS014) at 1:10000 dilution. Lysates/proteins: 25µg per lane. Blocking buffer: 3% nonfat dry milk in TBST. Detection: ECL Enhanced Kit (AbGn00021). Exposure time: 180s.