

[KO Validated] KDM5B Antibody

CAB7772

Description

This [KO Validated] KDM5B Antibody is supplied as a kit for advanced applications. The kit includes Bradford Reagent to quantify total protein concentration for accurate sample normalization (Optional).

Product Information

SKU:	CAB7772
Contents:	20 μ L, 100 μ L Bradford Reagent: 1 vial (2ml)
Category:	Polyclonal Antibody
Synonyms:	CT31, PLU1, PUT1, MRT65, PLU-1, JARID1B, PPP1R98, RBP2-H1, RBBP2H1A, 5B
Clone:	-
Applications:	WB IF/ICC ELISA
Conjugation:	Unconjugated
Reactivity:	Human, Mouse

Antibody Data

Gene ID:	10765
Uniprot:	AB_2770071
Host Species:	Rabbit
Purification:	Affinity purification
Observed MW:	176kDa
Calculated MW:	176kDa

Preparation & Storage

Storage: Store at -20°C. Avoid freeze / thaw cycles. Buffer: PBS containing 50% glycerol, preserved with proclin300 or sodium azide (as specified on the Certificate of Analysis), pH 7.3.

Store Bradford Reagent at Room Temperature for 1 Year.

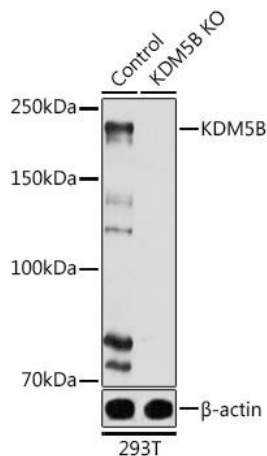
Positive Sample: 293T

Recommended Dilutions:

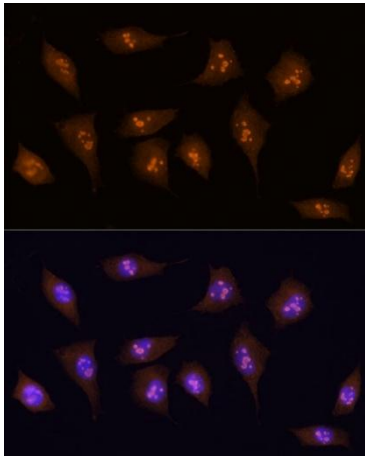
WB	1:500 - 1:1000
IF/ICC	1:50 - 1:200
ELISA	Recommended starting concentration is 1 µg/mL. Please optimize the concentration based on your specific assay requirements.

Protein Quantification (Optional): To quantify total protein levels, use the Bradford Reagent included in this kit. Visit <https://www.assaygenie.com/bradford-protein-assay-protocol/> to view the full protocol

Validation Data



Western blot analysis of lysates from wild type (WT) and KDM5B knockout (KO) 293T cells, using [KO Validated] KDM5B Rabbit pAb (CAB7772) at 1:1000 dilution. Secondary antibody: HRP-conjugated Goat anti-Rabbit IgG (H+L) (CABS014) at 1:10000 dilution. Lysates/proteins: 25µg per lane. Blocking buffer: 3% nonfat dry milk in TBST. Detection: ECL Basic Kit (AbGn00020). Exposure time: 10s.



Immunofluorescence analysis of cells using [KO Validated] KDM5B Rabbit pAb (CAB7772) at dilution of 1:100 (40x lens). Secondary antibody: Cy3-conjugated Goat anti-Rabbit IgG (H+L) (CABS007) at 1:500 dilution. Blue: DAPI for nuclear staining.