

EPHA4 Antibody

CAB8346

Description

This EPHA4 Antibody is supplied as a kit for advanced applications. The kit includes Bradford Reagent to quantify total protein concentration for accurate sample normalization (Optional).

Product Information

SKU:	CAB8346
Contents:	20 µL, 100 µL Bradford Reagent: 1 vial (2ml)
Category:	Polyclonal Antibody
Synonyms:	EK8, SEK, HEK8, TYRO1, EPHA4
Clone:	-
Applications:	WB IF/ICC ELISA
Conjugation:	Unconjugated
Reactivity:	Human, Mouse, Rat

Antibody Data

Gene ID:	2043
Uniprot:	AB_2769336
Host Species:	Rabbit
Purification:	Affinity purification
Observed MW:	110kDa
Calculated MW:	110kDa

Preparation & Storage

Storage: Store at -20°C. Avoid freeze / thaw cycles. Buffer: PBS containing 50% glycerol, preserved with proclin300 or sodium azide (as specified on the Certificate of Analysis), pH 7.3.

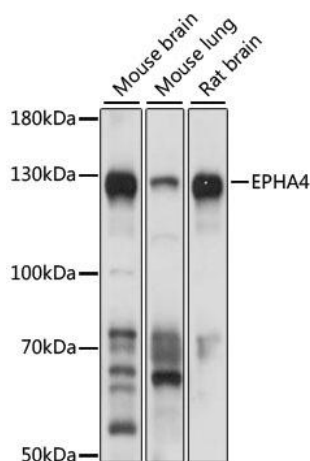
Store Bradford Reagent at Room Temperature for 1 Year.

Positive Sample: Mouse brain, Mouse lung, Rat brain

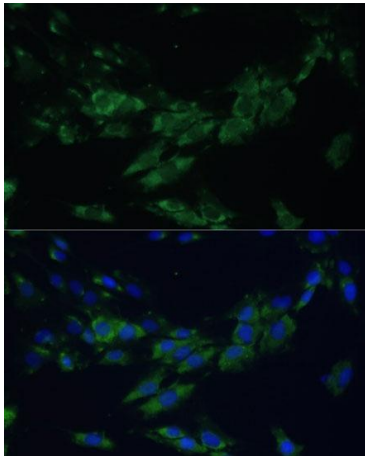
Recommended Dilutions:	WB	1:500 - 1:2000
	IF/ICC	1:50 - 1:200
	ELISA	Recommended starting concentration is 1 µg/mL. Please optimize the concentration based on your specific assay requirements.

Protein Quantification (Optional): To quantify total protein levels, use the Bradford Reagent included in this kit. Visit <https://www.assaygenie.com/bradford-protein-assay-protocol/> to view the full protocol

Validation Data



Western blot analysis of various lysates using EPHA4 Rabbit pAb (CAB8346) at 1:1000 dilution. Secondary antibody: HRP-conjugated Goat anti-Rabbit IgG (H+L) (CABS014) at 1:10000 dilution. Lysates/proteins: 25µg per lane. Blocking buffer: 3% nonfat dry milk in TBST. Detection: ECL Basic Kit (AbGn00020). Exposure time: 3s.



Immunofluorescence analysis of cells using EPHA4 Rabbit pAb (CAB8346) at dilution of 1:100. Secondary antibody: Cy3-conjugated Goat anti-Rabbit IgG (H+L) (CABS007) at 1:500 dilution. Blue: DAPI for nuclear staining.