

METTL3 Antibody

CAB8370

Description

This METTL3 Antibody is supplied as a kit for advanced applications. The kit includes Bradford Reagent to quantify total protein concentration for accurate sample normalization (Optional).

Product Information

SKU:	CAB8370
Contents:	20 μ L, 100 μ L Bradford Reagent: 1 vial (2ml)
Category:	Polyclonal Antibody
Synonyms:	M6A, IME4, Spo8, MT-A70, hMETTL3, METTL3
Clone:	-
Applications:	WB IHC-P IF/ICC ELISA
Conjugation:	Unconjugated
Reactivity:	Human, Mouse, Rat

Antibody Data

Gene ID:	56339
Uniprot:	AB_2770344
Host Species:	Rabbit
Purification:	Affinity purification
Observed MW:	70kDa/75kDa/75kDa
Calculated MW:	64kDa

Preparation & Storage

Storage: Store at -20°C. Avoid freeze / thaw cycles. Buffer: PBS containing 50% glycerol, preserved with proclin300 or sodium azide (as specified on the Certificate of Analysis), pH 7.3.

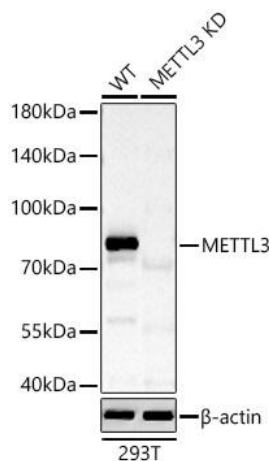
Store Bradford Reagent at Room Temperature for 1 Year.

Positive Sample: NIH/3T3, 293T, HeLa, Hep G2, Mouse testis

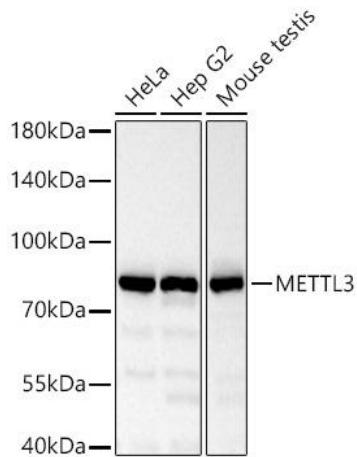
Recommended Dilutions:	WB	1:500 - 1:1000
	IHC-P	1:50 - 1:200
	IF/ICC	1:50 - 1:200
	ELISA	Recommended starting concentration is 1 µg/mL. Please optimize the concentration based on your specific assay requirements.

Protein Quantification (Optional): To quantify total protein levels, use the Bradford Reagent included in this kit. Visit <https://www.assaygenie.com/bradford-protein-assay-protocol/> to view the full protocol

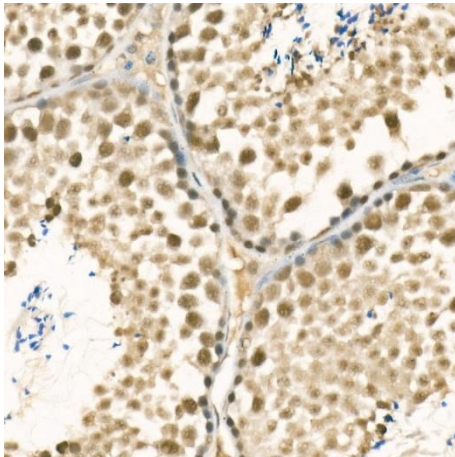
Validation Data



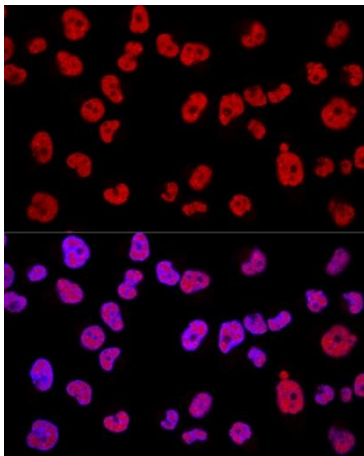
Western blot analysis of lysates from wild type (WT) and METTL3 knockdown (KD) 293T cells using METTL3 Rabbit pAb (CAB8370) at 1:1000 dilution incubated overnight at 4°C. Secondary antibody: HRP-conjugated Goat anti-Rabbit IgG (H+L) (CABS014) at 1:10000 dilution. Lysates/proteins: 25 µg per lane. Blocking buffer: 3% nonfat dry milk in TBST. Detection: ECL Basic Kit (AbGn00020). Exposure time: 30s.



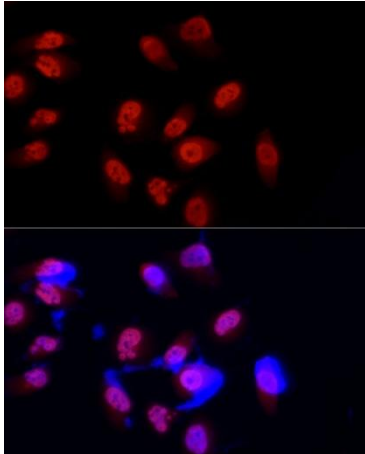
Western blot analysis of various lysates using METTL3 Rabbit pAb (CAB8370) at 1:1000 dilution incubated overnight at 4°C. Secondary antibody: HRP-conjugated Goat anti-Rabbit IgG (H+L) (CABS014) at 1:10000 dilution. Lysates/proteins: 25 µg per lane. Blocking buffer: 3% nonfat dry milk in TBST. Detection: ECL Basic Kit (AbGn00020). Exposure time: 30s.



Immunohistochemistry analysis of paraffin-embedded Mouse testis using METTL3 Rabbit pAb (CAB8370) at dilution of 1:100 (40x lens). High pressure antigen retrieval performed with 0.01M Citrate buffer (pH 6.0) prior to IHC staining.



Confocal immunofluorescence analysis of HeLa cells using METTL3 Rabbit pAb (CAB8370) at dilution of 1:200. Blue: DAPI for nuclear staining.



Immunofluorescence analysis of PC-3 cells using METTL3 Rabbit pAb (CAB8370) at dilution of 1:100 (40x lens). Secondary antibody: Cy3-conjugated Goat anti-Rabbit IgG (H+L) (CABS007) at 1:500 dilution. Blue: DAPI for nuclear staining.