

eIF2B epsilon (EIF2B5) Monoclonal Antibody

CAB8670

Description

This eIF2B epsilon (EIF2B5) Monoclonal Antibody is supplied as a kit for advanced applications. The kit includes Bradford Reagent to quantify total protein concentration for accurate sample normalization (Optional).

Product Information

SKU:	CAB8670
Contents:	20 µL, 100 µL Bradford Reagent: 1 vial (2ml)
Category:	Monoclonal Antibody
Synonyms:	CLE, CACH, LVWM, EIF-2B, EIF2Bepsilon, eIF2B epsilon (EIF2B5)
Clone:	ARC1774
Applications:	WB IHC-P IF/ICC ELISA
Conjugation:	Unconjugated
Reactivity:	Human

Antibody Data

Gene ID:	8893
Uniprot:	AB_2863582
Host Species:	Rabbit
Purification:	Affinity purification
Observed MW:	80kDa
Calculated MW:	80kDa

Preparation & Storage

Storage: Store at -20°C. Avoid freeze / thaw cycles. Buffer: PBS containing 50% glycerol and 0.05% BSA, preserved with proclin300 or sodium azide (as specified on the Certificate of Analysis), pH 7.3.

Store Bradford Reagent at Room Temperature for 1 Year.

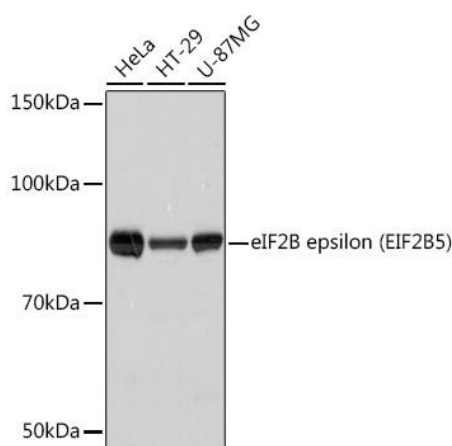
Positive Sample: HeLa, HT-29, U-87MG

Recommended Dilutions:

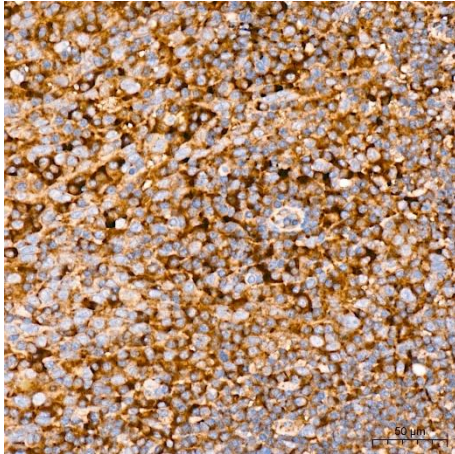
WB	1:1000 - 1:4000
IHC-P	1:50 - 1:200
IF/ICC	1:50 - 1:200
ELISA	Recommended starting concentration is 1 µg/mL. Please optimize the concentration based on your specific assay requirements.

Protein Quantification (Optional): To quantify total protein levels, use the Bradford Reagent included in this kit. Visit <https://www.assaygenie.com/bradford-protein-assay-protocol/> to view the full protocol

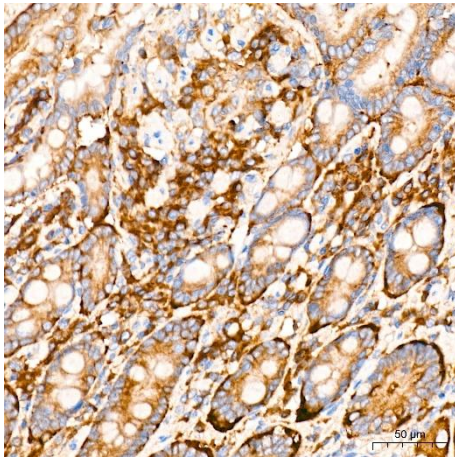
Validation Data



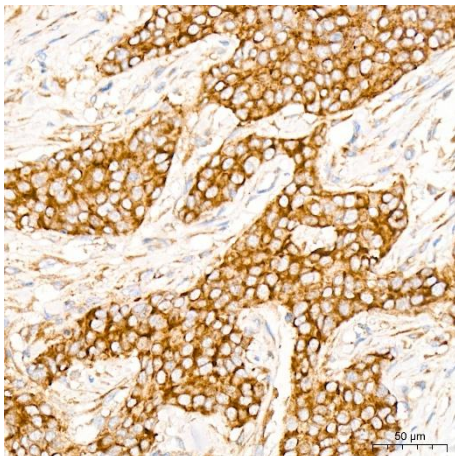
Western blot analysis of various lysates using eIF2B epsilon (EIF2B5) Rabbit mAb (CAB8670) at 1:1000 dilution. Secondary antibody: HRP-conjugated Goat anti-Rabbit IgG (H+L) (CABS014) at 1:10000 dilution. Lysates/proteins: 25µg per lane. Blocking buffer: 3% nonfat dry milk in TBST. Detection: ECL Basic Kit (AbGn00020). Exposure time: 3s.



Immunohistochemistry analysis of paraffin-embedded Human tonsil tissue using eIF2B epsilon (EIF2B5) Rabbit mAb (CAB8670) at a dilution of 1:200 (40x lens). High pressure antigen retrieval was performed with 0.01 M citrate buffer (pH 6.0) prior to IHC staining.



Immunohistochemistry analysis of paraffin-embedded Human colon tissue using eIF2B epsilon (EIF2B5) Rabbit mAb (CAB8670) at a dilution of 1:200 (40x lens). High pressure antigen retrieval was performed with 0.01 M citrate buffer (pH 6.0) prior to IHC staining.



Immunohistochemistry analysis of paraffin-embedded Human breast cancer tissue using eIF2B epsilon (EIF2B5) Rabbit mAb (CAB8670) at a dilution of 1:200 (40x lens). High pressure antigen retrieval was performed with 0.01 M citrate buffer (pH 6.0) prior to IHC staining.