

Haptoglobin (HP) Monoclonal Antibody

CAB8778

Description

This Haptoglobin (HP) Monoclonal Antibody is supplied as a kit for advanced applications. The kit includes Bradford Reagent to quantify total protein concentration for accurate sample normalization (Optional).

Product Information

| | |
|----------------------|---|
| SKU: | CAB8778 |
| Contents: | 20 µL, 100 µL Bradford Reagent: 1 vial (2ml) |
| Category: | Monoclonal Antibody |
| Synonyms: | BP, HPA1S, HP2ALPHA2, Haptoglobin (HP) |
| Clone: | ARC1298 |
| Applications: | WB IHC-P ELISA IF-P |
| Conjugation: | Unconjugated |
| Reactivity: | Human, Mouse, Rat |

Antibody Data

| | |
|-----------------------|-----------------------|
| Gene ID: | 3240 |
| Uniprot: | AB_2863606 |
| Host Species: | Rabbit |
| Purification: | Affinity purification |
| Observed MW: | 40kDa |
| Calculated MW: | 45kDa |

Preparation & Storage

Storage: Store at -20°C. Avoid freeze / thaw cycles. Buffer: PBS containing 50% glycerol and 0.05% BSA, preserved with proclin300 or sodium azide (as specified on the Certificate of Analysis), pH 7.3.

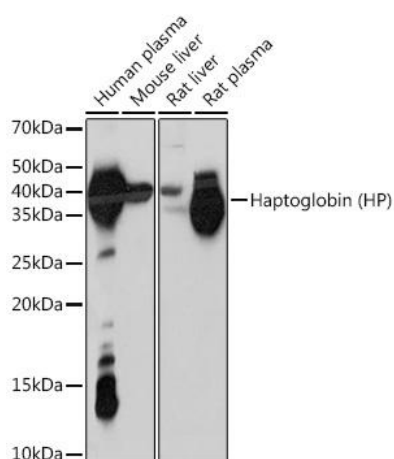
Store Bradford Reagent at Room Temperature for 1 Year.

Positive Sample: Human plasma, Mouse liver, Rat liver, Rat plasma

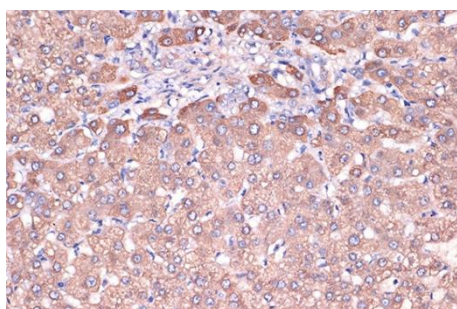
| | | |
|-------------------------------|--------------|---|
| Recommended Dilutions: | WB | 1:500 - 1:2000 |
| | IF-P | 1:50 - 1:200 |
| | IHC-P | 1:50 - 1:200 |
| | ELISA | Recommended starting concentration is 1 µg/mL. Please optimize the concentration based on your specific assay requirements. |

Protein Quantification (Optional): To quantify total protein levels, use the Bradford Reagent included in this kit. Visit <https://www.assaygenie.com/bradford-protein-assay-protocol/> to view the full protocol

Validation Data



Western blot analysis of various lysates using Haptoglobin (HP) (HP) Rabbit mAb (CAB8778) at 1:1000 dilution. Secondary antibody: HRP-conjugated Goat anti-Rabbit IgG (H+L) (CABS014) at 1:10000 dilution. Lysates/proteins: 25µg per lane. Blocking buffer: 3% nonfat dry milk in TBST. Detection: ECL Enhanced Kit (AbGn00021). Exposure time: 10s.



Immunohistochemistry analysis of paraffin-embedded Human liver cancer using Haptoglobin (HP) (HP) Rabbit mAb (CAB8778) at dilution of 1:100 (40x lens). Microwave antigen retrieval performed with 0.01M Tris/EDTA Buffer (pH 9.0) prior to IHC staining.