

Glycogen synthase 1 (GYS1) Monoclonal Antibody

CAB8912

Description

This Glycogen synthase 1 (GYS1) Monoclonal Antibody is supplied as a kit for advanced applications. The kit includes Bradford Reagent to quantify total protein concentration for accurate sample normalization (Optional).

Product Information

SKU:	CAB8912
Contents:	20 μ L, 100 μ L Bradford Reagent: 1 vial (2ml)
Category:	Monoclonal Antibody
Synonyms:	GSY, GYS, Glycogen synthase 1 (GYS1)
Clone:	ARC1350
Applications:	WB ELISA
Conjugation:	Unconjugated
Reactivity:	Human, Mouse, Rat

Antibody Data

Gene ID:	2997
Uniprot:	AB_2863627
Host Species:	Rabbit
Purification:	Affinity purification
Observed MW:	85kDa/84 kDa/84 kDa
Calculated MW:	84kDa

Preparation & Storage

Storage: Store at -20°C. Avoid freeze / thaw cycles. Buffer: PBS containing 50% glycerol and 0.05% BSA, preserved with proclin300 or sodium azide (as specified on the Certificate of Analysis), pH 7.3.

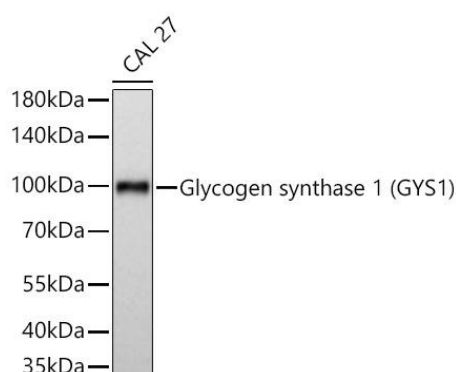
Store Bradford Reagent at Room Temperature for 1 Year.

Positive Sample: CAL 27, Mouse skeletal muscle, Rat skeletal muscle

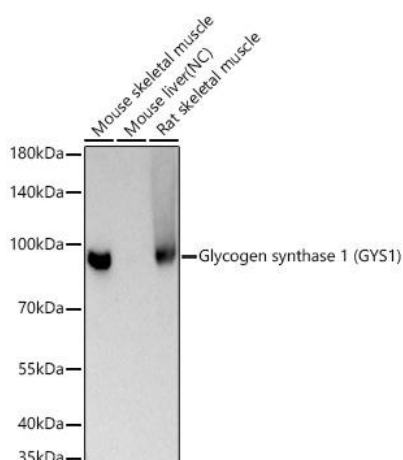
Recommended Dilutions:	WB	1:1000 - 1:2000
	ELISA	Recommended starting concentration is 1 µg/mL. Please optimize the concentration based on your specific assay requirements.

Protein Quantification (Optional): To quantify total protein levels, use the Bradford Reagent included in this kit. Visit <https://www.assaygenie.com/bradford-protein-assay-protocol/> to view the full protocol

Validation Data



Western blot analysis of lysates from CAL 27 cells using Glycogen synthase 1 Rabbit mAb (CAB8912) at 1:1000 dilution incubated overnight at 4°C. Secondary antibody: HRP-conjugated Goat anti-Rabbit IgG (H+L) (CABS014) at 1:10000 dilution. Lysates/proteins: 25 µg per lane. Blocking buffer: 3% nonfat dry milk in TBST. Detection: ECL Basic Kit (AbGn00020). Exposure time: 45 s.



Western blot analysis of various lysates using Glycogen synthase 1 Rabbit mAb (CAB8912) at 1:10000 dilution incubated overnight at 4°C. Secondary antibody: HRP-conjugated Goat anti-Rabbit IgG (H+L) (CABS014) at 1:10000 dilution. Lysates/proteins: 25 µg per lane. Blocking buffer: 3% nonfat dry milk in TBST. Detection: ECL Basic Kit (AbGn00020). Negative control (NC): Mouse liver. Exposure time: 30 s.