

Ube2N/Ubc13 Monoclonal Antibody

CAB9257

Description

This Ube2N/Ubc13 Monoclonal Antibody is supplied as a kit for advanced applications. The kit includes Bradford Reagent to quantify total protein concentration for accurate sample normalization (Optional).

Product Information

SKU:	CAB9257
Contents:	20 μ L, 100 μ L Bradford Reagent: 1 vial (2ml)
Category:	Monoclonal Antibody
Synonyms:	UBC13, Ubch13, UBCHBEN, HEL-S-71, Ubch-ben, Ube2N/Ubc13
Clone:	ARC1495
Applications:	WB IHC-P IF/ICC ELISA
Conjugation:	Unconjugated
Reactivity:	Human, Mouse, Rat

Antibody Data

Gene ID:	7334
Uniprot:	AB_2863696
Host Species:	Rabbit
Purification:	Affinity purification
Observed MW:	17kDa
Calculated MW:	17kDa

Preparation & Storage

Storage: Store at -20°C. Avoid freeze / thaw cycles. Buffer: PBS containing 50% glycerol and 0.05% BSA, preserved with proclin300 or sodium azide (as specified on the Certificate of Analysis), pH 7.3.

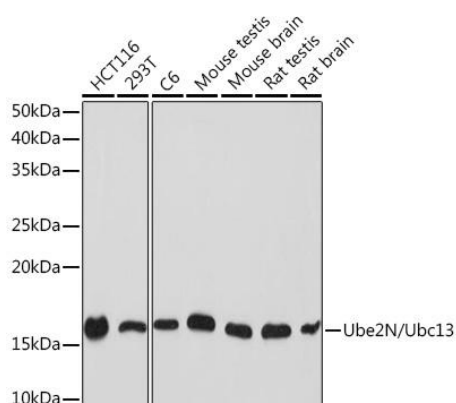
Store Bradford Reagent at Room Temperature for 1 Year.

Positive Sample: HCT 116, 293T, C6, Mouse testis, Mouse brain, Rat testis, Rat brain

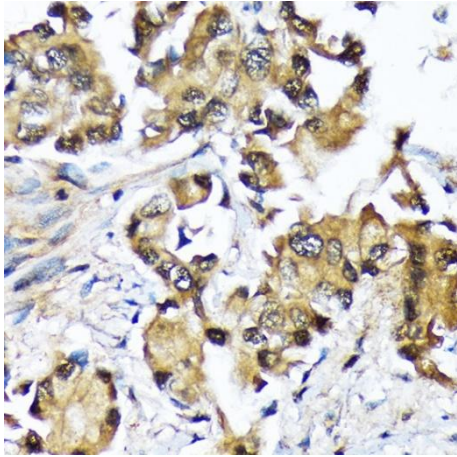
Recommended Dilutions:	WB	1:500 - 1:1000
	IHC-P	1:50 - 1:200
	IF/ICC	1:50 - 1:200
	ELISA	Recommended starting concentration is 1 µg/mL. Please optimize the concentration based on your specific assay requirements.

Protein Quantification (Optional): To quantify total protein levels, use the Bradford Reagent included in this kit. Visit <https://www.assaygenie.com/bradford-protein-assay-protocol/> to view the full protocol

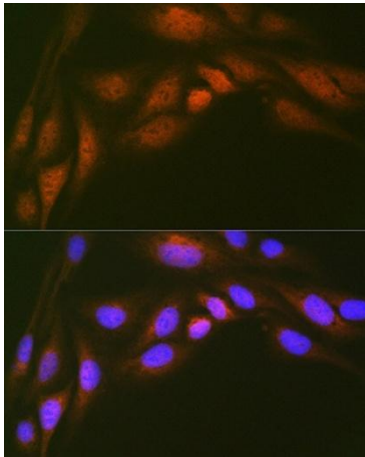
Validation Data



Western blot analysis of various lysates using Ube2N/Ubc13 Rabbit mAb (CAB9257) at 1:1000 dilution. Secondary antibody: HRP-conjugated Goat anti-Rabbit IgG (H+L) (CABS014) at 1:10000 dilution. Lysates/proteins: 25µg per lane. Blocking buffer: 3% nonfat dry milk in TBST. Detection: ECL Basic Kit (AbGn00020). Exposure time: 30s.



Immunohistochemistry analysis of paraffin-embedded Human lung cancer using Ube2N/Ubc13 Rabbit mAb (CAB9257) at dilution of 1:100 (40x lens). Microwave antigen retrieval performed with 0.01M Tris/EDTA Buffer (pH 9.0) prior to IHC staining.



Immunofluorescence analysis of U-2 OS cells using Ube2N/Ubc13 Rabbit mAb (CAB9257) at dilution of 1:100 (40x lens). Secondary antibody: Cy3-conjugated Goat anti-Rabbit IgG (H+L) (CABS007) at 1:500 dilution. Blue: DAPI for nuclear staining.