

## Casein Kinase 1 alpha (CSNK1A1) Monoclonal Antibody

CAB9308

### Description

---

This Casein Kinase 1 alpha (CSNK1A1) Monoclonal Antibody is supplied as a kit for advanced applications. The kit includes Bradford Reagent to quantify total protein concentration for accurate sample normalization (Optional).

### Product Information

---

<b>SKU:</b>	CAB9308
<b>Contents:</b>	20 $\mu$ L, 100 $\mu$ L Bradford Reagent: 1 vial (2ml)
<b>Category:</b>	Monoclonal Antibody
<b>Synonyms:</b>	CK1, CK1a, CK1 $\alpha$ , HLCDGP1, PRO2975, HEL-S-77p, Casein Kinase 1 alpha (CSNK1A1)
<b>Clone:</b>	ARC1860
<b>Applications:</b>	<span>WB</span> <span>IHC-P</span> <span>ELISA</span>
<b>Conjugation:</b>	Unconjugated
<b>Reactivity:</b>	Human, Mouse, Rat

### Antibody Data

---

<b>Gene ID:</b>	1452
<b>Uniprot:</b>	AB_2863708
<b>Host Species:</b>	Rabbit
<b>Purification:</b>	Affinity purification
<b>Observed MW:</b>	35kDa
<b>Calculated MW:</b>	39kDa

## Preparation & Storage

**Storage:** Store at -20°C. Avoid freeze / thaw cycles. Buffer: PBS containing 50% glycerol and 0.05% BSA, preserved with proclin300 or sodium azide (as specified on the Certificate of Analysis), pH 7.3.

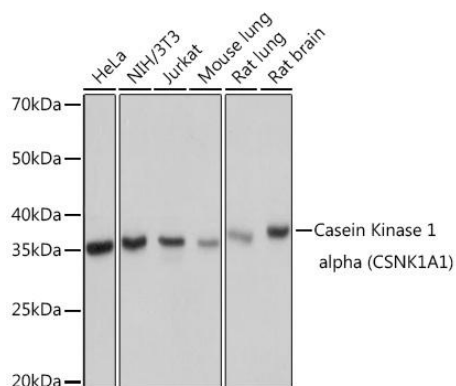
Store Bradford Reagent at Room Temperature for 1 Year.

**Positive Sample:** HeLa, NIH/3T3, Jurkat, Mouse lung, Rat lung, Rat brain

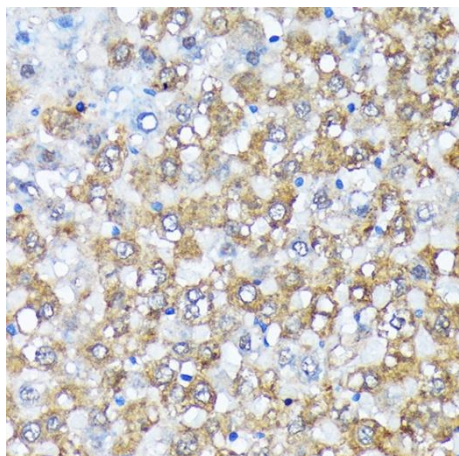
<b>Recommended Dilutions:</b>	<b>WB</b>	1:1000 - 1:6000
	<b>IHC-P</b>	1:50 - 1:200
	<b>ELISA</b>	Recommended starting concentration is 1 µg/mL. Please optimize the concentration based on your specific assay requirements.

**Protein Quantification (Optional):** To quantify total protein levels, use the Bradford Reagent included in this kit. Visit <https://www.assaygenie.com/bradford-protein-assay-protocol/> to view the full protocol

## Validation Data



Western blot analysis of various lysates using Casein Kinase 1 alpha (CSNK1A1) Rabbit mAb (CAB9308) at 1:1000 dilution. Secondary antibody: HRP-conjugated Goat anti-Rabbit IgG (H+L) (CABS014) at 1:10000 dilution. Lysates/proteins: 25µg per lane. Blocking buffer: 3% nonfat dry milk in TBST. Detection: ECL Basic Kit (AbGn00020). Exposure time: 1s.



Immunohistochemistry analysis of paraffin-embedded Rat liver using Casein Kinase 1 alpha (CSNK1A1) Rabbit mAb (CAB9308) at dilution of 1:100 (40x lens). Microwave antigen retrieval performed with 0.01M Tris/EDTA Buffer (pH 9.0) prior to IHC staining.