

Cortactin Monoclonal Antibody

CAB9518

Description

This Cortactin Monoclonal Antibody is supplied as a kit for advanced applications. The kit includes Bradford Reagent to quantify total protein concentration for accurate sample normalization (Optional).

Product Information

SKU:	CAB9518
Contents:	20 μ L, 100 μ L Bradford Reagent: 1 vial (2ml)
Category:	Monoclonal Antibody
Synonyms:	EMS1, Cortactin
Clone:	ARC1613
Applications:	WB IHC-P IP ELISA IF-P
Conjugation:	Unconjugated
Reactivity:	Human, Mouse, Rat

Antibody Data

Gene ID:	2017
Uniprot:	AB_2863711
Host Species:	Rabbit
Purification:	Affinity purification
Observed MW:	80-85kDa
Calculated MW:	62kDa

Preparation & Storage

Storage: Store at -20°C. Avoid freeze / thaw cycles. Buffer: PBS containing 50% glycerol and 0.05% BSA, preserved with proclin300 or sodium azide (as specified on the Certificate of Analysis), pH 7.3.

Store Bradford Reagent at Room Temperature for 1 Year.

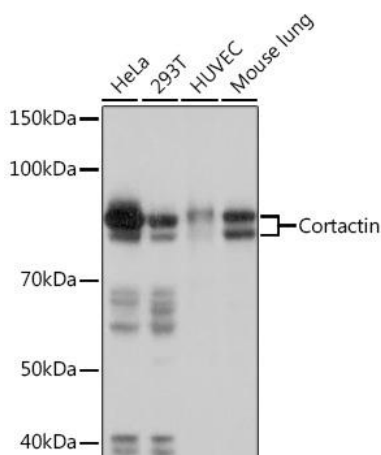
Positive Sample: HeLa, 293T, HUVEC, Mouse lung

Recommended Dilutions:

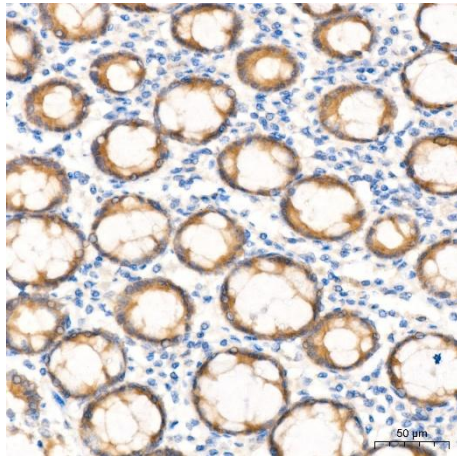
WB	1:1000 - 1:6000
IP	0.5µg-4µg antibody for 400µg-600µg extracts of whole cells
IF-P	1:200 - 1:800
IHC-P	1:200 - 1:800
ELISA	Recommended starting concentration is 1 µg/mL. Please optimize the concentration based on your specific assay requirements.

Protein Quantification (Optional): To quantify total protein levels, use the Bradford Reagent included in this kit. Visit <https://www.assaygenie.com/bradford-protein-assay-protocol/> to view the full protocol

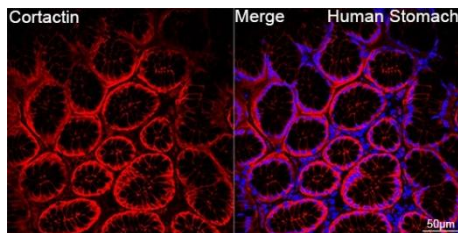
Validation Data



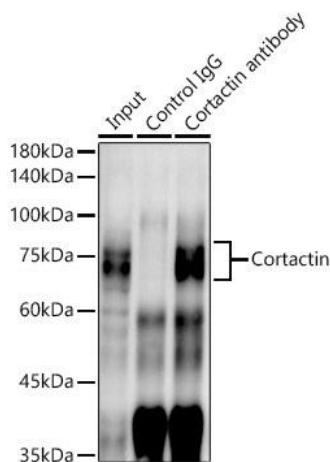
Western blot analysis of various lysates using Cortactin Rabbit mAb (CAB9518) at 1:1000 dilution. Secondary antibody: HRP-conjugated Goat anti-Rabbit IgG (H+L) (CABS014) at 1:10000 dilution. Lysates/proteins: 25µg per lane. Blocking buffer: 3% nonfat dry milk in TBST. Detection: ECL Basic Kit (AbGn00020). Exposure time: 3s.



Immunohistochemistry analysis of paraffin-embedded Human colon tissue using Cortactin Rabbit mAb (CAB9518) at a dilution of 1:200 (40x lens). High pressure antigen retrieval performed with 0.01M Tris-EDTA Buffer (pH 9.0) prior to IHC staining.



Confocal imaging of paraffin-embedded Human stomach tissue using Cortactin Rabbit mAb (CAB9518, dilution 1:200) followed by a further incubation with Cy3 Goat Anti-Rabbit IgG (H+L) (CABS007, dilution 1:500) (Red). DAPI was used for nuclear staining (Blue). Objective: 40x. Perform high pressure antigen retrieval with 0.01 M citrate buffer (pH 6.0) prior to IF staining.



Immunoprecipitation analysis of 600 μg extracts of Mouse lung cells using 3 μg Cortactin antibody (CAB9518). Western blot was performed from the immunoprecipitate using Cortactin antibody (CAB9518) at a dilution of 1:1000.