

LIN28B Monoclonal Antibody

CAB9524

Description

This LIN28B Monoclonal Antibody is supplied as a kit for advanced applications. The kit includes Bradford Reagent to quantify total protein concentration for accurate sample normalization (Optional).

Product Information

SKU:	CAB9524
Contents:	20 µL, 100 µL Bradford Reagent: 1 vial (2ml)
Category:	Monoclonal Antibody
Synonyms:	CSDD2, LIN28B
Clone:	ARC1616
Applications:	WB IHC-P IP ELISA
Conjugation:	Unconjugated
Reactivity:	Human

Antibody Data

Gene ID:	389421
Uniprot:	AB_2863713
Host Species:	Rabbit
Purification:	Affinity purification
Observed MW:	21kDa/32kDa//21kDa/32kDa/21kDa/32kDa
Calculated MW:	27kDa

Preparation & Storage

Storage: Store at -20°C. Avoid freeze / thaw cycles. Buffer: PBS containing 50% glycerol and 0.05% BSA, preserved with proclin300 or sodium azide (as specified on the Certificate of Analysis), pH 7.3.

Store Bradford Reagent at Room Temperature for 1 Year.

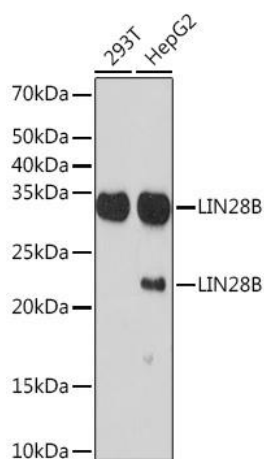
Positive Sample: 293T, Hep G2, , ,

Recommended Dilutions:

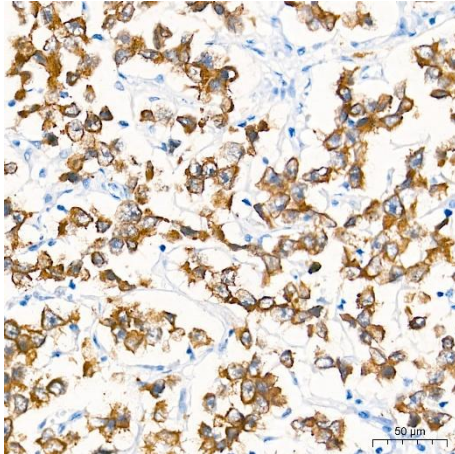
WB	1:500 - 1:1000
IP	0.5µg-4µg antibody for 200µg-400µg extracts of whole cells
IHC-P	1:500 - 1:2000
ELISA	Recommended starting concentration is 1 µg/mL. Please optimize the concentration based on your specific assay requirements.

Protein Quantification (Optional): To quantify total protein levels, use the Bradford Reagent included in this kit. Visit <https://www.assaygenie.com/bradford-protein-assay-protocol/> to view the full protocol

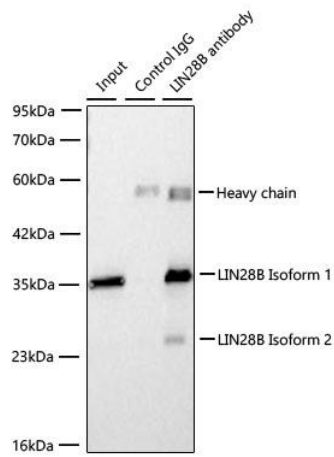
Validation Data



Western blot analysis of various lysates using LIN28B Rabbit mAb (CAB9524) at 1:1000 dilution. Secondary antibody: HRP-conjugated Goat anti-Rabbit IgG (H+L) (CABS014) at 1:10000 dilution. Lysates/proteins: 25µg per lane. Blocking buffer: 3% nonfat dry milk in TBST. Detection: ECL Basic Kit (AbGn00020). Exposure time: 3min.



Immunohistochemistry analysis of paraffin-embedded Human seminoma tissue using LIN28B Rabbit mAb (CAB9524) at a dilution of 1:2000 (40x lens). High pressure antigen retrieval performed with 0.01M Tris-EDTA Buffer (pH 9.0) prior to IHC staining.



Immunoprecipitation of LIN28B from 300 μg extracts of 293F cells was performed using 3 μg of LIN28B Rabbit mAb (CAB9524). Rabbit Control IgG (CABC005) was used to precipitate the Control IgG sample. IP samples were eluted with 1x reducing Laemmli Buffer. The Input lane represents 10% of the total input. Western blot analysis of immunoprecipitates was conducted using LIN28B Rabbit mAb (CAB9524) at a dilution of 1:500.