

## PSMB9/LMP2 Monoclonal Antibody

CAB9549

### Description

---

This PSMB9/LMP2 Monoclonal Antibody is supplied as a kit for advanced applications. The kit includes Bradford Reagent to quantify total protein concentration for accurate sample normalization (Optional).

### Product Information

---

|                      |   |
|----------------------|---|
| <b>SKU:</b>          | CAB9549   |
| <b>Contents:</b>     | 20 µL, 100 µL<br>Bradford Reagent: 1 vial (2ml)       |
| <b>Category:</b>     | Monoclonal Antibody                                   |
| <b>Synonyms:</b>     | LMP2, PRAAS3, PSMB6i, RING12, beta1i, PSMB9/LMP2      |
| <b>Clone:</b>        | ARC1629   |
| <b>Applications:</b> | <span>WB</span> <span>IHC-P</span> <span>ELISA</span> |
| <b>Conjugation:</b>  | Unconjugated  |
| <b>Reactivity:</b>   | Human, Mouse, Rat                                     |

### Antibody Data

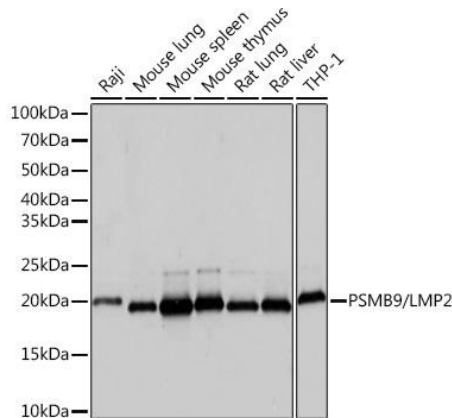
---

|                       |                       |
|-----------------------|-----------------------|
| <b>Gene ID:</b>       | 5698                  |
| <b>Uniprot:</b>       | AB_2863720            |
| <b>Host Species:</b>  | Rabbit                |
| <b>Purification:</b>  | Affinity purification |
| <b>Observed MW:</b>   | 21kDa                 |
| <b>Calculated MW:</b> | 23kDa                 |

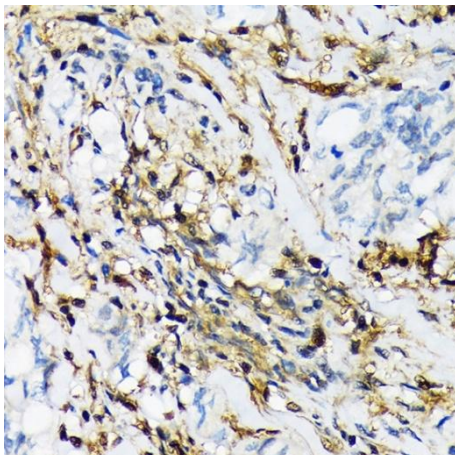
## Preparation & Storage

|   |   |   |
|---|---|---|
| <b>Storage:</b>                           | Store at -20°C. Avoid freeze / thaw cycles. Buffer: PBS containing 50% glycerol and 0.05% BSA, preserved with proclin300 or sodium azide (as specified on the Certificate of Analysis), pH 7.3.<br>Store Bradford Reagent at Room Temperature for 1 Year. |   |
| <b>Positive Sample:</b>                   | Raji, Mouse lung, Mouse spleen, Mouse thymus, Rat lung, Rat liver, THP-1  |   |
| <b>Recommended Dilutions:</b>             | <b>WB</b>   | 1:1000 - 1:6000   |
|   | <b>IHC-P</b>  | 1:50 - 1:200  |
|   | <b>ELISA</b>  | Recommended starting concentration is 1 µg/mL. Please optimize the concentration based on your specific assay requirements. |
| <b>Protein Quantification (Optional):</b> | To quantify total protein levels, use the Bradford Reagent included in this kit. Visit <a href="https://www.assaygenie.com/bradford-protein-assay-protocol/">https://www.assaygenie.com/bradford-protein-assay-protocol/</a> to view the full protocol    |   |

## Validation Data



Western blot analysis of various lysates using PSMB9/ Rabbit mAb (CAB9549) at 1:1000 dilution. Secondary antibody: HRP-conjugated Goat anti-Rabbit IgG (H+L) (CABS014) at 1:10000 dilution. Lysates/proteins: 25µg per lane. Blocking buffer: 3% nonfat dry milk in TBST. Detection: ECL Basic Kit (AbGn00020). Exposure time: 1s.



Immunohistochemistry analysis of paraffin-embedded Human lung cancer using PSMB9/ Rabbit mAb (CAB9549) at dilution of 1:100 (40x lens). Microwave antigen retrieval performed with 0.01M Tris/EDTA Buffer (pH 9.0) prior to IHC staining.

