

## RPS20 Monoclonal Antibody

CAB9551

### Description

---

This RPS20 Monoclonal Antibody is supplied as a kit for advanced applications. The kit includes Bradford Reagent to quantify total protein concentration for accurate sample normalization (Optional).

### Product Information

---

<b>SKU:</b>	CAB9551
<b>Contents:</b>	20 $\mu$ L, 100 $\mu$ L Bradford Reagent: 1 vial (2ml)
<b>Category:</b>	Monoclonal Antibody
<b>Synonyms:</b>	S20, uS10, RPS20
<b>Clone:</b>	ARC1630
<b>Applications:</b>	WB IHC-P IF/ICC IP ELISA
<b>Conjugation:</b>	Unconjugated
<b>Reactivity:</b>	Human, Mouse, Rat

### Antibody Data

---

<b>Gene ID:</b>	6224
<b>Uniprot:</b>	AB_2863721
<b>Host Species:</b>	Rabbit
<b>Purification:</b>	Affinity purification
<b>Observed MW:</b>	16kDa
<b>Calculated MW:</b>	13kDa

## Preparation & Storage

**Storage:** Store at -20°C. Avoid freeze / thaw cycles. Buffer: PBS containing 50% glycerol and 0.05% BSA, preserved with proclin300 or sodium azide (as specified on the Certificate of Analysis), pH 7.3.

Store Bradford Reagent at Room Temperature for 1 Year.

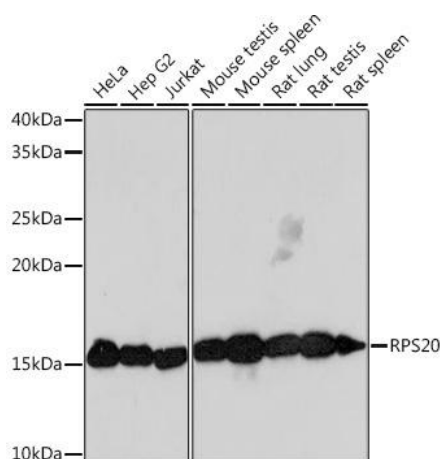
**Positive Sample:** HeLa, Hep G2, Jurkat, Mouse testis, Mouse spleen, Rat lung, Rat testis, Rat spleen

**Recommended Dilutions:**

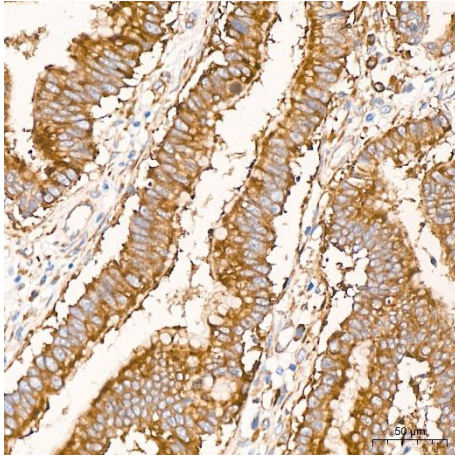
<b>WB</b>	1:500 - 1:1000
<b>IHC-P</b>	1:500 - 1:1000
<b>IF/ICC</b>	1:50 - 1:200
<b>IP</b>	0.5µg-4µg antibody for 200µg-400µg extracts of whole cells
<b>ELISA</b>	Recommended starting concentration is 1 µg/mL. Please optimize the concentration based on your specific assay requirements.

**Protein Quantification (Optional):** To quantify total protein levels, use the Bradford Reagent included in this kit. Visit <https://www.assaygenie.com/bradford-protein-assay-protocol/> to view the full protocol

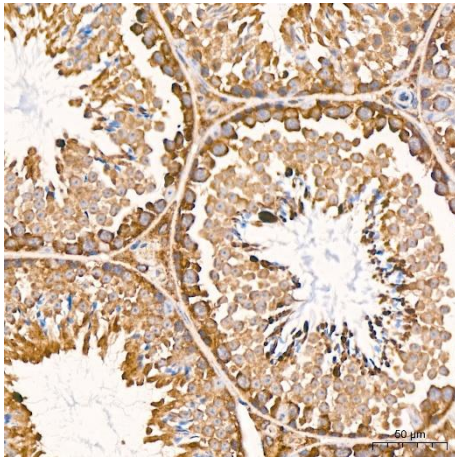
## Validation Data



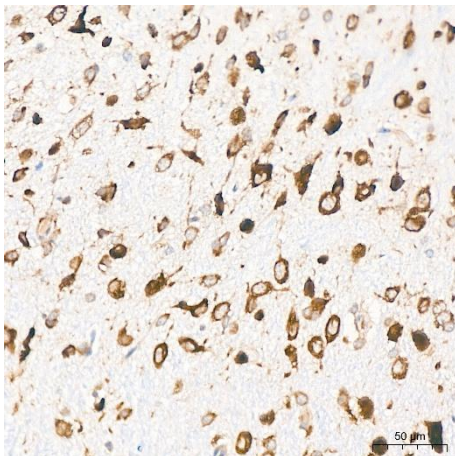
Western blot analysis of various lysates using Rabbit mAb (CAB9551) at 1:1000 dilution. Secondary antibody: HRP-conjugated Goat anti-Rabbit IgG (H+L) (CABS014) at 1:10000 dilution. Lysates/proteins: 25µg per lane. Blocking buffer: 3% nonfat dry milk in TBST. Detection: ECL Basic Kit (AbGn00020). Exposure time: 3min.



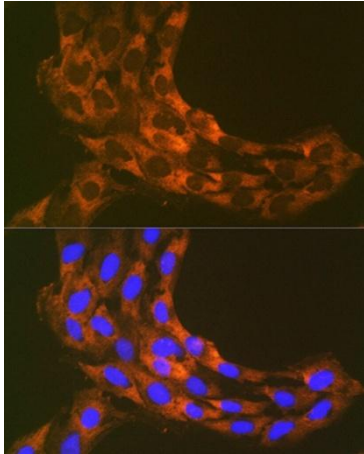
Immunohistochemistry analysis of paraffin-embedded Human colon carcinoma tissue using Rabbit mAb (CAB9551) at a dilution of 1:800 (40x lens). High pressure antigen retrieval performed with 0.01M Citrate buffer (pH 6.0) prior to IHC staining.



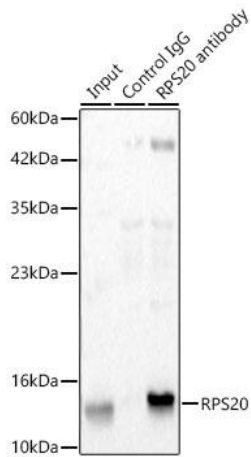
Immunohistochemistry analysis of paraffin-embedded Mouse testis tissue using Rabbit mAb (CAB9551) at a dilution of 1:800 (40x lens). High pressure antigen retrieval performed with 0.01M Citrate buffer (pH 6.0) prior to IHC staining.



Immunohistochemistry analysis of paraffin-embedded Rat brain tissue using Rabbit mAb (CAB9551) at a dilution of 1:800 (40x lens). High pressure antigen retrieval performed with 0.01M Citrate buffer (pH 6.0) prior to IHC staining.



Immunofluorescence analysis of cells using Rabbit mAb (CAB9551) at dilution of 1:100 (40x lens). Secondary antibody: Cy3-conjugated Goat anti-Rabbit IgG (H+L) (CABS007) at 1:500 dilution. Blue: DAPI for nuclear staining.



Immunoprecipitation of in 300  $\mu$ g extracts from Hep cells using 3  $\mu$ g Rabbit mAb (CAB9551). Western blot analysis was performed using Rabbit mAb (CAB9551) at 1:1000 dilution.