

## Chromogranin A Monoclonal Antibody

CAB9576

### Description

---

This Chromogranin A Monoclonal Antibody is supplied as a kit for advanced applications. The kit includes Bradford Reagent to quantify total protein concentration for accurate sample normalization (Optional).

### Product Information

---

<b>SKU:</b>	CAB9576
<b>Contents:</b>	20 $\mu$ L, 100 $\mu$ L Bradford Reagent: 1 vial (2ml)
<b>Category:</b>	Monoclonal Antibody
<b>Synonyms:</b>	CGA, PHE5, PHES, Chromogranin A
<b>Clone:</b>	ARC1643
<b>Applications:</b>	<span>IHC-P</span> <span>ELISA</span> <span>IF-P</span>
<b>Conjugation:</b>	Unconjugated
<b>Reactivity:</b>	Human, Mouse, Rat

### Antibody Data

---

<b>Gene ID:</b>	1113
<b>Uniprot:</b>	-
<b>Host Species:</b>	Rabbit
<b>Purification:</b>	Affinity purification
<b>Observed MW:</b>	Refer to figures
<b>Calculated MW:</b>	51kDa

## Preparation & Storage

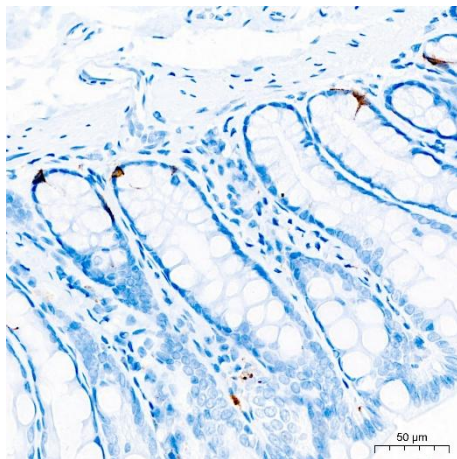
**Storage:** Store at -20°C. Avoid freeze / thaw cycles. Buffer: PBS containing 50% glycerol and 0.05% BSA, preserved with proclin300 or sodium azide (as specified on the Certificate of Analysis), pH 7.3.  
Store Bradford Reagent at Room Temperature for 1 Year.

**Positive Sample:** -

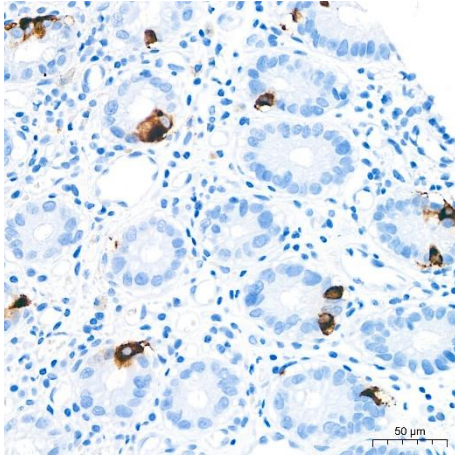
<b>Recommended Dilutions:</b>	<b>IF-P</b>	1:50 - 1:200
	<b>IHC-P</b>	1:1000 - 1:5000
	<b>ELISA</b>	Recommended starting concentration is 1 µg/mL. Please optimize the concentration based on your specific assay requirements.

**Protein Quantification (Optional):** To quantify total protein levels, use the Bradford Reagent included in this kit. Visit <https://www.assaygenie.com/bradford-protein-assay-protocol/> to view the full protocol

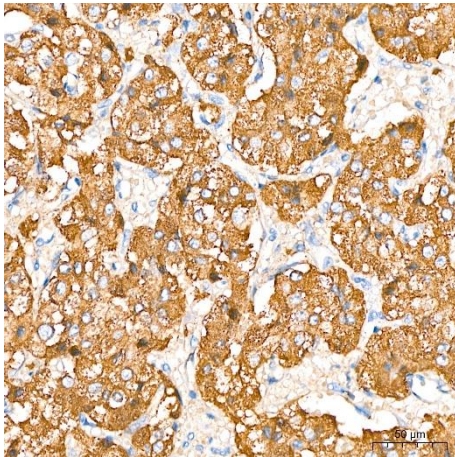
## Validation Data



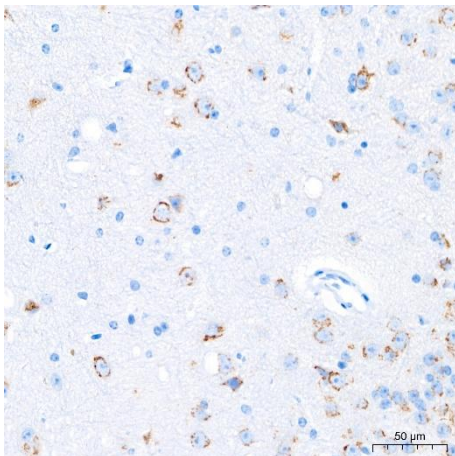
Immunohistochemistry analysis of paraffin-embedded Rat colon tissue using Chromogranin A Rabbit mAb (CAB9576) at a dilution of 1:4000 (40x lens). High pressure antigen retrieval performed with 0.01M Citrate Buffer (pH 6.0) prior to IHC staining.



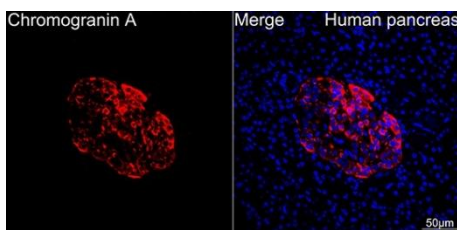
Immunohistochemistry analysis of paraffin-embedded Human colon tissue using Chromogranin A Rabbit mAb (CAB9576) at a dilution of 1:4000 (40x lens). High pressure antigen retrieval performed with 0.01M Citrate Buffer (pH 6.0) prior to IHC staining.



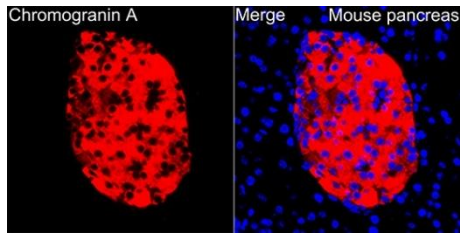
Immunohistochemistry analysis of paraffin-embedded Human pheochromocytoma tissue using Chromogranin A Rabbit mAb (CAB9576) at a dilution of 1:4000 (40x lens). High pressure antigen retrieval performed with 0.01M Citrate Buffer (pH 6.0) prior to IHC staining.



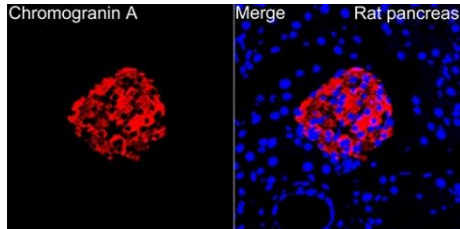
Immunohistochemistry analysis of paraffin-embedded Mouse brain tissue using Chromogranin A Rabbit mAb (CAB9576) at a dilution of 1:4000 (40x lens). High pressure antigen retrieval performed with 0.01M Citrate Buffer (pH 6.0) prior to IHC staining.



Confocal imaging of paraffin-embedded Human pancreas tissue using Chromogranin A Rabbit mAb (CAB9576, dilution 1:100) followed by a further incubation with Cy3 Goat Anti-Rabbit IgG (H+L) (CABS007, dilution 1:500) (Red). DAPI was used for nuclear staining (Blue). High pressure antigen retrieval performed with 0.01M Citrate Buffer (pH 6.0) prior to IF staining. Objective: 40x.



Confocal imaging of paraffin-embedded Mouse pancreas tissue using Chromogranin A Rabbit mAb (CAB9576, dilution 1:100) followed by a further incubation with Cy3 Goat Anti-Rabbit IgG (H+L) (CABS007, dilution 1:500) (Red). DAPI was used for nuclear staining (Blue). High pressure antigen retrieval performed with 0.01M Citrate Buffer (pH 6.0) prior to IF staining. Objective: 40x.



Confocal imaging of paraffin-embedded Rat pancreas tissue using Chromogranin A Rabbit mAb (CAB9576, dilution 1:100) followed by a further incubation with Cy3 Goat Anti-Rabbit IgG (H+L) (CABS007, dilution 1:500) (Red). DAPI was used for nuclear staining (Blue). High pressure antigen retrieval performed with 0.01M Citrate Buffer (pH 6.0) prior to IF staining. Objective: 40x.