

GABARAPL2 Monoclonal Antibody

CAB9585

Description

This GABARAPL2 Monoclonal Antibody is supplied as a kit for advanced applications. The kit includes Bradford Reagent to quantify total protein concentration for accurate sample normalization (Optional).

Product Information

SKU:	CAB9585
Contents:	20 μ L, 100 μ L Bradford Reagent: 1 vial (2ml)
Category:	Monoclonal Antibody
Synonyms:	ATG8, GEF2, ATG8C, GEF-2, GATE16, GATE-16, FLC3A, GABARAPL2
Clone:	ARC1648
Applications:	WB ELISA
Conjugation:	Unconjugated
Reactivity:	Human, Mouse, Rat

Antibody Data

Gene ID:	11345
Uniprot:	AB_2863730
Host Species:	Rabbit
Purification:	Affinity purification
Observed MW:	16kDa
Calculated MW:	14kDa

Preparation & Storage

Storage: Store at -20°C. Avoid freeze / thaw cycles. Buffer: PBS containing 50% glycerol and 0.05% BSA, preserved with proclin300 or sodium azide (as specified on the Certificate of Analysis), pH 7.3.

Store Bradford Reagent at Room Temperature for 1 Year.

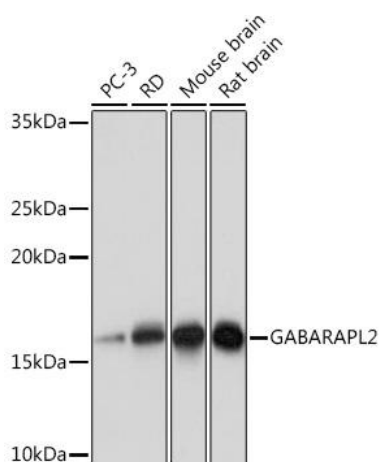
Positive Sample: PC-3, RD, Mouse brain, Rat brain

Recommended Dilutions:

WB	1:500 - 1:1000
ELISA	Recommended starting concentration is 1 µg/mL. Please optimize the concentration based on your specific assay requirements.

Protein Quantification (Optional): To quantify total protein levels, use the Bradford Reagent included in this kit. Visit <https://www.assaygenie.com/bradford-protein-assay-protocol/> to view the full protocol

Validation Data



Western blot analysis of various lysates using GABARAPL2 Rabbit mAb (CAB9585) at 1:1000 dilution. Secondary antibody: HRP-conjugated Goat anti-Rabbit IgG (H+L) (CABS014) at 1:10000 dilution. Lysates/proteins: 25µg per lane. Blocking buffer: 3% nonfat dry milk in TBST. Detection: ECL Basic Kit (AbGn00020). Exposure time: 10s.