

## OPA1 Antibody

CAB9833

### Description

---

This OPA1 Antibody is supplied as a kit for advanced applications. The kit includes Bradford Reagent to quantify total protein concentration for accurate sample normalization (Optional).

### Product Information

---

<b>SKU:</b>	CAB9833
<b>Contents:</b>	20 µL, 100 µL Bradford Reagent: 1 vial (2ml)
<b>Category:</b>	Polyclonal Antibody
<b>Synonyms:</b>	NPG, NTG, MGM1, BERHS, largeG, MTDPS14, OPA1
<b>Clone:</b>	-
<b>Applications:</b>	<span>WB</span> <span>IHC-P</span> <span>IF/ICC</span> <span>ELISA</span>
<b>Conjugation:</b>	Unconjugated
<b>Reactivity:</b>	Human, Mouse, Rat

### Antibody Data

---

<b>Gene ID:</b>	4976
<b>Uniprot:</b>	AB_2770723
<b>Host Species:</b>	Rabbit
<b>Purification:</b>	Affinity purification
<b>Observed MW:</b>	80-100kDa
<b>Calculated MW:</b>	112kDa



## Preparation & Storage

**Storage:** Store at -20°C. Avoid freeze / thaw cycles. Buffer: PBS containing 50% glycerol, preserved with proclin300 or sodium azide (as specified on the Certificate of Analysis), pH 7.3.

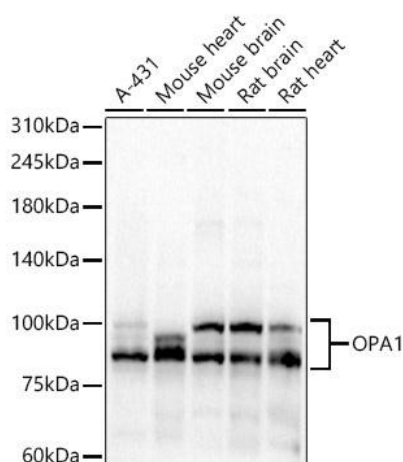
Store Bradford Reagent at Room Temperature for 1 Year.

**Positive Sample:** A-431, Mouse heart, Mouse brain, Rat brain, Rat heart

<b>Recommended Dilutions:</b>	<b>WB</b>	1:2000 - 1:8000
	<b>IF/ICC</b>	1:50 - 1:200
	<b>IHC-P</b>	1:500 - 1:2000
	<b>ELISA</b>	Recommended starting concentration is 1 µg/mL. Please optimize the concentration based on your specific assay requirements.

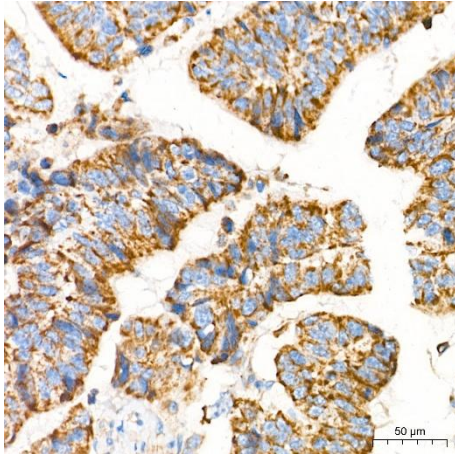
**Protein Quantification (Optional):** To quantify total protein levels, use the Bradford Reagent included in this kit. Visit <https://www.assaygenie.com/bradford-protein-assay-protocol/> to view the full protocol

## Validation Data

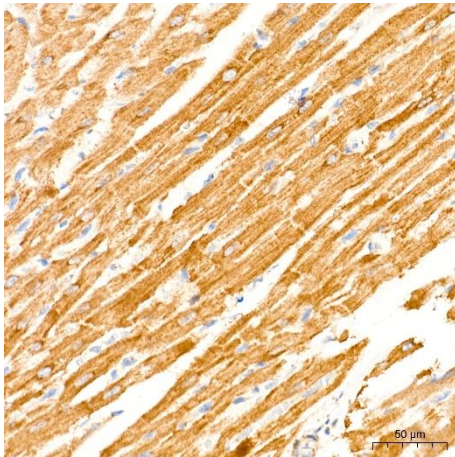


Western blot analysis of various lysates, using Rabbit pAb (CAB9833) at 1:7000 dilution. Secondary antibody: HRP-conjugated Goat anti-Rabbit IgG (H+L) (CABS014) at 1:10000 dilution. Lysates/proteins: 25µg per lane. Blocking buffer: 3% nonfat dry milk in TBST. Detection: ECL Basic Kit (AbGn00020). Exposure time: 30s.





Immunohistochemistry analysis of paraffin-embedded Human colon carcinoma tissue using Rabbit pAb (CAB9833) at a dilution of 1:1000 (40x lens). High pressure antigen retrieval performed with 0.01M Tris-EDTA Buffer (pH 9.0) prior to IHC staining.



Immunohistochemistry analysis of paraffin-embedded Rat heart tissue using Rabbit pAb (CAB9833) at a dilution of 1:1000 (40x lens). High pressure antigen retrieval performed with 0.01M Tris-EDTA Buffer (pH 9.0) prior to IHC staining.