

MRPS6 Antibody

CAB9884

Description

This MRPS6 Antibody is supplied as a kit for advanced applications. The kit includes Bradford Reagent to quantify total protein concentration for accurate sample normalization (Optional).

Product Information

SKU:	CAB9884
Contents:	20 μ L, 100 μ L Bradford Reagent: 1 vial (2ml)
Category:	Polyclonal Antibody
Synonyms:	S6mt, RPMS6, MRP-S6, C21orf101, MRPS6
Clone:	-
Applications:	WB ELISA
Conjugation:	Unconjugated
Reactivity:	Human, Mouse, Rat

Antibody Data

Gene ID:	64968
Uniprot:	AB_2770439
Host Species:	Rabbit
Purification:	Affinity purification
Observed MW:	14kDa
Calculated MW:	14kDa

Preparation & Storage

Storage: Store at -20°C. Avoid freeze / thaw cycles. Buffer: PBS containing 50% glycerol, preserved with proclin300 or sodium azide (as specified on the Certificate of Analysis), pH 7.3.

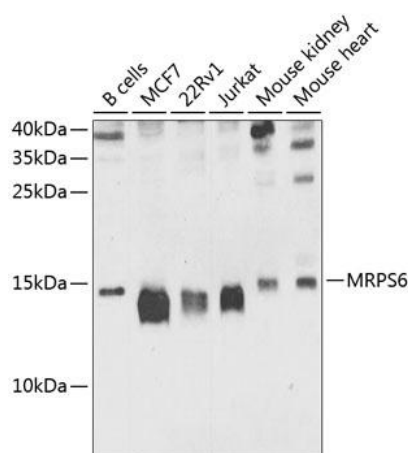
Store Bradford Reagent at Room Temperature for 1 Year.

Positive Sample: B cells, MCF7, 22Rv1, Jurkat, Mouse kidney, Mouse heart

Recommended Dilutions:	WB	1:500 - 1:2000
	ELISA	Recommended starting concentration is 1 µg/mL. Please optimize the concentration based on your specific assay requirements.

Protein Quantification (Optional): To quantify total protein levels, use the Bradford Reagent included in this kit. Visit <https://www.assaygenie.com/bradford-protein-assay-protocol/> to view the full protocol

Validation Data



Western blot analysis of various lysates using MRPS6 Rabbit pAb (CAB9884) at 1:1000 dilution. Secondary antibody: HRP-conjugated Goat anti-Rabbit IgG (H+L) (CABS014) at 1:10000 dilution. Lysates/proteins: 25µg per lane. Blocking buffer: 3% nonfat dry milk in TBST. Detection: ECL Basic Kit (AbGn00020). Exposure time: 15s.