

## GAPDH Rabbit pAb

CABC001

### Description

---

This GAPDH Rabbit pAb is supplied as a kit for advanced applications. The kit includes Bradford Reagent to quantify total protein concentration for accurate sample normalization (Optional).

### Product Information

---

<b>SKU:</b>	CABC001
<b>Contents:</b>	20 µL, 100 µL Bradford Reagent: 1 vial (2ml)
<b>Category:</b>	Polyclonal Antibody
<b>Synonyms:</b>	G3PD, GAPD, HEL-S-162eP, GAPDH
<b>Clone:</b>	-
<b>Applications:</b>	WB IHC-P IF/ICC IP
<b>Conjugation:</b>	Unconjugated
<b>Reactivity:</b>	Human, Mouse, Rat

### Antibody Data

---

<b>Gene ID:</b>	2597
<b>Uniprot:</b>	AB_2619673
<b>Host Species:</b>	Rabbit
<b>Purification:</b>	Affinity purification
<b>Observed MW:</b>	-
<b>Calculated MW:</b>	36kDa

## Preparation & Storage

**Storage:** Store at -20°C. Avoid freeze / thaw cycles. Buffer: PBS containing 50% glycerol, preserved with proclin300 or sodium azide (as specified on the Certificate of Analysis), pH 7.3.

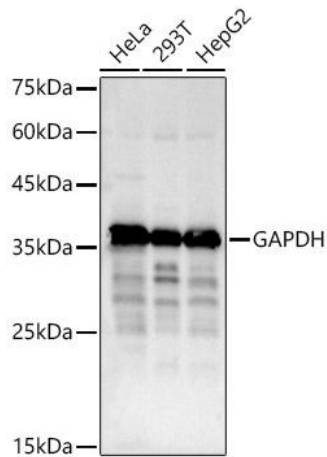
Store Bradford Reagent at Room Temperature for 1 Year.

**Positive Sample:** HeLa, 293T, Hep G2, Mouse liver, Rat liver

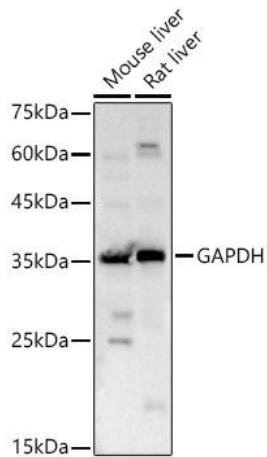
<b>Recommended Dilutions:</b>	<b>WB</b>	1:10000 - 1:30000
	<b>IHC-P</b>	1:50 - 1:200
	<b>IF/ICC</b>	1:50 - 1:200
	<b>IP</b>	0.5µg-4µg antibody for 200µg-400µg extracts of whole cells

**Protein Quantification (Optional):** To quantify total protein levels, use the Bradford Reagent included in this kit. Visit <https://www.assaygenie.com/bradford-protein-assay-protocol/> to view the full protocol

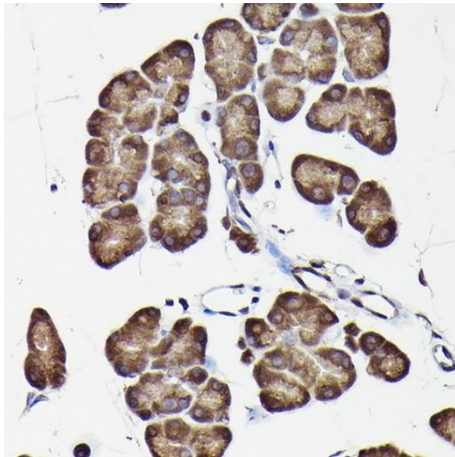
## Validation Data



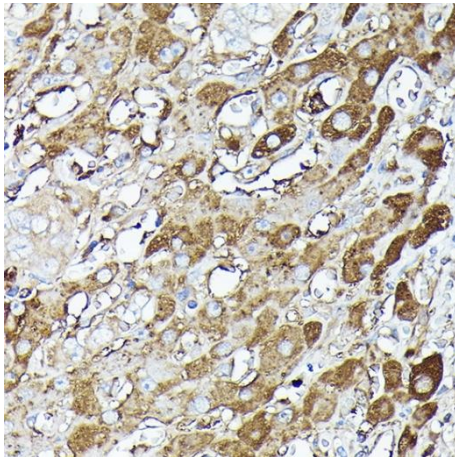
Western blot analysis of various lysates using GAPDH Rabbit pAb (CABC001) at 1:30000 dilution. Secondary antibody: HRP-conjugated Goat anti-Rabbit IgG (H+L) (CABS014) at 1:10000 dilution. Lysates/proteins: 25µg per lane. Blocking buffer: 3% nonfat dry milk in TBST. Detection: ECL Basic Kit (AbGn00020). Exposure time: 3s.



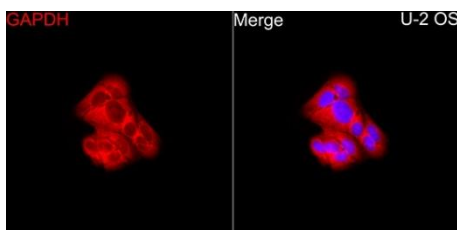
Western blot analysis of various lysates using GAPDH Rabbit pAb (CABC001) at 1:30000 dilution. Secondary antibody: HRP-conjugated Goat anti-Rabbit IgG (H+L) (CABS014) at 1:10000 dilution. Lysates/proteins: 25µg per lane. Blocking buffer: 3% nonfat dry milk in TBST. Detection: ECL Basic Kit (AbGn00020). Exposure time: 10s.



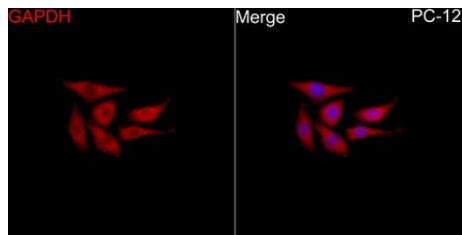
Immunohistochemistry analysis of paraffin-embedded Rat pancreas using GAPDH Rabbit pAb (CABC001) at dilution of 1:100 (40x lens). High pressure antigen retrieval performed with 0.01M Citrate buffer (pH 6.0) prior to IHC staining.



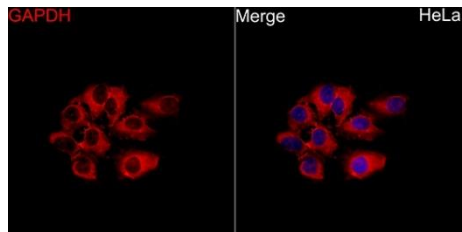
Immunohistochemistry analysis of paraffin-embedded Human liver cancer using GAPDH Rabbit pAb (CABC001) at dilution of 1:100 (40x lens). High pressure antigen retrieval performed with 0.01M Citrate buffer (pH 6.0) prior to IHC staining.



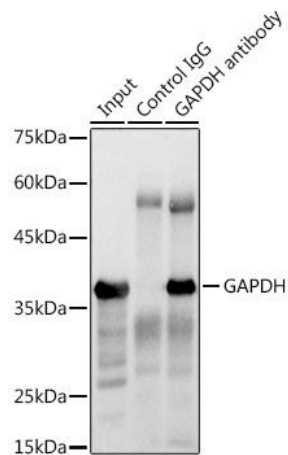
Immunofluorescence analysis of U-2 OS cells using GAPDH Rabbit pAb (CABC001) at a dilution of 1:25 (40x lens). Secondary antibody: Cy3 Goat Anti-Rabbit IgG (H+L) (CABS007) at 1:500 dilution. Blue: DAPI for nuclear staining.



Immunofluorescence analysis of PC-12 cells using GAPDH Rabbit pAb(CABC001) at a dilution of 1:25 (40x lens). Secondary antibody: Cy3 Goat Anti-Rabbit IgG (H+L)(CABS007) at 1:500 dilution. Blue: DAPI for nuclear staining.



Immunofluorescence analysis of HeLa cells using GAPDH Rabbit pAb(CABC001) at a dilution of 1:25 (40x lens). Secondary antibody: Cy3 Goat Anti-Rabbit IgG (H+L)(CABS007) at 1:500 dilution. Blue: DAPI for nuclear staining.



Immunoprecipitation analysis of 300 µg extracts of HeLa cells using 3 µg GAPDH antibody (CABC001). Western blot was performed from the immunoprecipitate using GAPDH antibody (CABC001) at a dilution of 1:20000.