

Rabbit anti GFP-Tag Polyconal Antibody

CABE011

Description

This Rabbit anti GFP-Tag Polyconal Antibody is supplied as a kit for advanced applications. The kit includes Bradford Reagent to quantify total protein concentration for accurate sample normalization (Optional).

Product Information

SKU:	CABE011
Contents:	20 µL, 100 µL Bradford Reagent: 1 vial (2ml)
Category:	Polyclonal Antibody
Synonyms:	GFP, GFP tag, GFP-tag
Clone:	-
Applications:	WB IF/ICC
Conjugation:	Unconjugated
Reactivity:	Species independent

Antibody Data

Gene ID:	-
Uniprot:	AB_2771922
Host Species:	Rabbit
Purification:	Affinity purification
Observed MW:	25kDa
Calculated MW:	27kDa

Preparation & Storage

Storage: Store at -20°C. Avoid freeze / thaw cycles. Buffer: PBS containing 50% glycerol, preserved with proclin300 or sodium azide (as specified on the Certificate of Analysis), pH 7.3.

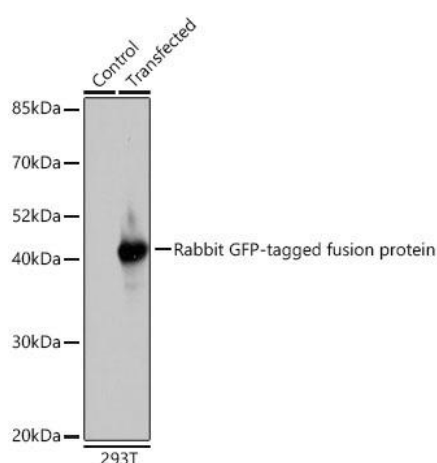
Store Bradford Reagent at Room Temperature for 1 Year.

Positive Sample: 293T, insect

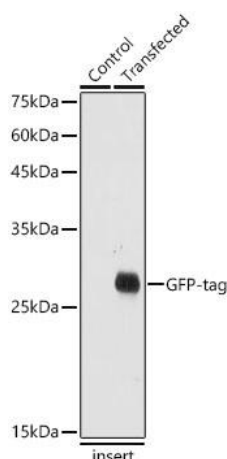
Recommended Dilutions:	WB	1:2000 - 1:20000
	IF/ICC	1:50 - 1:200

Protein Quantification (Optional): To quantify total protein levels, use the Bradford Reagent included in this kit. Visit <https://www.assaygenie.com/bradford-protein-assay-protocol/> to view the full protocol

Validation Data



Western blot analysis of extracts of normal 293T cells and 293T transfected with GFP-tagged fusion protein, using Rabbit anti GFP-Tag pAb (CABE011) at 1:1000 dilution. Secondary antibody: HRP-conjugated Goat anti-Rabbit IgG (H+L) (CABS014) at 1:10000 dilution. Lysates/proteins: 25µg per lane. Blocking buffer: 3% nonfat dry milk in TBST. Detection: ECL Basic Kit (AbGn00020). Exposure time: 10s.



Western blot analysis of extracts of normal Eukaryotic expression of GFP and Eukaryotic expression of GFP transfected with GFP Protein, using Rabbit anti GFP-Tag pAb (CABE011) at 1:20000 dilution. Secondary antibody: HRP-conjugated Goat anti-Rabbit IgG (H+L) (CABS014) at 1:10000 dilution. Lysates/proteins: 25µg per lane. Blocking buffer: 3% nonfat dry milk in TBST. Detection: ECL Basic Kit (AbGn00020). Exposure time: 1s.