

Rabbit anti His-Tag pAb

CABE068

Description

This Rabbit anti His-Tag pAb is supplied as a kit for advanced applications. The kit includes Bradford Reagent to quantify total protein concentration for accurate sample normalization (Optional).

Product Information

SKU:	CABE068
Contents:	20 µL, 100 µL Bradford Reagent: 1 vial (2ml)
Category:	Polyclonal Antibody
Synonyms:	His, His tag, His-tag
Clone:	-
Applications:	WB IF/ICC IP
Conjugation:	-
Reactivity:	Species independent

Antibody Data

Gene ID:	-
Uniprot:	AB_2863794
Host Species:	Rabbit
Purification:	Affinity purification
Observed MW:	35kDa
Calculated MW:	-

Preparation & Storage

Storage: Store at -20°C. Avoid freeze / thaw cycles. Buffer: PBS containing 50% glycerol, preserved with proclin300 or sodium azide (as specified on the Certificate of Analysis), pH 7.3.

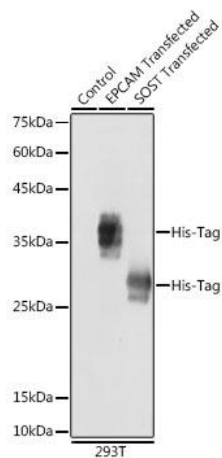
Store Bradford Reagent at Room Temperature for 1 Year.

Positive Sample: 293T

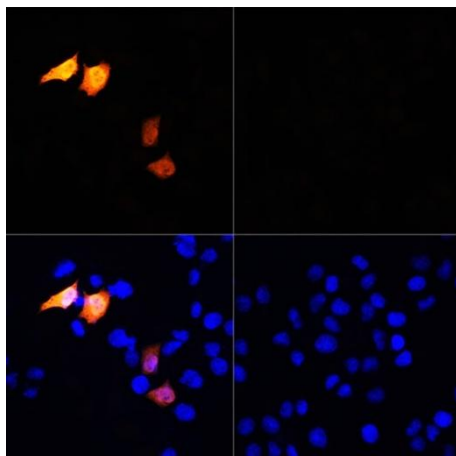
Recommended Dilutions:	WB	1:1000 - 1:5000
	IF/ICC	1:50 - 1:200
	IP	0.5µg-4µg antibody for 200µg-400µg extracts of whole cells

Protein Quantification (Optional): To quantify total protein levels, use the Bradford Reagent included in this kit. Visit <https://www.assaygenie.com/bradford-protein-assay-protocol/> to view the full protocol

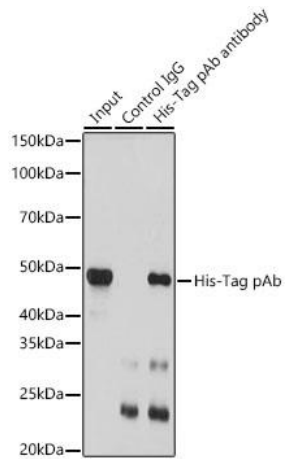
Validation Data



Western blot analysis of extracts of normal 293T cells, 293T transfected with EPCAM Protein and 293T transfected with SOST Protein, using Rabbit anti His-Tag pAb (CABE068) at 1:1000 dilution. Secondary antibody: HRP-conjugated Goat anti-Rabbit IgG (H+L) (CABS014) at 1:10000 dilution. Lysates/proteins: 25µg per lane. Blocking buffer: 3% nonfat dry milk in TBST. Detection: ECL Basic Kit (AbGn00020). Exposure time: 1s.



Immunofluorescence analysis of HeLa cells using Rabbit anti His-Tag pAb (CABE068) at dilution of 1:100. Blue: DAPI for nuclear staining.



Immunoprecipitation analysis of extracts of cells using His-Tag pAb (CABE068). Western blot was performed from the immunoprecipitate using His-Tag pAb (CABE068) at a dilution of 1:3000.