

## Myc-Tag Rabbit mAb

CABE070

### Description

---

This Myc-Tag Rabbit mAb is supplied as a kit for advanced applications. The kit includes Bradford Reagent to quantify total protein concentration for accurate sample normalization (Optional).

### Product Information

---

|                      |  |
|----------------------|--|
| <b>SKU:</b>          | CABE070  |
| <b>Contents:</b>     | 20 $\mu$ L, 100 $\mu$ L<br>Bradford Reagent: 1 vial (2ml)              |
| <b>Category:</b>     | Monoclonal Antibody  |
| <b>Synonyms:</b>     | Myc, Myc tag, Myc-tag, Myc-Tag   |
| <b>Clone:</b>        | ARC5004-12   |
| <b>Applications:</b> | <span>WB</span> <span>IF/ICC</span> <span>IP</span> <span>ELISA</span> |
| <b>Conjugation:</b>  | Unconjugated   |
| <b>Reactivity:</b>   | Species independent  |

### Antibody Data

---

|                       |                          |
|-----------------------|--------------------------|
| <b>Gene ID:</b>       | -                        |
| <b>Uniprot:</b>       | AB_2863795               |
| <b>Host Species:</b>  | Rabbit                   |
| <b>Purification:</b>  | Affinity purification    |
| <b>Observed MW:</b>   | 58 kDa (NLK transfected) |
| <b>Calculated MW:</b> | -                        |

## Preparation & Storage

**Storage:** Store at -20°C. Avoid freeze / thaw cycles. Buffer: PBS containing 50% glycerol and 0.05% BSA, preserved with proclin300 or sodium azide (as specified on the Certificate of Analysis), pH 7.3.

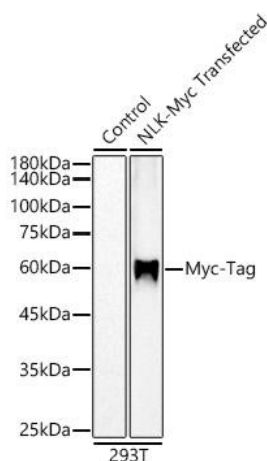
Store Bradford Reagent at Room Temperature for 1 Year.

**Positive Sample:** 293T transfected with NLK-Myc-Tag

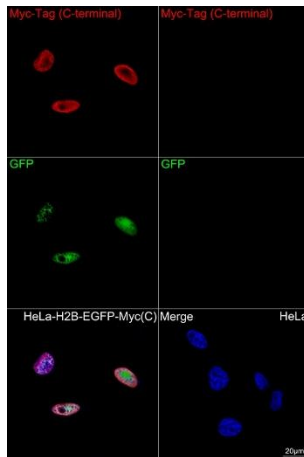
|                               |               |   |
|-------------------------------|---------------|---|
| <b>Recommended Dilutions:</b> | <b>WB</b>     | 1:10000 - 1:120000  |
|                               | <b>IF/ICC</b> | 1:200 - 1:1000  |
|                               | <b>IP</b>     | 0.5µg-4µg antibody for 200µg-400µg extracts of whole cells  |
|                               | <b>ELISA</b>  | Recommended starting concentration is 1 µg/mL. Please optimize the concentration based on your specific assay requirements. |

**Protein Quantification (Optional):** To quantify total protein levels, use the Bradford Reagent included in this kit. Visit <https://www.assaygenie.com/bradford-protein-assay-protocol/> to view the full protocol

## Validation Data



Western blot analysis of lysates from wild type (WT) and 293T cells transfected with using NLK-Myc-Tag Rabbit mAb (CABE070) at 1:120000 dilution. Secondary antibody: HRP-conjugated Goat anti-Rabbit IgG (H+L) (CABS014) at 1:10000 dilution. Lysates/proteins: 25 µg per lane. Blocking buffer: 3% nonfat dry milk in TBST. Detection: ECL Basic Kit (AbGn00020). Exposure time: 10 s.



Confocal imaging of HeLa cells transfected with H2B-EGFP-Myc using Myc-Tag Rabbit mAb (CABE070, dilution 1:200) followed by a further incubation with Cy3-conjugated Goat Anti-Rabbit IgG (H+L) (CABS007, dilution 1:500) (Red). DAPI was used for nuclear staining (Blue). Objective: 100x.