

Phospho-EGFR-Y1068 Monoclonal Antibody

CABP0027

Description

This Phospho-EGFR-Y1068 Monoclonal Antibody is supplied as a kit for advanced applications. The kit includes Bradford Reagent to quantify total protein concentration for accurate sample normalization (Optional).

Product Information

SKU:	CABP0027
Contents:	20 μ L, 100 μ L Bradford Reagent: 1 vial (2ml)
Category:	Monoclonal Antibody
Synonyms:	ERBB, ERRP, HER1, mENA, ERBB1, PIG61, NISBD2, Phospho-EGFR-Y1068
Clone:	ARC0013
Applications:	WB ELISA
Conjugation:	Unconjugated
Reactivity:	Human, Mouse

Antibody Data

Gene ID:	1956
Uniprot:	AB_2863801
Host Species:	Rabbit
Purification:	Affinity purification
Observed MW:	175kDa
Calculated MW:	134kDa

Preparation & Storage

Storage: Store at -20°C. Avoid freeze / thaw cycles. Buffer: PBS containing 50% glycerol and 0.05% BSA, preserved with proclin300 or sodium azide (as specified on the Certificate of Analysis), pH 7.3.

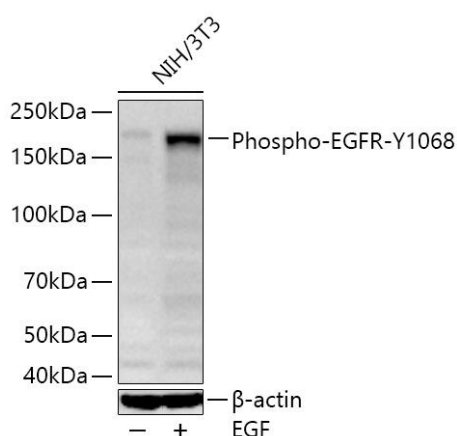
Store Bradford Reagent at Room Temperature for 1 Year.

Positive Sample: A-431 treated with EGF, NIH/3T3 treated with EGF

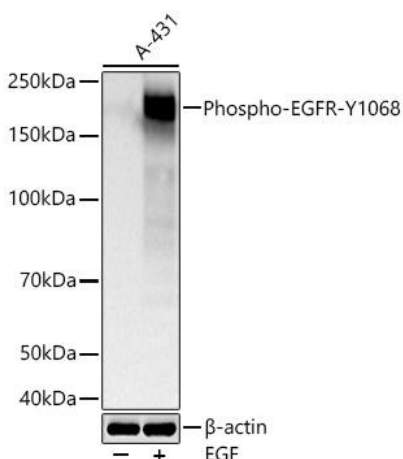
Recommended Dilutions:	WB	1:1000 - 1:6000
	ELISA	Recommended starting concentration is 1 µg/mL. Please optimize the concentration based on your specific assay requirements.

Protein Quantification (Optional): To quantify total protein levels, use the Bradford Reagent included in this kit. Visit <https://www.assaygenie.com/bradford-protein-assay-protocol/> to view the full protocol

Validation Data



Western blot analysis of lysates from NIH/3T3 cells using Phospho-EGFR- Rabbit mAb (CABP0027) at 1:1000 dilution incubated overnight at 4°C. NIH/3T3 cells were treated with EGF (100 ng/mL) at 37°C for 30 minutes after serum-starvation overnight. Secondary antibody: HRP-conjugated Goat anti-Rabbit IgG (H+L) (CABS014) at 1:10000 dilution. Lysates/proteins: 30 µg per lane. Blocking buffer: 3% nonfat dry milk in TBST. Detection: ECL Basic Kit (AbGn00020). Exposure time: 60s.



Western blot analysis of lysates from A-431 cells using Phospho-EGFR- Rabbit mAb (CABP0027) at 1:3000 dilution incubated overnight at 4°C. cells were treated with EGF (100 ng/mL) at 37°C for 30 minutes after serum-starvation overnight. Secondary antibody: HRP-conjugated Goat anti-Rabbit IgG (H+L) (CABS014) at 1:10000 dilution. Lysates/proteins: 30 µg per lane. Blocking buffer: 3% nonfat dry milk in TBST. Detection: ECL Basic Kit (AbGn00020). Exposure time: 20s.