

Phospho-Raf1-S621 Antibody

CABP0087

Description

This Phospho-Raf1-S621 Antibody is supplied as a kit for advanced applications. The kit includes Bradford Reagent to quantify total protein concentration for accurate sample normalization (Optional).

Product Information

SKU:	CABP0087
Contents:	20 μ L, 100 μ L Bradford Reagent: 1 vial (2ml)
Category:	Polyclonal Antibody
Synonyms:	NS5, CRAF, Raf-1, c-Raf, CMD1NN, Phospho-Raf1-S621
Clone:	-
Applications:	WB IP ELISA
Conjugation:	Unconjugated
Reactivity:	Human

Antibody Data

Gene ID:	5894
Uniprot:	AB_2771494
Host Species:	Rabbit
Purification:	Affinity purification
Observed MW:	73kDa
Calculated MW:	73kDa

Preparation & Storage

Storage: Store at -20°C. Avoid freeze / thaw cycles. Buffer: PBS containing 50% glycerol, preserved with proclin300 or sodium azide (as specified on the Certificate of Analysis), pH 7.3.

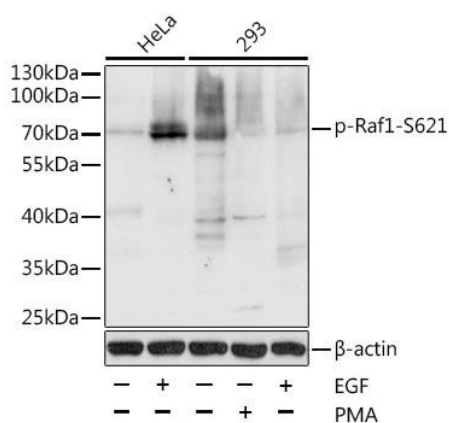
Store Bradford Reagent at Room Temperature for 1 Year.

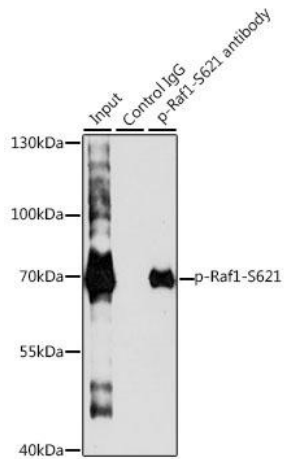
Positive Sample: HeLa treated with EGF, 293T

Recommended Dilutions:	WB	1:500 - 1:2000
	IP	0.5µg-4µg antibody for 200µg-400µg extracts of whole cells
	ELISA	Recommended starting concentration is 1 µg/mL. Please optimize the concentration based on your specific assay requirements.

Protein Quantification (Optional): To quantify total protein levels, use the Bradford Reagent included in this kit. Visit <https://www.assaygenie.com/bradford-protein-assay-protocol/> to view the full protocol

Validation Data





Immunoprecipitation analysis of 200 μ g extracts of HeLa cells, using 3 μ g Phospho-Raf1- pAb (CABP0087). Western blot was performed from the immunoprecipitate using Phospho-Raf1- pAb (CABP0087) at a dilution of 1:1000. HeLa cells were treated with EGF (100 ng/mL) at 37°C for 30 minutes after serum-starvation overnight.