

## Phospho-AKT1-S473 Antibody

CABP0140

### Description

---

This Phospho-AKT1-S473 Antibody is supplied as a kit for advanced applications. The kit includes Bradford Reagent to quantify total protein concentration for accurate sample normalization (Optional).

### Product Information

---

<b>SKU:</b>	CABP0140
<b>Contents:</b>	20 µL, 100 µL Bradford Reagent: 1 vial (2ml)
<b>Category:</b>	Polyclonal Antibody
<b>Synonyms:</b>	AKT, PKB, RAC, PRKBA, PKB-ALPHA, RAC-ALPHA, Phospho-AKT1-S473
<b>Clone:</b>	-
<b>Applications:</b>	<span>WB</span> <span>IHC-P</span> <span>ELISA</span>
<b>Conjugation:</b>	Unconjugated
<b>Reactivity:</b>	Human, Mouse, Rat

### Antibody Data

---

<b>Gene ID:</b>	207
<b>Uniprot:</b>	AB_2770900
<b>Host Species:</b>	Rabbit
<b>Purification:</b>	Affinity purification
<b>Observed MW:</b>	60kDa
<b>Calculated MW:</b>	56kDa

## Preparation & Storage

**Storage:** Store at -20°C. Avoid freeze / thaw cycles. Buffer: PBS with 0.09% Sodium azide, 50% glycerol, pH 7.3.

Store Bradford Reagent at Room Temperature for 1 Year.

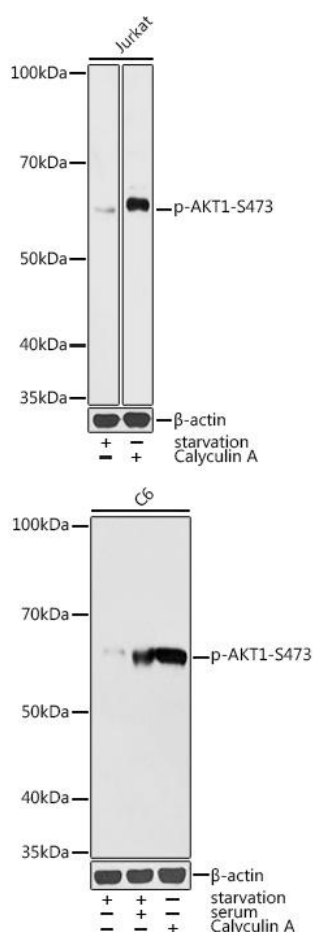
**Positive Sample:** Jurkat treated with Calyculin A, C6 treated with Serum, C6 treated with Calyculin A

**Recommended Dilutions:**

<b>WB</b>	1:500 - 1:1000
<b>IHC-P</b>	1:50 - 1:200
<b>ELISA</b>	Recommended starting concentration is 1 µg/mL. Please optimize the concentration based on your specific assay requirements.

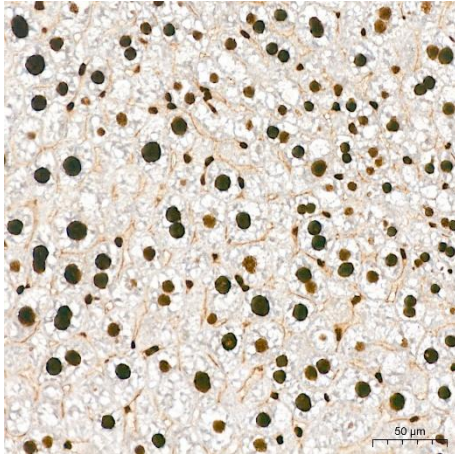
**Protein Quantification (Optional):** To quantify total protein levels, use the Bradford Reagent included in this kit. Visit <https://www.assaygenie.com/bradford-protein-assay-protocol/> to view the full protocol

## Validation Data

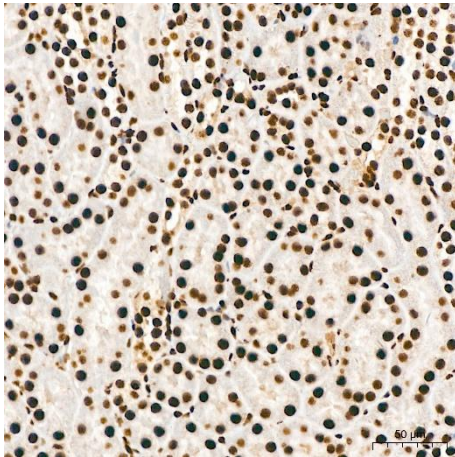


Western blot analysis of lysates from Jurkat cells, using Phospho-- Rabbit pAb (CABP0140) at 1:1000 dilution. Jurkat cells were treated with Serum-starvation overnight at 37°C. Jurkat cells were treated with Calyculin A (100 nM) at 37°C for 30 minutes after serum-starvation overnight. Secondary antibody: HRP-conjugated Goat anti-Rabbit IgG (H+L) (CABS014) at 1:10000 dilution. Lysates/proteins: 25µg per lane. Blocking buffer: 3% nonfat dry milk in TBST. Detection: ECL Basic Kit (AbGn00020). Exposure time: 1s.

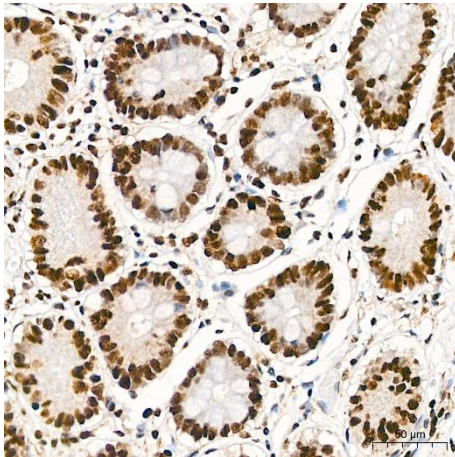
Western blot analysis of lysates from cells, using Phospho-- Rabbit pAb (CABP0140) at 1:1000 dilution. cells were treated with Serum-starvation overnight at 37°C. cells were treated with Calyculin A (100 nM) at 37°C for 30 minutes after serum-starvation overnight. Secondary antibody: HRP-conjugated Goat anti-Rabbit IgG (H+L) (CABS014) at 1:10000 dilution. Lysates/proteins: 25µg per lane. Blocking buffer: 3% nonfat dry milk in TBST. Detection: ECL Enhanced Kit (AbGn00021). Exposure time: 10s.



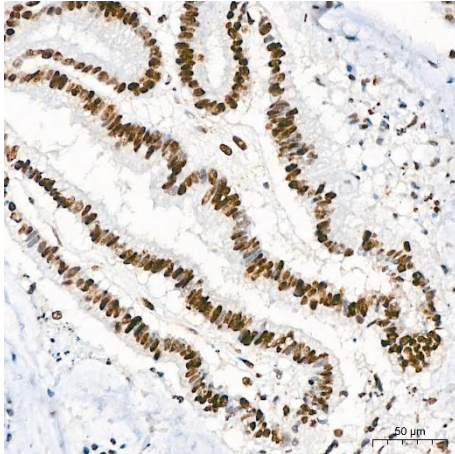
Immunohistochemistry analysis of paraffin-embedded Mouse liver tissue using Phospho-- Rabbit pAb (CABP0140) at a dilution of 1:200 (40x lens). High pressure antigen retrieval performed with 0.01M Citrate Buffer(pH 6.0) prior to IHC staining.



Immunohistochemistry analysis of paraffin-embedded Mouse kidney tissue using Phospho-- Rabbit pAb (CABP0140) at a dilution of 1:200 (40x lens). High pressure antigen retrieval performed with 0.01M Citrate Buffer(pH 6.0) prior to IHC staining.



Immunohistochemistry analysis of paraffin-embedded Human colon tissue using Phospho-- Rabbit pAb (CABP0140) at a dilution of 1:200 (40x lens). High pressure antigen retrieval performed with 0.01M Citrate Buffer(pH 6.0) prior to IHC staining.



Immunohistochemistry analysis of paraffin-embedded Human colon carcinoma tissue using Phospho-- Rabbit pAb (CABP0140) at a dilution of 1:200 (40x lens). High pressure antigen retrieval performed with 0.01M Citrate Buffer(pH 6.0) prior to IHC staining.