

## Phospho-ERK1-T202 Antibody

CABP0234

### Description

---

This Phospho-ERK1-T202 Antibody is supplied as a kit for advanced applications. The kit includes Bradford Reagent to quantify total protein concentration for accurate sample normalization (Optional).

### Product Information

---

<b>SKU:</b>	CABP0234
<b>Contents:</b>	20 µL, 100 µL Bradford Reagent: 1 vial (2ml)
<b>Category:</b>	Polyclonal Antibody
<b>Synonyms:</b>	-
<b>Clone:</b>	-
<b>Applications:</b>	WB IHC-P IF/ICC ELISA
<b>Conjugation:</b>	Unconjugated
<b>Reactivity:</b>	Human, Mouse, Rat

### Antibody Data

---

<b>Gene ID:</b>	5594 5595
<b>Uniprot:</b>	AB_2771313
<b>Host Species:</b>	Rabbit
<b>Purification:</b>	Affinity purification
<b>Observed MW:</b>	42kDa/44kDa
<b>Calculated MW:</b>	38kDa/40kDa/43kDa

## Preparation & Storage

**Storage:** Store at -20°C. Avoid freeze / thaw cycles. Buffer: PBS containing 50% glycerol, preserved with proclin300 or sodium azide (as specified on the Certificate of Analysis), pH 7.3.

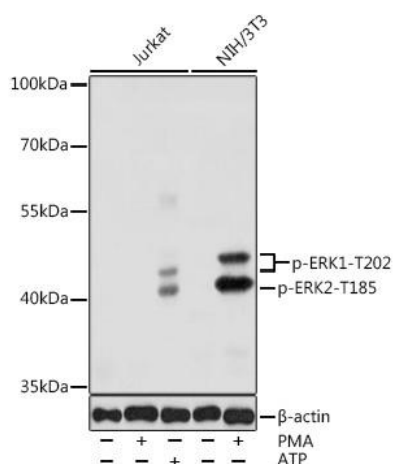
Store Bradford Reagent at Room Temperature for 1 Year.

**Positive Sample:** Jurkat treated with ATP, NIH/3T3 treated with PMA

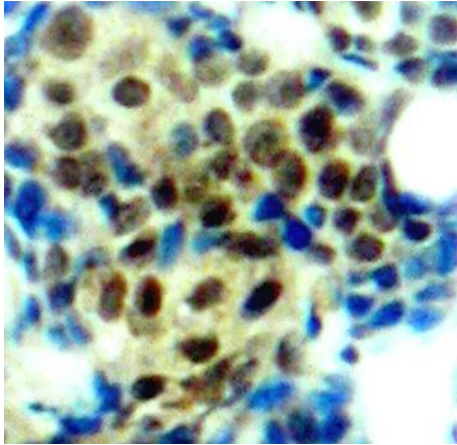
<b>Recommended Dilutions:</b>	<b>WB</b>	1:500 - 1:1000
	<b>IHC-P</b>	1:50 - 1:100
	<b>IF/ICC</b>	1:20 - 1:100
	<b>ELISA</b>	Recommended starting concentration is 1 µg/mL. Please optimize the concentration based on your specific assay requirements.

**Protein Quantification (Optional):** To quantify total protein levels, use the Bradford Reagent included in this kit. Visit <https://www.assaygenie.com/bradford-protein-assay-protocol/> to view the full protocol

## Validation Data



Western blot analysis of various lysates using Phospho- + - Rabbit pAb (CABP0234) at 1:1000 dilution. Jurkat and NIH/3T3 cells were treated with PMA/TPA (200 nM) at 37°C for 30 minutes after serum-starvation overnight. Jurkat cells were treated with ATP (5 mM) at 30°C for 1 hour. Secondary antibody: HRP-conjugated Goat anti-Rabbit IgG (H+L) (CABS014) at 1:10000 dilution. Lysates/proteins: 25µg per lane. Blocking buffer: 3% nonfat dry milk in TBST. Detection: ECL Basic Kit (AbGn00020). Exposure time: 1s.



Immunohistochemistry analysis of paraffin-embedded Human breast carcinoma tissue, using Phospho-- + - Rabbit pAb (CABP0234). Microwave antigen retrieval performed with 0.01M Tris/EDTA Buffer (pH 9.0) prior to IHC staining.