

## Phospho-ERK1-T202/Y204 + ERK2-T185/Y187 Polyclonal Antibody

CABP0472

### Description

---

This Phospho-ERK1-T202/Y204 + ERK2-T185/Y187 Polyclonal Antibody is supplied as a kit for advanced applications. The kit includes Bradford Reagent to quantify total protein concentration for accurate sample normalization (Optional).

### Product Information

---

<b>SKU:</b>	CABP0472
<b>Contents:</b>	20 $\mu$ L, 100 $\mu$ L Bradford Reagent: 1 vial (2ml)
<b>Category:</b>	Polyclonal Antibody
<b>Synonyms:</b>	MAPK1/MAPK3, Phospho-ERK1-T202/Y204 + ERK2-T185/Y187
<b>Clone:</b>	-
<b>Applications:</b>	WB IF/ICC ELISA
<b>Conjugation:</b>	Unconjugated
<b>Reactivity:</b>	Human, Mouse, Rat

### Antibody Data

---

<b>Gene ID:</b>	5594 5595
<b>Uniprot:</b>	AB_2756833
<b>Host Species:</b>	Rabbit
<b>Purification:</b>	Affinity purification
<b>Observed MW:</b>	44kDa/ 42kDa/
<b>Calculated MW:</b>	36kDa/41kDa/38kDa/40kDa/43kDa

## Preparation & Storage

**Storage:** Store at -20°C. Avoid freeze / thaw cycles. Buffer: PBS containing 50% glycerol, preserved with proclin300 or sodium azide (as specified on the Certificate of Analysis), pH 7.3.

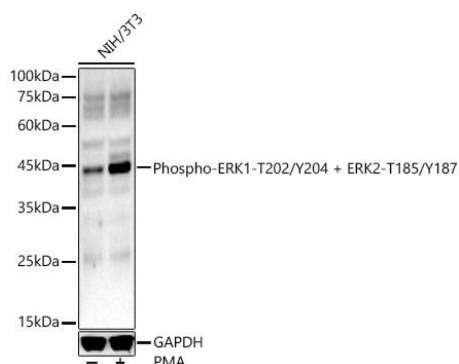
Store Bradford Reagent at Room Temperature for 1 Year.

**Positive Sample:** NIH/3T3 treated with PMA, C6 treated with PMA

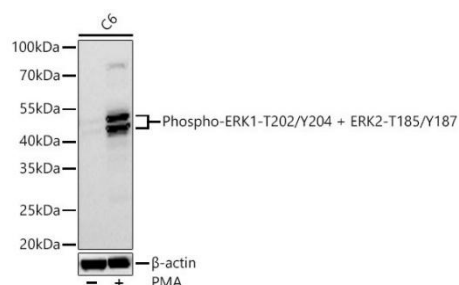
<b>Recommended Dilutions:</b>	<b>WB</b>	1:500 - 1:1000
	<b>IF/ICC</b>	1:50 - 1:200
	<b>ELISA</b>	Recommended starting concentration is 1 µg/mL. Please optimize the concentration based on your specific assay requirements.

**Protein Quantification (Optional):** To quantify total protein levels, use the Bradford Reagent included in this kit. Visit <https://www.assaygenie.com/bradford-protein-assay-protocol/> to view the full protocol

## Validation Data



Western blot analysis of lysates from NIH/3T3 cells using Phospho--/ + -/ Rabbit pAb (CABP0472) at 1:1000 dilution. NIH/3T3 cells were treated with PMA/TPA (200 nM) at 37°C for 30 minutes after serum-starvation overnight. Secondary antibody: HRP-conjugated Goat anti-Rabbit IgG (H+L) (CABS014) at 1:10000 dilution. Lysates/proteins: 25 µg per lane. Blocking buffer: 3% nonfat dry milk in TBST. Detection: ECL Basic Kit (AbGn00020). Exposure time: 180s.



Western blot analysis of lysates from cells using Phospho--/ + -/ Rabbit pAb (CABP0472) at 1:1000 dilution incubated overnight at 4°C. cells were treated with PMA(200 nM) at 37°C for 10 minutes after serum-starvation overnight. Secondary antibody: HRP-conjugated Goat anti-Rabbit IgG (H+L) (CABS014) at 1:10000 dilution. Lysates/proteins: 30 µg per lane. Blocking buffer: 3 % nonfat dry milk in TBST. Detection: ECL Basic Kit (AbGn00020). Exposure time: 45s.