

## Phospho-STAT3-S727 Antibody

CABP0474

### Description

---

This Phospho-STAT3-S727 Antibody is supplied as a kit for advanced applications. The kit includes Bradford Reagent to quantify total protein concentration for accurate sample normalization (Optional).

### Product Information

---

<b>SKU:</b>	CABP0474
<b>Contents:</b>	20 $\mu$ L, 100 $\mu$ L Bradford Reagent: 1 vial (2ml)
<b>Category:</b>	Polyclonal Antibody
<b>Synonyms:</b>	APRF, HIES, ADMIO, ADMIO1, Phospho-STAT3-S727
<b>Clone:</b>	-
<b>Applications:</b>	<span>WB</span> <span>IHC-P</span> <span>IP</span> <span>ELISA</span>
<b>Conjugation:</b>	Unconjugated
<b>Reactivity:</b>	Human, Mouse, Rat

### Antibody Data

---

<b>Gene ID:</b>	6774
<b>Uniprot:</b>	AB_2771567
<b>Host Species:</b>	Rabbit
<b>Purification:</b>	Affinity purification
<b>Observed MW:</b>	86kDa
<b>Calculated MW:</b>	88kDa

## Preparation & Storage

**Storage:** Store at -20°C. Avoid freeze / thaw cycles. Buffer: PBS with 0.09% Sodium azide, 50% glycerol, pH 7.3.

Store Bradford Reagent at Room Temperature for 1 Year.

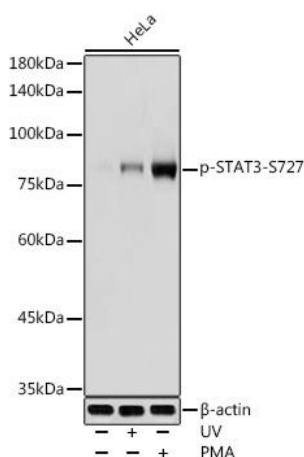
**Positive Sample:** HeLa, HeLa treated with UV or PMA, HepG2, HepG2 treated with PMA, C6 treated with UV or PMA

**Recommended Dilutions:**

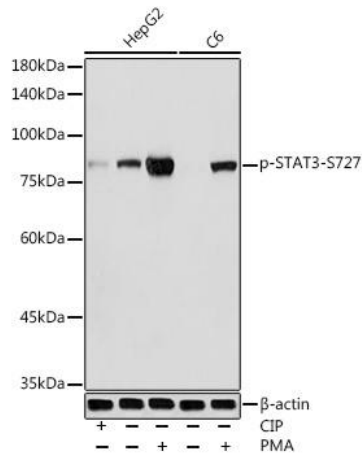
<b>WB</b>	1:500 - 1:5000
<b>IHC-P</b>	1:50 - 1:200
<b>IP</b>	0.5µg-4µg antibody for 200µg-400µg extracts of whole cells
<b>ELISA</b>	Recommended starting concentration is 1 µg/mL. Please optimize the concentration based on your specific assay requirements.

**Protein Quantification (Optional):** To quantify total protein levels, use the Bradford Reagent included in this kit. Visit <https://www.assaygenie.com/bradford-protein-assay-protocol/> to view the full protocol

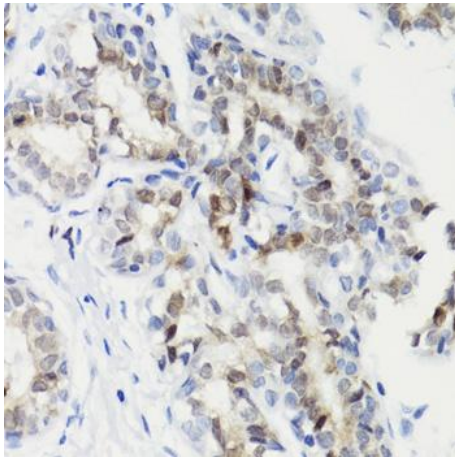
## Validation Data



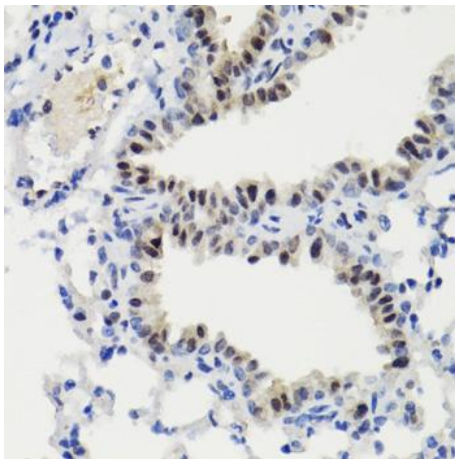
Western blot analysis of lysates from HeLa cells, using Phospho-STAT3- Rabbit pAb (CABP0474) at 1:1000 dilution. HeLa cells were treated with UV at room temperature for 15-30 minutes. HeLa cells were treated with PMA/TPA (200 nM) at 37°C for 15 minutes after serum-starvation overnight. Secondary antibody: HRP-conjugated Goat anti-Rabbit IgG (H+L) (CABS014) at 1:10000 dilution. Lysates/proteins: 25µg per lane. Blocking buffer: 3% nonfat dry milk in TBST. Detection: ECL Basic Kit (AbGn00020). Exposure time: 1s.



Western blot analysis of various lysates using Phospho-STAT3- Rabbit pAb (CABP0474) at 1:1000 dilution. HepG2 cells and cells were treated with PMA/TPA (200 nM) at 37°C for 30 minutes after serum-starvation overnight. HepG2 cells were treated with CIP(20uL/400ul) at 37°C for 1 hour. Secondary antibody: HRP-conjugated Goat anti-Rabbit IgG (H+L) (CABS014) at 1:10000 dilution. Lysates/proteins: 25µg per lane. Blocking buffer: 3% nonfat dry milk in TBST. Detection: ECL Basic Kit (AbGn00020). Exposure time: 1s.



Immunohistochemistry analysis of paraffin-embedded Human breast cancer using Phospho-STAT3- Rabbit pAb (CABP0474) at dilution of 1:100 (40x lens). Microwave antigen retrieval performed with 0.01M Tris/EDTA Buffer (pH 9.0) prior to IHC staining.



Immunohistochemistry analysis of paraffin-embedded Mouse lung using Phospho-STAT3- Rabbit pAb (CABP0474) at dilution of 1:100 (40x lens). Microwave antigen retrieval performed with 0.01M Tris/EDTA Buffer (pH 9.0) prior to IHC staining.