

Phospho-PKC delta-Y311 Antibody

CABP0496

Description

This Phospho-PKC delta-Y311 Antibody is supplied as a kit for advanced applications. The kit includes Bradford Reagent to quantify total protein concentration for accurate sample normalization (Optional).

Product Information

SKU:	CABP0496
Contents:	20 μ L, 100 μ L Bradford Reagent: 1 vial (2ml)
Category:	Polyclonal Antibody
Synonyms:	MAY1, PKCD, ALPS3, CVID9, nPKC-delta, Phospho-PKC delta-Y311
Clone:	-
Applications:	WB ELISA
Conjugation:	Unconjugated
Reactivity:	Human, Mouse

Antibody Data

Gene ID:	5580
Uniprot:	AB_2771424
Host Species:	Rabbit
Purification:	Affinity purification
Observed MW:	78kDa
Calculated MW:	78kDa

Preparation & Storage

Storage: Store at -20°C. Avoid freeze / thaw cycles. Buffer: PBS containing 50% glycerol, preserved with proclin300 or sodium azide (as specified on the Certificate of Analysis), pH 7.3.

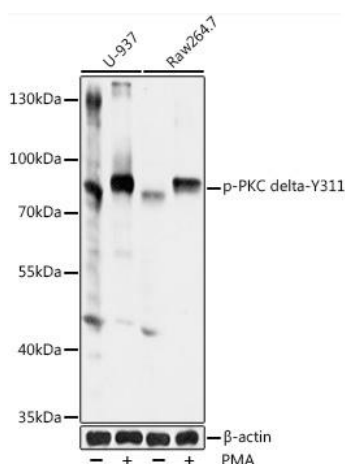
Store Bradford Reagent at Room Temperature for 1 Year.

Positive Sample: U-937 treated with PMA, RAW 264.7 treated with PMA

Recommended Dilutions:	WB	1:500 - 1:2000
	ELISA	Recommended starting concentration is 1 µg/mL. Please optimize the concentration based on your specific assay requirements.

Protein Quantification (Optional): To quantify total protein levels, use the Bradford Reagent included in this kit. Visit <https://www.assaygenie.com/bradford-protein-assay-protocol/> to view the full protocol

Validation Data



Western blot analysis of lysates from U-937 and Raw264.7 cells, using Phospho-PKC delta- Rabbit pAb (CABP0496) at 1:1000 dilution. U-937 cells were treated with PMA/TPA (200nM) for 30 minutes. RAW 264.7 cells were treated with PMA (200 nM) for 30 minutes. Secondary antibody: HRP-conjugated Goat anti-Rabbit IgG (H+L) (CABS014) at 1:10000 dilution. Lysates/proteins: 25µg per lane. Blocking buffer: 3% BSA. Detection: ECL Basic Kit (AbGn00020). Exposure time: 60s.