

Phospho-S6 Ribosomal Protein (RPS6)-S235/236 Antibody

CABP0538

Description

This Phospho-S6 Ribosomal Protein (RPS6)-S235/236 Antibody is supplied as a kit for advanced applications. The kit includes Bradford Reagent to quantify total protein concentration for accurate sample normalization (Optional).

Product Information

SKU:	CABP0538
Contents:	20 μ L, 100 μ L Bradford Reagent: 1 vial (2ml)
Category:	Polyclonal Antibody
Synonyms:	S6, eS6, Phospho-S6 Ribosomal Protein (RPS6)-S235/236
Clone:	-
Applications:	WB ELISA
Conjugation:	Unconjugated
Reactivity:	Human, Mouse, Rat

Antibody Data

Gene ID:	6194
Uniprot:	AB_2771522
Host Species:	Rabbit
Purification:	Affinity purification
Observed MW:	32kDa
Calculated MW:	29kDa

Preparation & Storage

Storage: Store at -20°C. Avoid freeze / thaw cycles. Buffer: PBS containing 50% glycerol, preserved with proclin300 or sodium azide (as specified on the Certificate of Analysis), pH 7.3.

Store Bradford Reagent at Room Temperature for 1 Year.

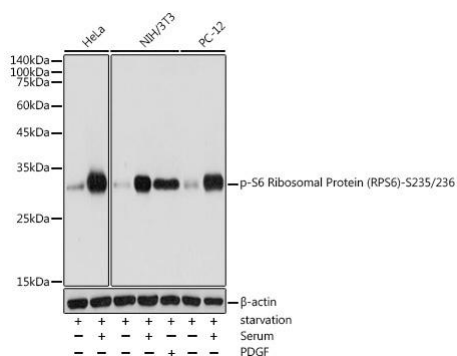
Positive Sample: HeLa treated with 10% FBS, NIH/3T3 treated with 10% FBS, NIH/3T3 treated with PDGF, PC-12 treated with 10% FBS

Recommended Dilutions:

WB	1:500 - 1:1000
ELISA	Recommended starting concentration is 1 µg/mL. Please optimize the concentration based on your specific assay requirements.

Protein Quantification (Optional): To quantify total protein levels, use the Bradford Reagent included in this kit. Visit <https://www.assaygenie.com/bradford-protein-assay-protocol/> to view the full protocol

Validation Data



Western blot analysis of various lysates using Phospho-Ribosomal Protein -/236 Rabbit pAb (CABP0538) at 1:1000 dilution. HeLa cells NIH/3T3 cells and PC-12 cells were treated with 10% FBS at 37°C for 30 minutes after serum-starvation overnight. NIH/3T3 cells were treated with PDGF (100 ng/ml) at 37°C for 30 minutes after serum-starvation overnight. Secondary antibody: HRP-conjugated Goat anti-Rabbit IgG (H+L) (CABS014) at 1:10000 dilution. Lysates/proteins: 25µg per lane. Blocking buffer: 3% nonfat dry milk in TBST. Detection: ECL Basic Kit. Exposure time: 1s.