

Phospho-PKC (pan) (gamma)-T514 Antibody

CABP0613

Description

This Phospho-PKC (pan) (gamma)-T514 Antibody is supplied as a kit for advanced applications. The kit includes Bradford Reagent to quantify total protein concentration for accurate sample normalization (Optional).

Product Information

SKU:	CABP0613		
Contents:	20 μL, 100 μL Bradford Reagent: 1 vial (2ml)		
Category:	Polyclonal Antibody		
Synonyms:	PRKCA/PRKCB/PRKCD/PRKCE/PRKCG/PRKCH/PRKCQ, (pan) (gamma)-T514	Phospho-PKC	
Clone:	-		
Applications:	<div>WBELISA</div>		
Conjugation:	Unconjugated		
Reactivity:	Human, Mouse, Rat		

Antibody Data

Gene ID:	5578 5579 5580 5581 5582 5583 5588
Uniprot:	AB_2771418
Host Species:	Rabbit
Purification:	Affinity purification
Observed MW:	80kDa
Calculated MW:	59-67kDa/74-83kDa

Preparation & Storage

Storage: Store at -20°C. Avoid freeze / thaw cycles. Buffer: PBS containing 50% glycerol, preserved with proclin300 or sodium azide (as specified on the Certificate of Analysis), pH 7.3.

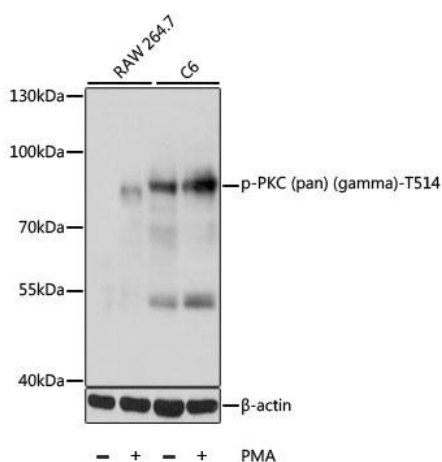
Store Bradford Reagent at Room Temperature for 1 Year.

Positive Sample: RAW264.7 treated with PMA, C6 treated with PMA

Recommended Dilutions:	WB	1:500 - 1:2000
	ELISA	Recommended starting concentration is 1 µg/mL. Please optimize the concentration based on your specific assay requirements.

Protein Quantification (Optional): To quantify total protein levels, use the Bradford Reagent included in this kit. Visit <https://www.assaygenie.com/bradford-protein-assay-protocol/> to view the full protocol

Validation Data



Western blot analysis of various lysates using Phospho-PKC (pan) (gamma)- Rabbit pAb (CABP0613) at 1:1000 dilution. RAW 264.7 cells were treated with PMA (200 nM) for 30 minutes. cells were treated with PMA/TPA (200nM) for 30 minutes after serum-starvation overnight. Secondary antibody: HRP-conjugated Goat anti-Rabbit IgG (H+L) (CABS014) at 1:10000 dilution. Lysates/proteins: 25µg per lane. Blocking buffer: 3% BSA. Detection: ECL Basic Kit (AbGn00020). Exposure time: 10s.