

## Phospho-STAT3-Y705 Monoclonal Antibody

CABP0705

### Description

---

This Phospho-STAT3-Y705 Monoclonal Antibody is supplied as a kit for advanced applications. The kit includes Bradford Reagent to quantify total protein concentration for accurate sample normalization (Optional).

### Product Information

---

<b>SKU:</b>	CABP0705
<b>Contents:</b>	20 $\mu$ L, 100 $\mu$ L Bradford Reagent: 1 vial (2ml)
<b>Category:</b>	Monoclonal Antibody
<b>Synonyms:</b>	APRF, HIES, ADMIO, ADMIO1, Phospho-STAT3-Y705
<b>Clone:</b>	ARC50831
<b>Applications:</b>	<span>WB</span> <span>IHC-P</span> <span>ELISA</span> <span>IF-P</span>
<b>Conjugation:</b>	Unconjugated
<b>Reactivity:</b>	Human, Mouse, Rat

### Antibody Data

---

<b>Gene ID:</b>	6774
<b>Uniprot:</b>	AB_2863810
<b>Host Species:</b>	Rabbit
<b>Purification:</b>	Affinity purification
<b>Observed MW:</b>	79kDa/88kDa
<b>Calculated MW:</b>	88kDa

## Preparation & Storage

**Storage:** Store at -20°C. Avoid freeze / thaw cycles. Buffer: PBS containing 50% glycerol and 0.05% BSA, preserved with proclin300 or sodium azide (as specified on the Certificate of Analysis), pH 7.3.

Store Bradford Reagent at Room Temperature for 1 Year.

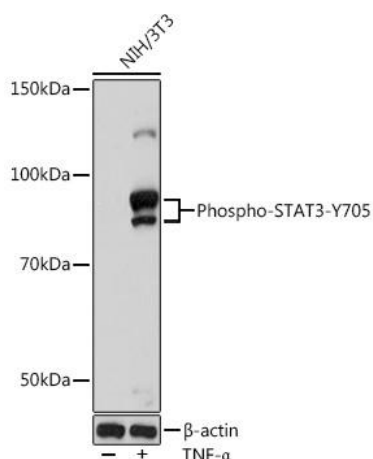
**Positive Sample:** NIH/3T3 treated with TNF- $\alpha$

**Recommended Dilutions:**

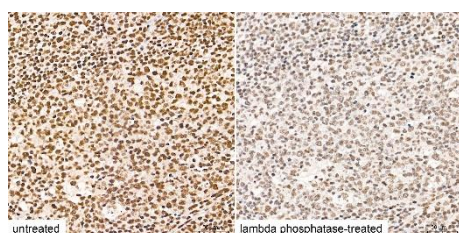
<b>WB</b>	1:500 - 1:1000
<b>IF-P</b>	1:50 - 1:200
<b>IHC-P</b>	1:50 - 1:200
<b>ELISA</b>	Recommended starting concentration is 1 $\mu$ g/mL. Please optimize the concentration based on your specific assay requirements.

**Protein Quantification (Optional):** To quantify total protein levels, use the Bradford Reagent included in this kit. Visit <https://www.assaygenie.com/bradford-protein-assay-protocol/> to view the full protocol

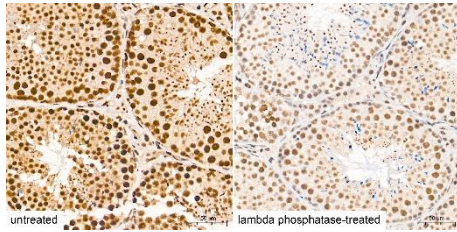
## Validation Data



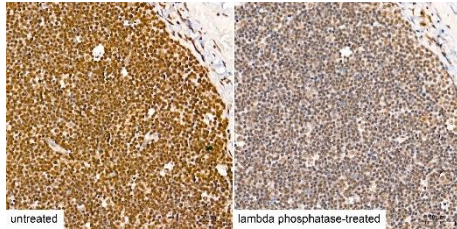
Western blot analysis of lysates from NIH/3T3 cells, using Phospho-STAT3- Rabbit mAb (CABP0705) at 1:1000 dilution. NIH/3T3 cells were treated by TNF- $\alpha$  (20 ng/mL) at 37°C for 30 minutes. Secondary antibody: HRP-conjugated Goat anti-Rabbit IgG (H+L) (CABS014) at 1:10000 dilution. Lysates/proteins: 25 $\mu$ g per lane. Blocking buffer: 3% nonfat dry milk in TBST. Detection: ECL Enhanced Kit (AbGn00021). Exposure time: 180s.



Immunohistochemistry analysis of paraffin-embedded Human tonsil tissue using Phospho-STAT3- Rabbit mAb (CABP0705) at a dilution of 1:200 (40x lens). High pressure antigen retrieval performed with 0.01M Citrate Buffer (pH 6.0) prior to IHC staining.



Immunohistochemistry analysis of paraffin-embedded Mouse testis tissue using Phospho-STAT3- Rabbit mAb (CABP0705) at a dilution of 1:200 (40x lens). High pressure antigen retrieval performed with 0.01M Citrate Buffer (pH 6.0) prior to IHC staining.



Immunohistochemistry analysis of paraffin-embedded Rat thymus tissue using Phospho-STAT3- Rabbit mAb (CABP0705) at a dilution of 1:200 (40x lens). High pressure antigen retrieval performed with 0.01M Citrate Buffer (pH 6.0) prior to IHC staining.