

Phospho-Smad3-S423/S425 Monoclonal Antibody

CABP0727

Description

This Phospho-Smad3-S423/S425 Monoclonal Antibody is supplied as a kit for advanced applications. The kit includes Bradford Reagent to quantify total protein concentration for accurate sample normalization (Optional).

Product Information

SKU:	CABP0727
Contents:	20 μ L, 100 μ L Bradford Reagent: 1 vial (2ml)
Category:	Monoclonal Antibody
Synonyms:	LDS3, mad3, LDS1C, MADH3, JV15-2, hMAD-3, hSMAD3, HSPC193, HsT17436, Phospho-Smad3-S423/S425
Clone:	ARC0170
Applications:	WB IHC-P ELISA
Conjugation:	Unconjugated
Reactivity:	Human, Mouse, Rat

Antibody Data

Gene ID:	4088
Uniprot:	AB_2863813
Host Species:	Rabbit
Purification:	Affinity purification
Observed MW:	52 kDa
Calculated MW:	48 kDa

Preparation & Storage

Storage: Store at -20°C. Avoid freeze / thaw cycles. Buffer: PBS with 0.09% sodium azide, 0.05% BSA, 50% glycerol, pH 7.3.

Store Bradford Reagent at Room Temperature for 1 Year.

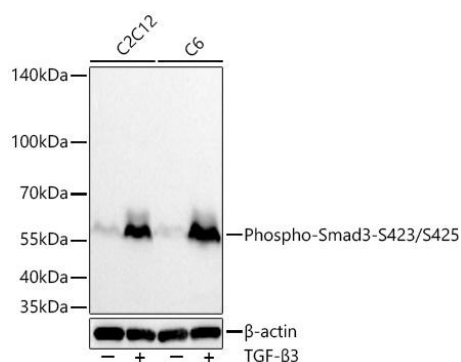
Positive Sample: HeLa treated with TGF- β , C2C12 treated with TGF- β 3, C6 treated with TGF- β 3

Recommended Dilutions:

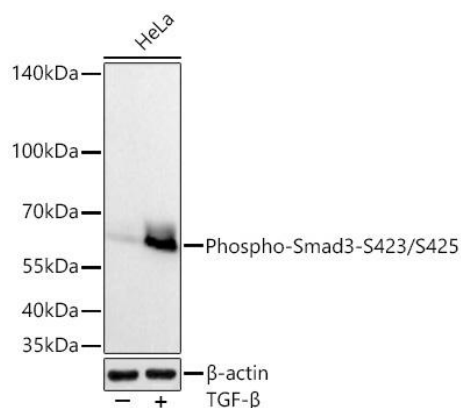
WB	1:1000 - 1:3000
IHC-P	1:50 - 1:200
ELISA	Recommended starting concentration is 1 μ g/mL. Please optimize the concentration based on your specific assay requirements.

Protein Quantification (Optional): To quantify total protein levels, use the Bradford Reagent included in this kit. Visit <https://www.assaygenie.com/bradford-protein-assay-protocol/> to view the full protocol

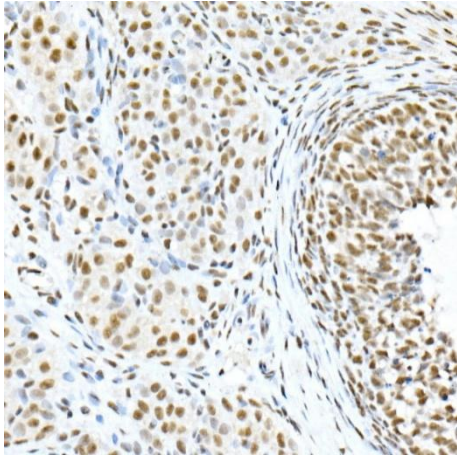
Validation Data



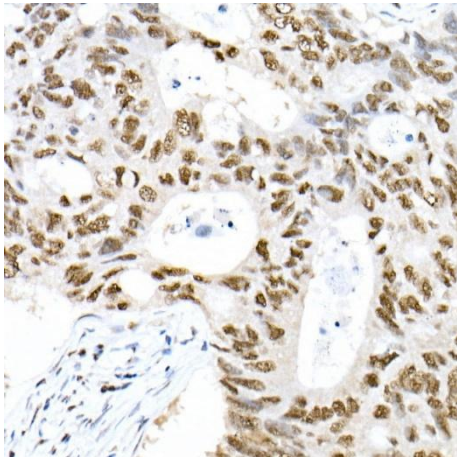
Western blot analysis of various lysates using Phospho-Smad3-/- Rabbit mAb (CABP0727) at 1:1000 dilution incubated overnight at 4°C. C2C12 cells and cells were treated with TGF- β 3 (50 ng/mL) at 37°C for 30 minutes. Secondary antibody: HRP-conjugated Goat anti-Rabbit IgG (H+L) (CABS014) at 1:10000 dilution. Lysates/proteins: 25 μ g per lane. Blocking buffer: 3% nonfat dry milk in TBST. Detection: ECL Basic Kit (AbGn00020). Exposure time: 20 s.



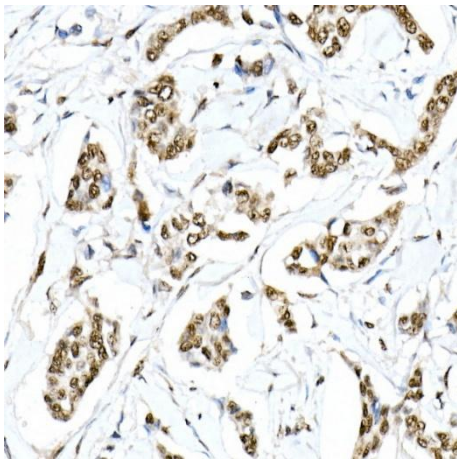
Western blot analysis of lysates from HeLa cells using Phospho-Smad3-/- Rabbit mAb (CABP0727) at 1:1000 dilution incubated overnight at 4°C. HeLa cells were treated with TGF- β (50 ng/mL) at 37°C for 30 minutes. Secondary antibody: HRP-conjugated Goat anti-Rabbit IgG (H+L) (CABS014) at 1:10000 dilution. Lysates/proteins: 25 μ g per lane. Blocking buffer: 3% nonfat dry milk in TBST. Detection: ECL Basic Kit (AbGn00020). Exposure time: 45 s.



Immunohistochemistry analysis of paraffin-embedded Rat ovary tissue using Phospho-Smad3- / Rabbit mAb (CABP0727) at dilution of 1:200 (40x lens). High pressure antigen retrieval performed with 0.01M Citrate buffer (pH 6.0) prior to IHC staining.



Immunohistochemistry analysis of paraffin-embedded Human colon carcinoma tissue using Phospho-Smad3- / Rabbit mAb (CABP0727) at dilution of 1:200 (40x lens). High pressure antigen retrieval performed with 0.01M Citrate buffer (pH 6.0) prior to IHC staining.



Immunohistochemistry analysis of paraffin-embedded Human breast cancer tissue using Phospho-Smad3- / Rabbit mAb (CABP0727) at dilution of 1:200 (40x lens). High pressure antigen retrieval performed with 0.01M Citrate buffer (pH 6.0) prior to IHC staining.