

Phospho-Lamin A/C-S22 Antibody

CABP0777

Description

This Phospho-Lamin A/C-S22 Antibody is supplied as a kit for advanced applications. The kit includes Bradford Reagent to quantify total protein concentration for accurate sample normalization (Optional).

Product Information

SKU:	CABP0777
Contents:	20 µL, 100 µL Bradford Reagent: 1 vial (2ml)
Category:	Polyclonal Antibody
Synonyms:	FPL, IDC, LFP, CDDC, EMD2, FPLD, HGPS, LDP1, LMN1, LMNC, MADA, PRO1, CDCD1, CMD1A, FPLD2, LMNL1, CMT2B1, LGMD1B, Phospho-Lamin A/C-S22
Clone:	-
Applications:	WB IP ELISA
Conjugation:	Unconjugated
Reactivity:	Human, Rat

Antibody Data

Gene ID:	4000
Uniprot:	AB_2771274
Host Species:	Rabbit
Purification:	Affinity purification
Observed MW:	69kDa, 78kDa
Calculated MW:	74kDa

Preparation & Storage

Storage: Store at -20°C. Avoid freeze / thaw cycles. Buffer: PBS with 0.01% thimerosal, 50% glycerol, pH 7.3.

Store Bradford Reagent at Room Temperature for 1 Year.

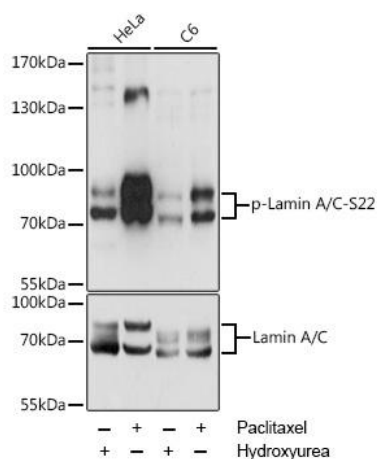
Positive Sample: HeLa treated with Paclitaxel, C6 treated with Paclitaxel

Recommended Dilutions:

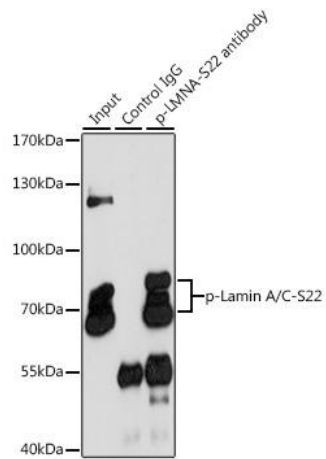
WB	1:500 - 1:2000
IP	0.5µg-4µg antibody for 200µg-400µg extracts of whole cells
ELISA	Recommended starting concentration is 1 µg/mL. Please optimize the concentration based on your specific assay requirements.

Protein Quantification (Optional): To quantify total protein levels, use the Bradford Reagent included in this kit. Visit <https://www.assaygenie.com/bradford-protein-assay-protocol/> to view the full protocol

Validation Data



Western blot analysis of various lysates using Phospho-Lamin A/C- Rabbit pAb (CABP0777) at 1:2000 dilution or Lamin A antibody (CAB0249). HeLa cells were treated with Hydroxyurea (4 mM) at 37°C for 20 hours or treated with Paclitaxel (100 nM/mL) at 37°C for 20 hours. cells were treated with Hydroxyurea (4 mM) at 37°C for 20 hours or treated with Paclitaxel (100 nM) at 37°C for 20 hours. Secondary antibody: HRP-conjugated Goat anti-Rabbit IgG (H+L) (CABS014) at 1:10000 dilution. Lysates/proteins: 25µg per lane. Blocking buffer: 3% BSA. Detection: ECL Enhanced Kit. Exposure time: 1s.



Immunoprecipitation analysis of 200 µg extracts of HeLa cells, using 3 µg Phospho-Lamin A/C- pAb (CABP0777). Western blot was performed from the immunoprecipitate using Phospho-Lamin A/C- pAb (CABP0777) at a dilution of 1:1000. HeLa cells were treated with Paclitaxel (100 nM/mL) at 37°C for 20 hours.