

Phospho-PPP1CA-T320 Antibody

CABP0786

Description

This Phospho-PPP1CA-T320 Antibody is supplied as a kit for advanced applications. The kit includes Bradford Reagent to quantify total protein concentration for accurate sample normalization (Optional).

Product Information

SKU:	CABP0786
Contents:	20 μ L, 100 μ L Bradford Reagent: 1 vial (2ml)
Category:	Polyclonal Antibody
Synonyms:	PP1A, PP-1A, PPP1A, PP1alpha, Phospho-PPP1CA-T320
Clone:	-
Applications:	WB IHC-P ELISA
Conjugation:	Unconjugated
Reactivity:	Human, Mouse, Rat

Antibody Data

Gene ID:	5499
Uniprot:	AB_2771445
Host Species:	Rabbit
Purification:	Affinity purification
Observed MW:	38kDa
Calculated MW:	38kDa

Preparation & Storage

Storage: Store at -20°C. Avoid freeze / thaw cycles. Buffer: PBS containing 50% glycerol, preserved with proclin300 or sodium azide (as specified on the Certificate of Analysis), pH 7.3.

Store Bradford Reagent at Room Temperature for 1 Year.

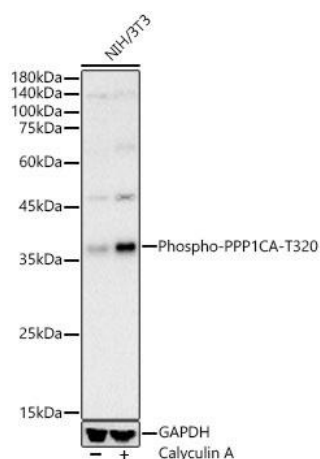
Positive Sample: C6 treated with Calyculin A, NIH/3T3 treated with Calyculin A, HeLa treated with FBS

Recommended Dilutions:

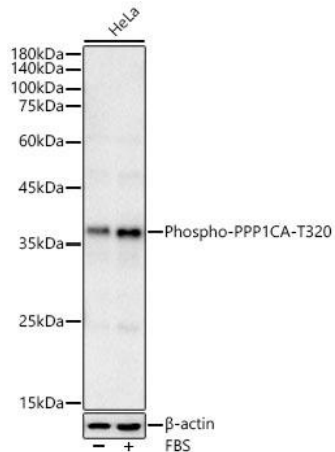
WB	1:500 - 1:2000
IHC-P	1:50 - 1:100
ELISA	Recommended starting concentration is 1 µg/mL. Please optimize the concentration based on your specific assay requirements.

Protein Quantification (Optional): To quantify total protein levels, use the Bradford Reagent included in this kit. Visit <https://www.assaygenie.com/bradford-protein-assay-protocol/> to view the full protocol

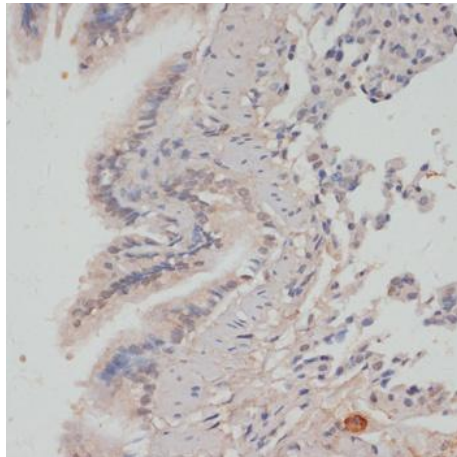
Validation Data



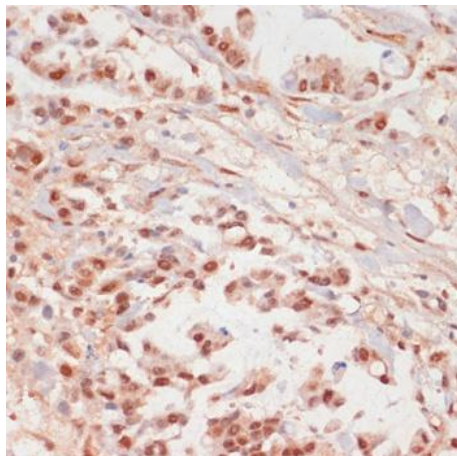
Western blot analysis of lysates from NIH/3T3 cells using Phospho-PPP1CA- Rabbit pAb (CABP0786) at 1:500 dilution. NIH/3T3 cells were treated with Calyculin A (100 nM) at 37°C for 30 minutes after serum-starvation overnight. Secondary antibody: HRP-conjugated Goat anti-Rabbit IgG (H+L) (CABS014) at 1:10000 dilution. Lysates/proteins: 25 µg per lane. Blocking buffer: 3% nonfat dry milk in TBST. Detection: ECL Basic Kit (AbGn00020). Exposure time: 60s.



Western blot analysis of lysates from HeLa cells using Phospho-PPP1CA- Rabbit pAb (CABP0786) at 1:500 dilution. HeLa cells were treated with 10% FBS at 37°C for 30 minutes after serum-starvation overnight. Secondary antibody: HRP-conjugated Goat anti-Rabbit IgG (H+L) (CABS014) at 1:10000 dilution. Lysates/proteins: 25 µg per lane. Blocking buffer: 3% nonfat dry milk in TBST. Detection: ECL Enhanced Kit (AbGn00021). Exposure time: 30s.



Immunohistochemistry analysis of paraffin-embedded Rat lung using Phospho-PPP1CA- Rabbit pAb (CABP0786) at dilution of 1:100 (40x lens). Microwave antigen retrieval performed with 0.01M Tris/EDTA Buffer (pH 9.0) prior to IHC staining.



Immunohistochemistry analysis of paraffin-embedded Human gastric cancer using Phospho-PPP1CA- Rabbit pAb (CABP0786) at dilution of 1:100 (40x lens). Microwave antigen retrieval performed with 0.01M Tris/EDTA Buffer (pH 9.0) prior to IHC staining.