

Phospho-PEA15-S104 Antibody

CABP0788

Description

This Phospho-PEA15-S104 Antibody is supplied as a kit for advanced applications. The kit includes Bradford Reagent to quantify total protein concentration for accurate sample normalization (Optional).

Product Information

SKU:	CABP0788
Contents:	20 μ L, 100 μ L Bradford Reagent: 1 vial (2ml)
Category:	Polyclonal Antibody
Synonyms:	PED, MAT1, HMAT1, MAT1H, PEA-15, HUMMAT1H, PED-PEA15, PED/PEA15, Phospho-PEA15-S104
Clone:	-
Applications:	WB ELISA
Conjugation:	Unconjugated
Reactivity:	Human, Mouse, Rat

Antibody Data

Gene ID:	8682
Uniprot:	AB_2771411
Host Species:	Rabbit
Purification:	Affinity purification
Observed MW:	13kDa/15kDa
Calculated MW:	15kDa

Preparation & Storage

Storage: Store at -20°C. Avoid freeze / thaw cycles. Buffer: PBS with 0.01% thimerosal, 50% glycerol, pH 7.3.

Store Bradford Reagent at Room Temperature for 1 Year.

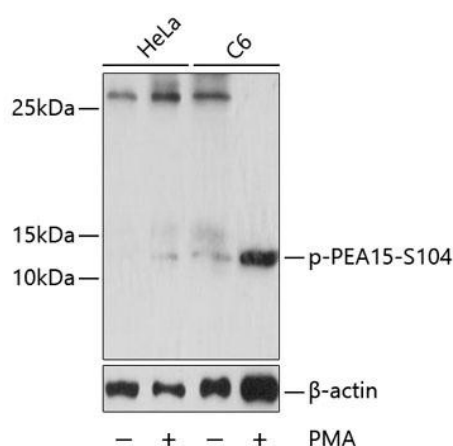
Positive Sample: HeLa treated with PMA, C6 treated with PMA

Recommended Dilutions:

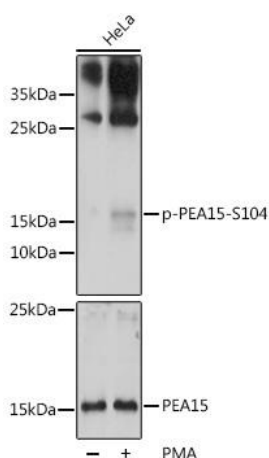
WB	1:500 - 1:2000
ELISA	Recommended starting concentration is 1 µg/mL. Please optimize the concentration based on your specific assay requirements.

Protein Quantification (Optional): To quantify total protein levels, use the Bradford Reagent included in this kit. Visit <https://www.assaygenie.com/bradford-protein-assay-protocol/> to view the full protocol

Validation Data



Western blot analysis of lysates from HeLa and cells, using Phospho-- Rabbit pAb (CABP0788) at 1:2000 dilution. HeLa cells were treated with PMA/TPA (200nM) for 15 minutes after serum-starvation overnight. cells were treated with PMA/TPA (200nM) for 30 minutes after serum-starvation overnight. Secondary antibody: HRP-conjugated Goat anti-Rabbit IgG (H+L) (CABS014) at 1:10000 dilution. Lysates/proteins: 25µg per lane. Blocking buffer: 3% BSA. Detection: ECL Basic Kit (AbGn00020). Exposure time: 10s.



Western blot analysis of lysates from HeLa cells, using Phospho-- Rabbit pAb (CAB9956). HeLa cells were treated with PMA/TPA (200nM) for 15 minutes after serum-starvation overnight. Secondary antibody: HRP-conjugated Goat anti-Rabbit IgG (H+L) (CABS014) at 1:10000 dilution. Lysates/proteins: 25µg per lane. Blocking buffer: 3% BSA. Detection: ECL Basic Kit (AbGn00020). Exposure time: 90s.