

Phospho-AKT1S1/PRAS40-T246 Antibody

CABP0793

Description

This Phospho-AKT1S1/PRAS40-T246 Antibody is supplied as a kit for advanced applications. The kit includes Bradford Reagent to quantify total protein concentration for accurate sample normalization (Optional).

Product Information

SKU:	CABP0793
Contents:	20 μ L, 100 μ L Bradford Reagent: 1 vial (2ml)
Category:	Polyclonal Antibody
Synonyms:	Lobe, PRAS40, Phospho-AKT1S1/PRAS40-T246
Clone:	-
Applications:	WB ELISA
Conjugation:	Unconjugated
Reactivity:	Human

Antibody Data

Gene ID:	84335
Uniprot:	AB_2770905
Host Species:	Rabbit
Purification:	Affinity purification
Observed MW:	40kDa
Calculated MW:	27kDa

Preparation & Storage

Storage: Store at -20°C. Avoid freeze / thaw cycles. Buffer: PBS containing 50% glycerol, preserved with proclin300 or sodium azide (as specified on the Certificate of Analysis), pH 7.3.

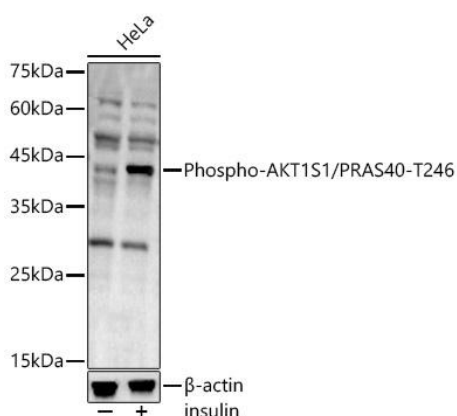
Store Bradford Reagent at Room Temperature for 1 Year.

Positive Sample: HeLa treated with Insulin

Recommended Dilutions:	WB	1:500 - 1:2000
	ELISA	Recommended starting concentration is 1 µg/mL. Please optimize the concentration based on your specific assay requirements.

Protein Quantification (Optional): To quantify total protein levels, use the Bradford Reagent included in this kit. Visit <https://www.assaygenie.com/bradford-protein-assay-protocol/> to view the full protocol

Validation Data



Western blot analysis of lysates from HeLa cells, using Phospho-AKT1S1/PRAS40- Rabbit pAb (CABP0793) at 1:400 dilution. HeLa cells were treated with Insulin (100 nM) at 37°C for 5 minutes after serum-starvation overnight. Secondary antibody: HRP-conjugated Goat anti-Rabbit IgG (H+L) (CABS014) at 1:10000 dilution. Lysates/proteins: 25µg per lane. Blocking buffer: 3% nonfat dry milk in TBST. Detection: ECL Enhanced Kit (AbGn00021). Exposure time: 45s.